

CT

NEW ZEALAND SPECIFICATIONS | CT200h



EXTERIOR COLOURS

The CT200h is available in an array of exterior colours, including conventional pairings of similar hues as well as bold combinations, so you can enjoy creating your very own Lexus.



Sonic Quartz | 085 | N/A F Sport



Titanium | 1J7



Basalt Mica | 1H9



Graphite Black | 223



Caliente | 3T2



Sparkling Meteor | 8X9 | Metallic | N/A F Sport



White Nova | 083 | Glass Flake | F Sport only



Lava | 4W7 | Crystal Shine | F Sport only



Cobalt | 8X1 | F Sport only



Basalt Mica / Burgundy | 2QA | N/A F Sport



Titanium / Sonic Quartz | 2QB | N/A F Sport



Titanium / Graphite Black | 2PZ | N/A F Sport



Onyx / White Nova | 2LJ | F Sport only



Onyx / Titanium | 2MN | F Sport only



Onyx / Basalt Mica | 2LL | F Sport only



Onyx / Caliente | 2LN | F Sport only



Onyx / Lava | 2QE | F Sport only



Onyx / Cobalt | 2QF | F Sport only

INTERIOR TRIM

The CT200h is available in an array of interior trims, including conventional pairings of similar hues as well as bold combinations, so you can enjoy creating your very own Lexus.



CT200h F Sport White / Black Smooth Leather Accented



CT200h Base Grade Fabric



CT200h Base Grade OPTIONAL Smooth Leather Accented

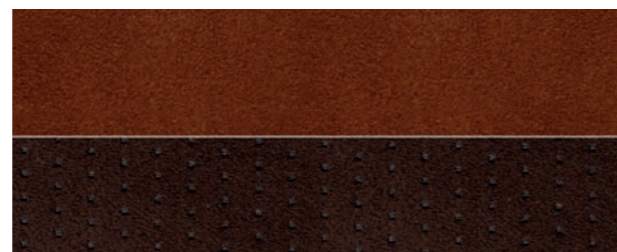


CT200h F Sport Smooth Leather Accented

CT200h Base Grade Fabric



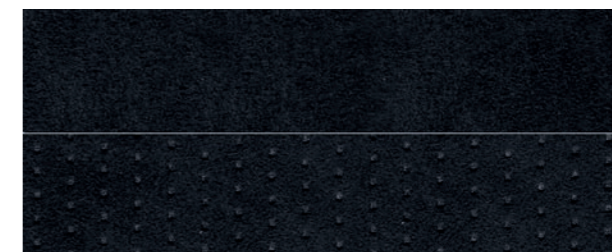
Chateau | 02



Dark Camel / Noble Brown | 45



Black / Red | 36



Black | 22



Black Ornementation

CT200h Base Grade OPTIONAL Smooth Leather Accented



Chateau / Fromage | 02



Ochre / Light Ochre | 43



Sunflare Brown / Noble Brown | 44

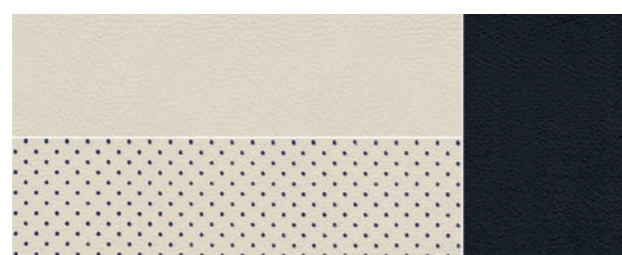


Black | 22



Black Ornementation

CT200h F Sport Smooth Leather Accented



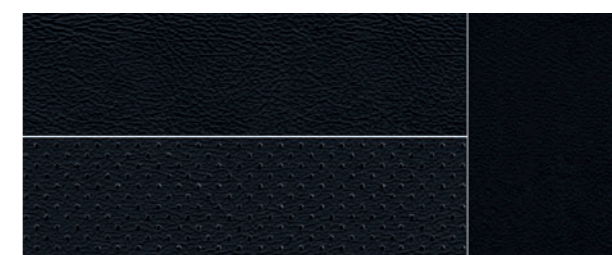
White / Black | 03



Chateau / Black | 04



Flare Red / Black | 35



Black | 23



Naguri-style Aluminium Ornementation

MAIN FEATURES CT200h

SEATS

Base model fabric seats with manual adjustment (6-way driver's seat, 4-way front passenger's seat)

Base model Leather accented seat option & F Sport (8-way power driver's seat, power lumbar support; 4-way power front passenger's seat; front seat heaters), 3 position driver's seat memory

Rear seat functions; 60/40 split and fold-down seatbacks

OPERATION

Manual tilt and telescopic steering column

Steering wheel control switches

Drive mode select (Eco/Normal/Sport)

Electric Vehicle Drive Mode switch

Smart Entry & Start System

Card Key

INTERIOR

Analogue meters; Hybrid System Indicator, tachometer

4.2-inch colour Thin Film Transistor (TFT) multi-information display

Leather covered steering wheel (sports style for F Sport)

Vanity mirrors and lamps (front seats)

Door pockets (front doors); bottle holders

Dual-zone auto air conditioning system; independent temperature controls for front seats, clean air filter with micro dust and pollen removal function

NAVIGATION AND AUDIO

Lexus Navigation System

10.3-inch Electro Multi-Vision display; Remote Touch

10 speaker Premium Sound System; AM/FM radio, in-dash DVD player, MP3 and WMA play compatible; voice recognition

Bluetooth function; hands-free calling, audio streaming

USB x2 / audio input 3.5mm jack

EXTERIOR

Acoustic UV Cut windshield glass; UV Cut water repellent front door; UV Cut privacy rear glass

Power adjustable heated door mirrors (auto fold, auto dimming, reverse tilt and memory - available with Leather accented seat option and F Sport)

Auto rain-sensing wiper system

Halogen headlights (Base model & Leather accented seat option)

Bi-Beam LED headlights; auto-leveling function; headlight cleaners (F Sport only)

LED rear turn signals, high-mount stop light, Daytime Running Lights

LED Front fog lights, large roof spoiler (F Sport only)

SAFETY & SECURITY

Lexus Safety System +: Pre-Crash Safety system with AEB; Dynamic Radar Cruise Control ; Automatic High Beam; Lane Departure Alert with steering assist and Vehicle Sway Warning

5-Star ANCAP Safety Rating

Traction Control System

Vehicle Stability Control

Anti-lock Brake System with Electronic Brake force Distribution

Brake Assist system

Hill-start Assist Control

Automatic anti-glare interior mirror

8 airbags: Dual-stage front seats, driver and front passenger knee airbags, front seat side airbags, front and rear curtain shield airbags

WIL (Whiplash Injury Lessening) concept front seats

Front and rear park assist sensors

Reversing Camera with Active Guidelines

3-point Emergency Locking Retractor (ELR) seatbelts - all seats, pretensioners and force limiters - front seats

Anchor bars for fixing ISOFIX-compliant child seat (outer rear seats), 3 x Tether Anchors

Security alarm system; immobiliser

LEXUS SAFETY SYSTEM +



CT200h
17" Silver Painted Alloy Wheels



CT200h F Sport
17" Dark Premium Polished Alloy Wheels

SPECIFICATIONS CT200h

DIMENSIONS & WEIGHT

Overall length: 4355mm

Overall width: 1765mm

Overall height: 1455mm

Wheelbase: 2600mm

Track: Front - 1525mm; Rear - 1520mm

Kerb weight: 1410-1465kg

Gross vehicle weight: 1845kg

CHASSIS

Suspension - Base model: MacPherson strut type (Front)/Double wishbone type (Rear), front and rear stabiliser bars

Suspension - F Sport model: MacPherson strut type (Front)/Double wishbone type (Rear), front and rear stabiliser bars, sports tuned shock absorbers, unique F Sport suspension settings, front and rear performance dampers

Steering system: Electric Power Steering

Brakes: Front: 255mm ventilated discs

Rear: 279mm solid discs

Minimum turning circle: 10.4m

Fuel tank capacity: 45 litres

Tyres: 215/45R17. Temporary type spare tyre

Towing capacity: Not rated

ENGINE

Type: 1.8-litre, 4-cylinder in-line Double Overhead Cam 16-valve (2ZR-FXE, Atkinson Cycle Hybrid)

Displacement: 1798cc

Fuel system: Electronic Fuel Injection; Fuel 95 Octane or higher

Fuel consumption: 4.1L/100km*

Emissions: 94g/km*

Emission standard: Euro 5

MOTOR

Total system power: 100kW

Connection method: Series Parallel

TRANSMISSION

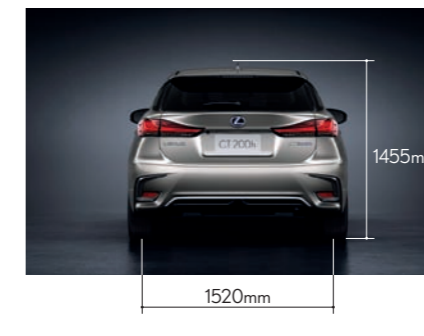
Type: Electronic Continuously Variable Transmission

HYBRID BATTERY

Type: Sealed Nickel-Metal Hydride

Overall Voltage: 201.6V

*Fuel consumption (combined ADR 81/02) , CO₂ emissions (combined ADR 79/04)





For more detail visit: lexus.co.nz | 08004LEXUS

*Fuel consumption and CO₂ emissions will vary depending on driving conditions/style, vehicle condition and options/accessories fitted. Fuel consumption (combined ADR 81/02), CO₂ emissions (combined ADR 79/04). Every endeavour has been made to ensure text details and specifications contained in this publication were accurate as at 17 November, 2017. Lexus New Zealand reserves the right at any time to introduce any changes deemed necessary to improve the models shown or for any other reason. Paint, upholstery and interior trim colours shown in this brochure may differ from actual colours due to variations in printing processes. Some models shown in this brochure may have optional accessories fitted. For further information contact your nearest Authorised Lexus Dealer. They will be glad to assist. Production effective August 2017. 1,000 • LEXUSCT17S • November 2017