

UX

UX 200 / UX 250h



OVERSEAS MODEL SHOWN

 LEXUS
EXPERIENCE AMAZING



THE ALL-NEW UX

When there's so much to experience in life, why let anything get in the way? The first Lexus compact crossover with amongst the widest fields of view in its class, Lexus UX opens up a new way to experience the world. Agile handling, intuitive technology and a refined interior let you take on the city with sharp precision and absolute class. So whatever horizons you want to discover, you'll get there in style.

BREAKING DESIGN BOUNDARIES

The all-new Lexus UX challenges design boundaries with its elegantly sculpted exteriors that bring a strong aesthetic that is both stylish and sporty. A uniquely designed car, the UX is sure to make heads turn on the road.

The UX has been purposefully designed to be extremely agile and responsive thanks to a very rigid body and low centre of gravity. It is reassuringly stable around bends and over uneven surfaces. Stability at speed and in cross winds is enhanced by unique aerodynamic stabilisers, subtly incorporated into the design of the wheel arches and rear lights.

From the brave front end reflected in the signature Lexus grille to the sporty silhouette and bold rear design, the UX gives you a new perspective on an SUV. The interior is just as exciting, inspired by traditional Japanese 'engawa' verandas that seamlessly blends the inside and outside, resulting in an absolute freedom to pursue whatever horizon you seek - whether you're in or out of the city.

"Our aim for the new UX was not to conform to the established crossover look, but to break with convention and create something more distinctive and dynamic."
UX CHIEF ENGINEER CHIKA KAKO

OVERSEAS MODEL SHOWN

UX

EXTERIOR

*Finally, a car as inspired as your lifestyle.
Command the freedom to chase your
horizon, from the driver's seat.*



A NEW PERSPECTIVE ON CROSSOVER TECHNOLOGY

The UX is designed to empower you in your everyday. Every Lexus comes with a wealth of innovative technology, and the UX is no exception. The Panoramic View Monitor combines the images from four video cameras to give you an amazing 360° birds-eye view of the car and its surroundings for more precise manoeuvring (F Sport and Limited variants).

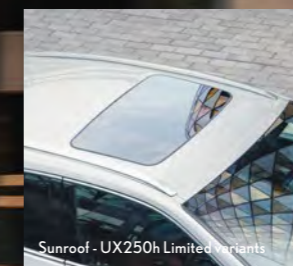
Now you can command any bump or turn in the road, and whatever life springs at you. A key focus of the human-centered design was forward visibility, with the aim of providing a commanding view and peace of mind. Special attention was given to the design of the front pillars and door mirror area, creating a space between the pillar and mirror to enhance the visibility of pedestrians and bicycles at intersections.

The forward placement of the sunroof (Limited variants) lets in an abundance of light, enhancing the open and airy feeling in the cabin. Its structure and shape were refined to help reduce wind noise when it is open.

The ultra-compact 3-eye Bi-Beam LED headlights (F Sport & Limited variants) combine a beautiful distinctive design with exceptional light distribution. The Lexus signature L-shaped Daytime Running Lights set above the headlights feature distinctive vertical illumination lines that enhance the feeling of depth.

The bold design of the rear combination lights reinforces the UX's unique identity. The left and right lights are connected by the aero stabilising blade lights to form a single line of light across the rear, illuminated by 132 LEDs. This form is complemented by the advanced aerodynamics of the L-shaped race car-inspired fins, which contribute to excellent rear stability while cornering and in side winds.

Combining high rigidity with excellent recyclability, the rear bumper accentuates the dynamic SUV presence of the rear design, endowing it with a strong sense of stability. Reversing lights are integrated into the lower section.



Sunroof - UX250h Limited variants



UX

INTERIOR

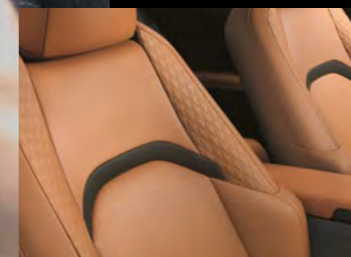
DISCOVER AMAZING CRAFTSMANSHIP

We believe that a beautiful exterior can inspire, but it is the quality and thoughtfulness of the interior that ensure the relationship will deepen over time. Inside the UX we have crafted the feeling of home. One of the optional interior trims, for example, was inspired by the grain pattern of Japanese hand-made paper known as 'washi', helping to create a mood of calm and warmth. The theme continues with 'sashiko' leather upholstery, a quilting technique used to strengthen Judo and Kendo uniform - durable, but exceptionally comfortable.

The Japanese concept of 'engawa', or the harmonious melding of indoor and outdoor spaces, is most evident in the driver's seat, where the instrument panel appears to continue through the windscreen into the bonnet. When combined with the outstanding front visibility, it makes it easy to manoeuvre in the city and outside it. With the all-new UX, you get the best view of the road, and beyond it.

Realising the 'Seat in Control' concept of the human centred interior, the displays are designed to provide the driver with an intuitive interface that provides clear information without changing posture or line of sight. The 10.3-inch EMV (Electro Multi-Vision) displays incoming hands-free mobile calls, audio system and other information, and coordinates the display of select information with the multi-information display integrated into the 7-inch colour TFT (Thin Film Transistor) Optitron meter, and the large colour Head-Up Display positioned in the driver's line-of-sight. The drive mode select switch is conveniently located on the meter hood bezel.

For variant specific features please refer to the specification pages.



The wide, colour Head-up Display projects a range of frequently checked information on the lower windshield glass in the driver's line of sight, including the current speed, tachometer, audio system, and more.

The Remote Touch Interface is designed for smartphone-style operation. The cursor can be adjusted to stop following flick operation to suit the user's preferences. Pinch-in and pinch-out operation enables continuous in and out zooming.

Blending sophisticated design with ease of use, remote switches to control the audio system are integrated into the base of the palm rest. The layout and number of switches are arranged for intuitive control of frequently-used functions by the hand resting on the palm rest, without changing posture or line of sight.

An imaginative approach to technology drove the development of a single easy-to-use air conditioning vent knob that controls both air direction and volume. The integration of wireless LED lighting (Limited variants) into the knob makes it easy to use at night, and projects a futuristic sophistication with its sense of depth.

The wireless charging tray in the centre console enables wireless charging of batteries in Qi compatible smartphones and electronic devices simply by placing them on the charger tray.

Supporting an active lifestyle, the luggage space highlights the practical convenience of the packaging and thoughtful design. For longer items and larger loads, the 60/40 split rear seatbacks fold down to create various passenger and luggage configurations.

UX

SPECIFICATIONS

UX 200

2.0 LITRE PETROL

4 CYLINDER ENGINE

126kW MAXIMUM POWER

8.9 SECS 0-100KM

CVT DIRECT SHIFT CONTINUOUSLY VARIABLE TRANSMISSION



UX 250h

2.0 LITRE PETROL HYBRID

4 CYLINDER ENGINE

135kW TOTAL COMBINED POWER

8.4 FWD SECS 0-100KM

8.6 AWD SECS 0-100KM

E-CVT ELECTRONIC CONTINUOUSLY VARIABLE TRANSMISSION

UX

SAFETY

Lexus UX variants provide exceptional safety provisions with the latest Lexus Safety System+. This package of active safety technologies provides new capabilities and expands the driving scenarios in which it can provide added protection for driver and passengers and help prevent an accident from happening.

The Pre-Collision System has millimetre-wave radar and monocular camera sensors to detect a vehicle ahead, a pedestrian during the day or at night, or a cyclist during the day and determine that a crash is likely, it alerts the driver and activates pre-crash brake assist when the driver depresses the brake pedal. If the driver cannot depress the brake pedal, it activates the pre-collision brake to help avoid a crash or mitigate the impact force.

When Lane Tracing Assist is activated, it alerts the driver of possible lane or road deviations and helps assist steering to avoid them. In addition, while driving on highways with All-speed Dynamic Radar Cruise Control activated, it helps assist steering to keep the vehicle in the lane. In addition to maintaining a constant speed, Dynamic Radar Cruise Control uses the millimetre-wave radar and camera sensors to detect a vehicle driving ahead and maintain an appropriate distance between vehicles.

The Adaptive High-beam System* detects the headlights of oncoming vehicles, tail lights of preceding vehicles, and brightness of the surrounding area. When it detects a vehicle within the area illuminated by the high beams, it disables/enables 11 LEDs on each side to minutely adjust the lit and unlit areas, optimising light distribution. By partially blocking light from the high-beam headlights so that they don't directly project onto a preceding or oncoming vehicle, the system helps contribute to safe driving at night.

Rear Cross Traffic Alert detects vehicles and pedestrians approaching from behind while reversing, and alerts the driver on the display and with a buzzer in the event that a collision is determined to be likely.

When the quasi-millimetre-wave radars in the rear bumper detect vehicles in adjacent lanes that aren't visible in the door mirrors, the Blind Spot Monitor System activates an LED warning indicator in the relevant door mirror the moment a vehicle enters this blind spot.

To help check areas surrounding the vehicle that are difficult to see from the driver's seat, the Panoramic View Monitor** shows a bird's-eye view of the vehicle in real time on the 10.3-inch EMV display, using a composite image taken by cameras mounted on the front, sides, and rear of the vehicle.

* F Sport & Limited variants ** F Sport & Limited variants

The UX's elegant driving performance is underpinned by active and passive safety measures that utilise advanced technologies to deepen your peace of mind.



UX

HYBRID SYSTEM

The Hybrid System was developed to deliver outstanding fuel economy together with linear acceleration for an exhilarating driving feel that enhances the driving pleasure of a Lexus hybrid crossover. The combination of a highly-responsive engine, efficient hybrid control system and enhanced battery performance provides exhilarating driving with high-speed responsiveness and a feeling of smooth, natural acceleration, so the UX 250h moves in tune with the driver's expectations.

Key to the Hybrid System's development was a focus on creating compact lightweight components to fulfill the promise of economical yet exhilarating driving. The brain of the Lexus Hybrid Drive, the power control unit optimises control of DC electricity from the battery and AC electricity for driving the motor and generator. The Ni-MH battery optimises the battery layout and adopts a compact cooling system to enable the ample luggage space, as well as helping to optimise the low centre of gravity.



2.0-litre 4-cylinder engine (M20A-FXS)
The advanced 2.0-litre inline 4-cylinder engine utilises high-speed combustion technology to deliver powerful performance together with exceptional fuel efficiency and environmental friendliness. The amount of motor assist and engine rpm were optimised to deliver a linear acceleration feeling, with the engine speed synchronised with increasing vehicle speed to deliver an immediate and continuous acceleration feeling.



UX

F SPORT

The exclusive sports seats evoke the sharp design of the LC's sports seats. An 'integrated foaming' structure contributes to the excellent fit and holding performance. Optimised for the F SPORT, these seats combine outstanding comfort with excellent support for the body during sports driving.

Evolved from the LFA supercar, the advanced interface of the F Sport's sliding meter ring uses motion graphics that combine beautiful design with excellent visibility to display a range of functions that instantly communicate important information according to its priority.

The meter ring on the large Thin Film Transistor colour multi-information display slides to the side at a touch of a switch on the steering wheel. Conveniently located on the meter bezel, the drive mode select switch lets the driver select the performance mode to suit their mood and driving style, with the choice of Eco, Normal, and Sport S/S+ Modes. In addition, Custom Mode enables customisation of settings for the powertrain, AVS, EPS and air conditioning.

F SPORT evolves the Lexus sport DNA that finds its ultimate expression in the LFA supercar, to enable more drivers to experience its unique personality.



OVERSEAS MODEL SHOWN



F SPORT FLARE RED SHOWN

The integration of exclusive F SPORT refinements and sports tuning gives drivers a strong sense of oneness with the car, heightening the immediacy and thrill of sports driving.

Building on the secure powerful presence of the UX, the F SPORT pursues a low, wide form that evokes sports performance at a glance. It integrates exclusive F SPORT design features that include the mesh radiator grille, front and rear lower bumper garnish, 18-inch aluminium wheels and select exterior colours. The sporty feeling is amplified in the driver's cockpit with its exclusive sports seats, TFT meters, clock, steering wheel with paddle shifters, shift knob and pedals, and realised in the specially-tuned Adaptive Variable Suspension, performance dampers and Active Sound Control.

The rear performance dampers quickly absorb body flex and vibrations from the road while driving to heighten handling stability and smooth ride comfort. Together with the front performance rod they enhance straight line driving stability for accurate, stable handling and outstanding comfort in normal driving, and dynamic performance and stability in high-speed driving.

Adaptive Variable Suspension system optimally controls the damping force of the shock absorbers on all four wheels in response to driver input and road surface conditions, contributing to excellent ride comfort and handling. Acceleration Sound Control enhances the engine sound to provide audible feedback of the vehicle's response, enhancing the feeling of unity between the driver and car, and the exhilaration of F SPORT performance.

UX

EXTERIOR COLOURS



Titanium | 1J7



Basalt Mica | 1H9



Sonic Quartz | 085 | N/A F SPORT



Platinum Silver | 1J4



Graphite Black | 223



Deep Metallic Bronze | 4X2 | N/A F SPORT



Caliente | 3T2



Blazing Carnelian | 4Y1



Celestial Blue | 8Y6



Terrane Khaki | 6X4



White Nova | 083 | F SPORT ONLY

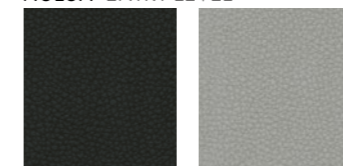


Cobalt | 8X1 F SPORT ONLY



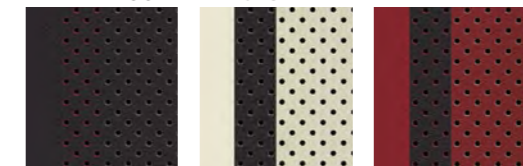
Paint, upholstery and interior trim colours shown in this brochure may differ from actual colours due to variations in printing processes.

NULUX ENTRY LEVEL



Black White Ash

LEATHER ACCENTED F SPORT



Black White Flare Red

SMOOTH LEATHER ACCENTED LIMITED



Black White Ash Ochre Rich Cream

MAIN FEATURES UX 200 / UX 250h

	FWD ENTRY	FWD SPORT	FWD ENTRY	FWD SPORT	FWD LIMITED	AWD ENTRY	AWD LIMITED
	UX 200		UX 250h				
EXTERIOR							
Bi-beam LED low & high beam headlights; auto-levelling system; LED Daytime Running Lights; LED front fog lights; auto lights off system	•		•			•	
LED 3-eye projector-type headlights; auto-levelling system; LED Daytime Running Lights; LED front fog lights; wide-angle cornering lights; auto lights off system; headlight cleaners		•		•	•		•
Acoustic windshield glass; front door water repellent tinted glass (acoustic for Limited); rear door, side glass and rear hatch privacy glass - all with UV reduction	•	•	•	•	•	•	•
Heated exterior mirrors with power folding	•		•			•	
Heated exterior mirrors with power folding; reverse tilt, auto dimming, auto folding and memory		•		•	•		•
F Sport front bumper, front mesh grille, front fender emblems and alloy wheels		•		•			
18" alloy wheels with run-flat tyres	•	•	•	•	•	•	•
INTERIOR							
Single ring-style meter, 7" colour single ring digital meter display; GPS set analogue clock	•		•			•	
Single ring-style meter (F Sport moveable ring), 7" colour digital meter display (F Sport), 8" colour digital meter display (Limited); colour Head-up Display; GPS set analogue clock		•		•	•		•
Nulux power adjustable (10-way driver, 8-way front passenger) heated front seats, 60/40 manual folding rear seat	•		•			•	
F Sport leather accented power adjustable (10-way driver, 8-way front passenger), 3 position memory function; heated front seats with ventilation; 60/40 manual folding rear seat; Aluminium pedals		•		•			
Sashiko quilted leather accented power adjustable (10-way driver, 8-way front passenger), 3 position memory function; heated front seats with ventilation; 60/40 folding rear seats					•		•
Centre console box with 2-way opening; vanity mirrors and lights (front seats); front and outer rear seat cup holders; front door bottle holders	•	•	•	•	•	•	•
Climate control air conditioning system; independent temperature controls for front seats, clean air filter with pollen and odour removal	•	•	•	•	•	•	•
OPERATION							
Smart key and Push Button Start system with remote central door locking and panic function; power back door release function; card key	•	•	•	•	•	•	•
Alarm system with siren, glass-break, tilt and intrusion sensors; immobiliser	•	•	•	•	•	•	•
Power tilt and telescopic steering column	•	•	•	•	•	•	•
Steering wheel controls for audio, phone, voice, multi-information display; paddle shifters (F Sport variants)	•	•	•	•	•	•	•
Front and rear parking assist-sensors; reversing camera with dynamic guidelines	•	•	•	•	•	•	•
Panoramic view monitor - four high-resolution cameras mounted on the front, sides and rear of the vehicle give drivers a bird's-eye view of the near environment		•		•	•		•
Kick sensor power back door with memory function	•	•	•	•	•	•	•
NAVIGATION & AUDIO							
Lexus audio system with 10.3" display, AM/FM radio, in-dash CD/DVD player, 8 speakers, Bluetooth function with hands-free calling and music streaming, 2 x USB ports (front charge/play), 2 x USB ports (rear charge) 1 x 3.5mm audio jack	•	•	•	•		•	
Mark Levinson Premium audio system with 10.3" display, AM/FM radio, in-dash CD/DVD player, 13 speakers, Clari-Fi music restoration technology, Bluetooth function with hands-free calling and music streaming, 2 x USB ports (front charge/play), 2 x USB ports (rear charge) 1 x 3.5mm audio jack					•		•
Remote Touch Interface Lexus Navigation System with SUNA Traffic Avoidance System (traffic information only available in some regions)	•	•	•	•	•	•	•
SAFETY							
Lexus Safety System+: Pre-Collision System with Autonomous Emergency Braking for vehicles, cyclist and pedestrians; all-speed Dynamic Radar Cruise Control; Lane Tracing Assist - Lane Departure Alert with steering assist, Lane Centring function and Vehicle Sway Warning; Automatic High Beam (entry level variants), Adaptive High-beam System (F Sport & Limited variants)	•	•	•	•	•	•	•
Anti-lock Brake System (ABS) with Electronic Brake force Distribution (EBD), Brake Assist system (BA), Vehicle Stability Control (VSC) and Hill-start Assist Control (HAC)	•	•	•	•	•	•	•
Active Cornering Assist, Traction Control System (TRC)	•	•	•	•	•	•	•
8 airbags: Driver and front passenger front, driver and front passenger seat side, driver knee, front passenger knee and front and rear curtain shield airbags	•	•	•	•	•	•	•
Blind Spot Monitor System (BSM); Rear Cross Traffic Alert (RCTA)	•	•	•	•	•	•	•
3-point ELR seatbelts on all seats with pretensioners and force limiters for front seats and outer rear seats	•	•	•	•	•	•	•
2 x ISOFIX compliant child seat anchor points and 3 x top tether anchors	•	•	•	•	•	•	•

SPECIFICATIONS UX 200 / UX 250h

DIMENSIONS & WEIGHT	
Overall length:	4495mm
Overall width:	1840mm
Overall height:	1520mm
Wheelbase:	2640mm
Track:	Front and rear 1550mm
Kerb weight:	1490-1540kg UX 200 1575-1625kg UX 250h FWD 1635-1680kg UX 250h AWD
Gross vehicle weight:	1980kg UX 200 2110kg UX 250h
Towing capacity braked:	750kg (UX 250h not rated)
Towing capacity unbraked:	750kg (UX 250h not rated)
CHASSIS	
Suspension:	Front - MacPherson strut type, stabiliser bar Rear - Trailing arm double wishbone type, stabiliser bar Front & Rear - Adaptive Variable Suspension (F Sport variants)
Steering system:	Electric Power Steering
Brakes:	Front - ventilated discs; Rear - solid discs; Electronic parking brake
Minimum turning circle:	10.4m (tyre)
Fuel tank capacity:	47 litres UX 200, 43 litres UX 250h
Tyres:	225/50RF18 run-flat tyres

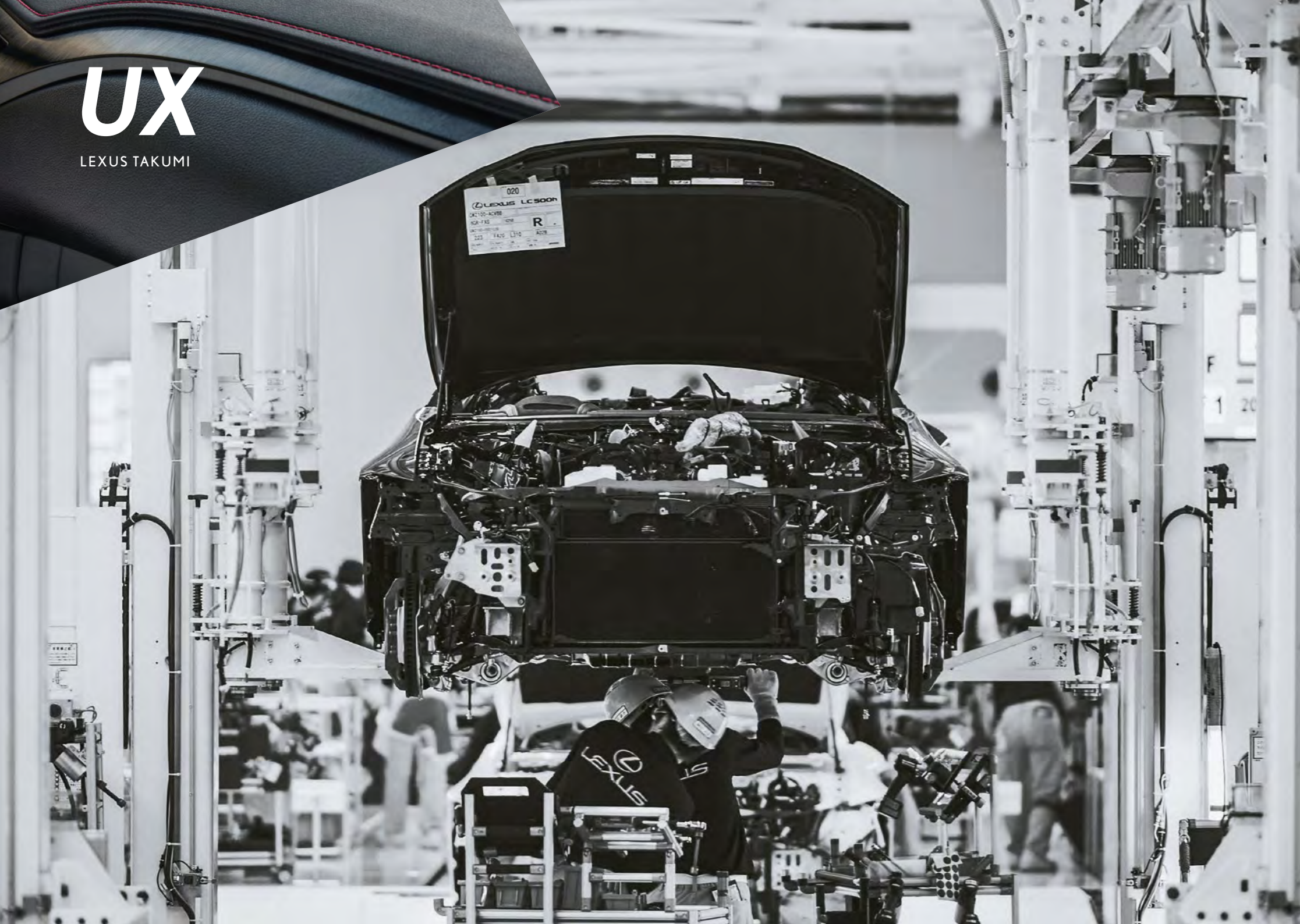
ENGINE UX 200	
Type:	2.0-litre, 4-cylinder in-line DOHC 16-valve with Start & Stop Function
Piston displacement:	1987cc
Maximum power:	126kW @ 6600rpm
Maximum torque:	205Nm @ 4800rpm
Fuel system:	D-4S (Direct-injection 4-stroke Superior-version) (recommended RON 91 or higher)
Fuel consumption:	5.8L/100km (combined)
CO ₂ emissions:	132g/km (combined)
Transmission:	Direct Shift Continuously Variable Transmission
ENGINE UX 250h	
Type:	2.0-litre, 4-cylinder in-line DOHC 16-valve
Piston displacement:	1987cc
Maximum power:	107kW @ 6000rpm
Maximum torque:	188Nm @ 4400-5200rpm
Total system output:	135kW
Fuel system:	D-4S (Direct-injection 4-stroke Superior-version) (recommended RON 91 or higher)
Fuel consumption:	4.5L/100km* (combined) UX 250h FWD variants 4.7L/100km* (combined) UX 250h AWD variants
CO ₂ emissions:	103g/km* (combined) UX 250h FWD variants 107g/km* (combined) UX 250h AWD variants
Hybrid battery type:	Ni-MH (Nickel-Metal Hydride)
Transmission:	Electronically Controlled Continuously Variable Transmission E-Four AWD System UX 250h AWD variants

*Fuel consumption (combined ADR 81/02), CO₂ emissions (combined ADR 79/04)



UX

LEXUS TAKUMI



Every Lexus is based on an uncompromising approach to creating premium automobiles. Inspired by our 'Yet' philosophy, we seek innovation in every facet of engineering through a sophisticated fusion of seemingly incompatible ideas such as 'high performance yet high fuel efficiency'. In addition, unique Lexus styling is born of our L-finesse design language, a fine balance of 'Leading-edge' and 'finesse', so that every Lexus is not only captivating and luxurious, but also highly refined. Finally, every new Lexus model is also measured against a set of internal standards covering design, performance, specifications and equipment, to confirm it is distinctive and worthy of the Lexus emblem.

This pursuit of perfection is evident at every stage of the manufacturing process. Every Lexus vehicle is created with a masterful skill and attention to detail inspired by both traditional artisanship and state-of-the-art engineering. For example, at the Tahara plant in Japan, precision components made using leading-edge digital technology are assembled and finished by master craftsmen called Takumi, whose technical expertise and sure senses are honed by decades of rigorous experience.



Lexus Warranty

An important part of the peace of mind that comes with owning a Lexus is the built-in warranty on your vehicle. Each new Lexus vehicle comes with a four year unlimited kilometre* warranty, supplemented by a six year Corrosion Perforation Warranty. This warranty is offered to the first owner and subsequent owners within this four year period.

Lexus Service Plan

The Lexus Full Maintenance Service Plan that accompanies every new Lexus covers all parts and labour costs associated with the Lexus recommended service schedule for a period of four years unlimited kilometres from the date of first registration. It combines an exacting standard of maintenance with a high level of customer convenience and ensures your Lexus is serviced, as it should be - by specially trained Lexus technicians.

Lexus On Call

With Lexus On Call we've made sure the service that makes Lexus unique will always be as close as your phone or computer. This way, you can summon assistance whenever required. In the event of an emergency or breakdown we like to take special care of you and your Lexus. Your comments are also important to us, so you're most welcome to contact us anytime and talk to us about your Lexus experience.

Lexus Plus

We know that a helping hand can be invaluable in an emergency. Lexus Plus, in conjunction with the New Zealand Automobile Association (AA), provides a special nationwide emergency service for Lexus owners. The Lexus Plus programme provides extended protection against the possibility of being stranded away from home because of a vehicle breakdown. It gives you constant access to immediate help 24 hours a day, seven days a week.

Lexus Plus offers a range of services whether you require roadside assistance to recover your vehicle or alternative transport home.

Lexus will also arrange any accommodation and rental car requirements that may arise if breakdown repairs cannot be completed on the day of the emergency (conditions apply).

Lexus Financial Services

There is an extensive range of tailored finance solutions available through your Lexus dealer designed to make acquiring a Lexus as effortless as driving one. Whether you require a fleet or personal finance plan, there are a wide range of options for leasing or purchasing a vehicle to suit your individual needs.

* Four Year Warranty is made up of three year New Vehicle Warranty and one year Lexus Care Warranty.



Lexus On Call is your direct link to Lexus support.
FREEPHONE (24 hours): 0800 4 LEXUS (0800 453 987)
WEB: www.lexus.co.nz
EMAIL: oncall@lexus.co.nz

OVERSEAS MODEL SHOWN

LEXUS OF NORTH SHORE

4 Link Drive, Wairau Valley
AUCKLAND 0627
(09) 442 3670
info@lexusofnorthshore.co.nz

LEXUS OF AUCKLAND CITY

29 Great North Road, Grey Lynn
AUCKLAND 1021
(09) 370 0227
info@lexusofaucklandcity.co.nz

LEXUS OF HAMILTON

5 Kahu Crescent, Te Rapa Park
HAMILTON 3200
(07) 974 1778
admin@lexusofhamilton.co.nz

LEXUS OF HAWKE'S BAY

505 Karamu Road North,
HASTINGS 4122
0800 425 3987
marketing@lexushb.co.nz

LEXUS OF WELLINGTON

54 Kent Terrace, Mount Victoria
WELLINGTON 6011
(04) 802 0610
info@lexusofwellington.co.nz

LEXUS OF CHRISTCHURCH

227 Montreal Street, Christchurch Central
CHRISTCHURCH 8011
(03) 363 8748
info@lexusofchristchurch.co.nz

LEXUS OF QUEENSTOWN

52 Lucas Place
QUEENSTOWN 9300
(03) 442 4095
lexus@gwd.co.nz

THE IMAGES AND CONTENT IN THIS BROCHURE HAVE BEEN SOURCED GLOBALLY AND MAY DIFFER FROM NEW ZEALAND SPECIFICATION.

*Fuel consumption and CO₂ emissions will vary depending on driving conditions/style, vehicle condition and options/accessories fitted. Fuel consumption (combined ADR81/02), CO₂ emissions (combined ADR79/04).

Every endeavour has been made to ensure text details and specifications contained in this publication were accurate as at 28 January, 2019. Lexus New Zealand reserves the right at any time to introduce any changes deemed necessary to improve the models shown or for any other reason. Paint, upholstery and interior trim colours shown in this brochure may differ from actual colours due to variations in printing processes. Some models shown in this brochure may have optional accessories fitted. For further information contact your nearest Authorised Lexus Dealer. They will be glad to assist. Production effective October 2018. 1,000 • LEXUSUX219 • January 2019

For more detail visit:

lexus.co.nz | 08004LEXUS

 LEXUS

