

RX



 LEXUS
EXPERIENCE AMAZING

RX



NEXT CHAPTER

The pioneer in luxury SUVs, the RX continues to evolve and lead. Driven by its DNA to actively undertake fresh challenges, its sophisticated design and performance, and advanced technologies provide fresh value to enrich modern lifestyles.

The development of the RX's 'Progressive Sophistication' was driven by a passion to deepen three key elements of driving pleasure:

Sophisticated Yet Aggressive Design focused on shaping a powerful, solid-looking design with an exceptional feeling of unity. A finely-honed blend of elegance and aggression, it is expressed in the overall form, balance and detail, with rounded surfaces adding a subtle elegance to the strong captivating silhouette.

Driving Dynamics pursued a clear and deep driving feel that unifies driver and vehicle to dramatically enhance driving pleasure, realised by focusing on enhancing body rigidity and refining the suspension.

The smooth and exhilarating acceleration, linear steering feel, accurate response to driver input and outstanding ride comfort elevate the enjoyment of everyday driving, whether turning at an intersection or changing lanes on the expressway.

Advanced Technology and Connectivity aims to integrate advanced technologies that RX drivers value into a refined driving experience. The RX's pioneering spirit inspired adoption of the innovative BladeScan Adaptive High-beam System headlights to help provide reliable, stress-free driving at night, and an advanced multimedia system with touchscreen operation and seamless smartphone connectivity with Apple CarPlay® and Android Auto™.

Deepening the Seductive Strength design theme that fuses sophistication and aggression, the smooth curves of the exterior shape a captivating presence, while optimising the packaging in the spacious cabin and luggage space for which the RX is renown.



RX

EXTERIOR DESIGN

The voluminous form and smooth surfaces that seduce from a distance reveal meticulous detail close-up, exquisitely crafted to blend form with function in the signature Lexus spindle grille and distinctive ultra-compact headlights.

Aerodynamics A comprehensive approach to aerodynamics contributes to quiet comfort in the cabin, fuel-efficient performance, low sensitivity to wind turbulence, and excellent handling stability even during high-speed driving. Optimising the body design, including the bumpers, rear spoiler and corner fins, is complemented under the body by a flat floor, engine and lower arm covers, spats on all four wheels, and aero stabilising fins.

3-lens LED headlights These ultra-compact headlights (F Sport & Limited) combine a distinctive design with exceptional light distribution. The LED turn signal lights illuminate sequentially from the inner side to the outside of the headlights.

LED front fog lights LED fog lights integrated into the lower front bumper emphasise the low centre of gravity of the front face. They emit a bright beam, contributing to excellent visibility for safe driving in low light and at night.

LED rear combination lights The distinctive rear lights feature 4 large L-shaped Lexus motifs in the upper lamps that wrap around the side in a deep-set carve. This elegant design is mirrored in the inverted L-shaped motifs of the lower lamps, creating a wide signal and projecting a strong presence. The LED sequential turn signals (F Sport & Limited) illuminate from the inner to the outer side of the light to intuitively convey the turn direction.

Power back door Even if both hands are full, when carrying the Electronic Key you can open and close the back door automatically by moving your foot under the rear bumper and out again.

Door handles The refined design displays a warm hospitality with a dynamic shape that is easy to grip. A bright silhouette line and integrated foot area illumination on the handles guide you at night, then gently fade.

The RX continues to lead the way and provide fresh value with sophisticated features that blend innovative technology and incisive design. Its advanced connectivity, functionality and safety enhance convenience, refine comfort, and contribute to relaxed, stress-free driving.



RX

INTERIOR DESIGN

The RX continues to lead the way and provide fresh value with sophisticated features that blend innovative technology and incisive design. Its advanced connectivity, functionality and safety enhance convenience, refine comfort, and contribute to relaxed, stress-free driving. The refined use of natural materials including metal, leather and wood creates a tasteful contrast with the subtle integration of advanced technology, blending beauty, functionality and convenience in the elegant ambience of the cabin.

Meters The meters fuse the simple functionality of the analog meters with a hi-tech digital display. The large analog speedometer and tachometer have three-dimensional meter faces for excellent visibility.

Multimedia co-ordination function The RX's seamless integration of advanced technologies supports the co-ordinated display of information from the multimedia systems on the Electro Multi-Vision touch display in the centre of the instrument panel and the 4.2" colour Thin Film Transistor multi-information display in the meter cluster.

Colour head-up display projects a range of frequently checked driving information and warnings on the lower windshield glass in the driver's line of sight, requiring only a movement of the eyes to see it (F Sport & Limited).

Remote Touch Interface is designed for simple, smartphone-style operation and lets users interact intuitively with the navigation and audio systems on the EMV touch display. Integrated into the centre console, it provides easy control of the systems without disturbing the driving posture and line of sight.

Wireless device charger This thoughtful charging tray at the front of the centre console enables wireless charging of Qi-compatible smartphones and electronic devices simply by placing them on the charger tray.

EMV touch display Further evolving the Human Machine Interface, the touchscreen display enables the driver and front seat passenger to intuitively control various systems by directly touching the screen like a smartphone. For convenience, audio system information, incoming mobile calls, and some navigation on the EMV touch display can also be displayed on the multi-information display, and controlled using switches on the steering wheel.

Mark Levinson premium audio system Exclusive to the Limited variants this audio system features 15 speakers that generate outstanding output. The system also incorporates Clari-Fi technology which analyses compressed digital music sources in real time and intelligently restores the high fidelity no matter what the music source, creating rich low-range tones and beautiful mid- to high-range tones for the enjoyment of occupants in every seat.



The advanced touchscreen provides seamless smartphone connectivity with Apple CarPlay and Android Auto.



The RX450hL/RX350L changes to suit your needs, whether you require comfortable third row seats for extra passengers or a spacious luggage compartment. Theatre-style seating provides a slightly higher eye point in each successive row so that all occupants enjoy excellent visibility and a satisfying open feeling.

OVERSEAS MODEL SHOWN

RX

F SPORT

Lexus F DNA injects the aggressive styling and an exhilarating performance edge of F Sport driving into the RX, with sports-focused refinements of the design, performance and features.

The exclusive F Sport package instantly projects an aggressive sporting attitude with large 20" aluminium wheels, an exclusive front grille mesh pattern and integrated lower spoiler that visually lower the centre of gravity. The jet black, chrome plated lower rear bumper, black door mirrors, and discreet F Sport emblems on the front fenders reinforce the distinctive style.

In the driver's seat, the feeling of sports driving control is compelling and immediate. The extra support of the seat, dimpled leather steering wheel and shift lever knob, custom sports meters and displays, and drilled aluminium pedals give a sports edge to driving control. This feeling of control is transformed into F Sport exhilaration by fine-tuning of the front and rear suspension, and the ability to customise drive mode select to enhance handling stability and sharpen response.

Performance dampers enhance rigidity and vibration damping performance, to realise exceptional handling stability at the heart of sports driving enjoyment.

F Sport front seats These are the product of an innovative 'integrated foaming' manufacturing process. A blend of refined comfort with firm support and excellent holding performance for sports driving.

Aluminium trim on the doors and centre console reinforces the distinctive premium sports styling, its texture and finish appealing to the eye and touch, deepening the pleasure of F Sport driving.

F Sport meter The exclusive F Sport analog tachometer features a large silver ring with an illuminated needle and a precision digital speedometer. Shift position/drive mode select indicators are in the centre. Adjacent to the large circular meter is a smaller analog meter showing coolant temperature and fuel.

F Sport multi-information display The 8" colour TFT multi-information display heightens the immediacy of your F Sport driving experience by displaying a G sensor with steering angle, accelerator opening and brake hydraulic pressure bars.



RX

PERFORMANCE

A passion for sporty performance drove a focus on enhancing body rigidity, honing the RX's dynamic responsiveness and intuitive handling and control, qualities you'll appreciate in everyday driving, and savour even more on the open road.

Chassis At the heart of the RX's dynamic driving pleasure is a focus on enhancing exhilarating performance and sporty handling, especially handling stability to create a close sense of unity with the vehicle, together with steering response and ride comfort. It was realised by making a lightweight, high rigidity body structure from hot-stamp, high-tensile steel and aluminium, with strategically positioned reinforcements, the extensive use of spot welds and body adhesives, and advanced production technologies including laser screw welding.

Aerodynamics A comprehensive approach to aerodynamics contributes to quiet comfort in the cabin, fuel-efficient performance, low sensitivity to wind turbulence, and excellent handling stability even during high-speed driving. Optimising the body design, including the bumpers, rear spoiler and corner fins, is complemented under the body by a flat floor, engine and lower arm covers, spats on all four wheels, and aero stabilising fins.

RX 350 petrol engine The 3.5 litre V6 petrol engine with Dual VVT-i (Intake side: VVT-iW) generates exhilarating driving performance balanced by excellent fuel efficiency. The innovative D-4S fuel injection system features both direct and port injectors, to realise excellent output, torque and fuel efficiency, while complying with strict emission standards.

Dynamic Torque Control AWD The electronically-controlled system continually varies distribution of drive power to the rear wheels, switching from front-wheel drive to AWD to realise handling stability to suit the driving conditions, especially while cornering, together with excellent fuel economy.

RX 450h Hybrid System For dynamic driving and exceptional environmental performance, Lexus Hybrid Drive intelligently combines the power of a highly-efficient 3.5-litre petrol engine with electric power from a high-output motor.

Electric four-wheel drive E-Four uses a rear motor that operates independently from the front motor to optimise distribution of front and rear drive force. In addition, it features slip and yaw rate feedback controls, for excellent vehicle stability in a wide range of driving conditions.



SPECIFICATIONS

RX 350 / RX 350L

3.5L
PETROL

V6
CYLINDER ENGINE

221kW / 216kW
MAXIMUM POWER
RX 350 / RX 350L

9.6L / 10.2L
COMBINED FUEL CONSUMPTION
RX 350 / RX 350L

8-SPEED
AUTOMATIC TRANSMISSION, ALL WHEEL DRIVE

SPECIFICATIONS

RX 450h / RX 450hL

3.5L
PETROL HYBRID

V6
CYLINDER ENGINE

230kW
TOTAL SYSTEM OUTPUT
RX 450h / RX 450hL

5.7L / 6.0L
COMBINED FUEL CONSUMPTION
RX 450h / RX 450hL

E-CVT
ELECTRONICALLY CONTROLLED
CONTINUOUSLY VARIABLE TRANSMISSION,
ALL WHEEL DRIVE

RX

SAFETY

Pre-Collision System When the millimeter-wave radar and monocular camera sensors detect a vehicle ahead, a pedestrian during the day or at night, or a cyclist during the day and determine that a collision is likely, it alerts the driver and activates pre-collision brake assist when the driver depresses the brake pedal. If the driver cannot depress the brake pedal, it activates the pre-collision brake to help avoid a collision or mitigate the impact force.

Dynamic Radar Cruise Control In addition to maintaining a constant speed, Dynamic Radar Cruise Control uses the millimeter-wave radar and camera sensors to detect a vehicle driving ahead and maintain an appropriate distance between vehicles.

Adaptive High-beam System In the BladeScan AHS, LED light is projected onto a plate rotating at high speed called a 'blade mirror,' with the reflected light passing rapidly through a lens to illuminate the forward direction. The LEDs switch on and off with optimal timing to enable fine control of light distribution, enhancing the range of illumination while blocking a small area in front of the car. This enables the BladeScan system to provide a broad field of high-beam illumination with natural light distribution to enhance the visibility of road shoulders and other more distant areas, supporting early driver recognition of pedestrians and road signs without dazzling the drivers of oncoming or preceding vehicles.

Lane Tracing Assist When Lane Tracing Assist is activated, it alerts the driver of possible lane or road deviations and helps assist steering to avoid them. In addition, while driving on highways and automobile-only roads with Dynamic Radar Cruise Control activated, it helps assist steering to keep the vehicle in the lane.

Parking Support Alert PKSA detects stationary objects such as walls in the direction of travel, as well as vehicles approaching from behind while reversing and alerts the driver on the display and with a buzzer in the event that a collision is determined to be likely.

Parking Support Brake PKSB further enhances parking safety by combining Intelligent Clearance Sonar in front and rear bumpers with Rear Cross Traffic auto braking.



Parking Support Alert



Dynamic Radar Cruise Control



Adaptive High-beam System



RX

EXTERIOR & INTERIOR COLOURS



Titanium | 1J7



Ice Ecrú | 4X8 | n/a F Sport



Sonic Quartz | 085 | n/a F Sport



Graphite Black | 223



Terrane Khaki | 6X4 | n/a F Sport



Deep Metallic Bronze | 4X2 | n/a F Sport



Burgundy | 3R1



Deep Blue | 8X5



White Nova | 083 | F Sport only



Cobalt | 8X1 | F Sport only



20" alloy wheels | RX entry level



20" alloy wheels | RX F Sport



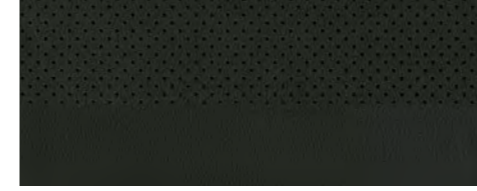
20" alloy wheels | RX Limited

SOME IMAGES AND CONTENT IN THIS BROCHURE HAVE BEEN SOURCED GLOBALLY AND MAY DIFFER FROM NEW ZEALAND SPECIFICATION.

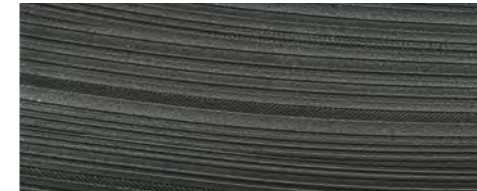
ENTRY LEVEL SMOOTH LEATHER ACCENTED SEAT MATERIAL & TRIM



Rich Cream
64 3D Film



Black
24 3D Film

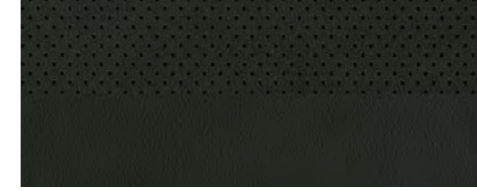


3D Film

LIMITED VARIANTS SEMI-ANILINE LEATHER ACCENTED SEAT MATERIAL & TRIM



Ivory
00 Laser Cut Wood | 01 Shimamoku | 02 Bamboo | 03 Walnut



Black
20 Laser Cut Wood | 21 Shimamoku | 22 Bamboo | 23 Walnut



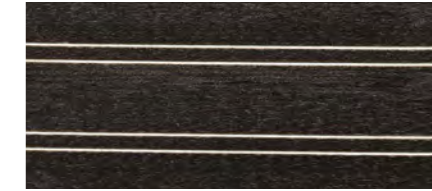
Noble Brown
40 Laser Cut Wood | 41 Shimamoku | 42 Walnut



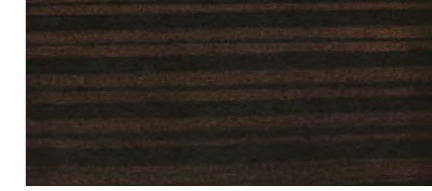
Ochre
50 Laser Cut Wood | 51 Shimamoku | 52 Bamboo | 53 Walnut



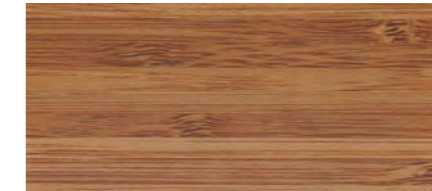
Rich Cream
60 Laser Cut Wood | 61 Shimamoku | 62 Walnut



Laser Cut Wood



Shimamoku



Bamboo (matte finish)

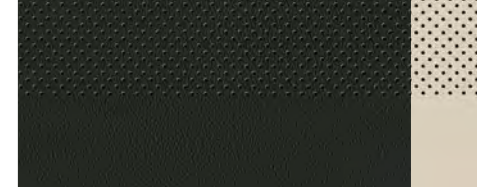


Walnut

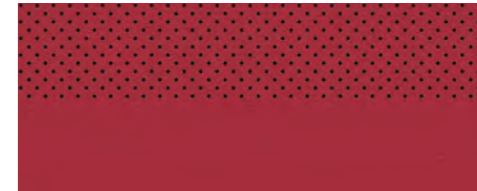
F SPORT LEATHER ACCENTED SEAT MATERIAL & TRIM



F Sport Black
25 Aluminium



F Sport Black & White
27 Aluminium



F Sport Flare Red
30 Aluminium



Aluminium

RX

MAIN FEATURES

	RX 350	RX 350 F SPORT	RX 350 LIMITED	RX 350 LIMITED	RX 450h	RX 450h F SPORT	RX 450h LIMITED	RX 450h LIMITED
EXTERIOR	Bi-LED projector type headlights; auto-levelling system; LED Daytime Running Lights; LED front fog lights; LED wide-angle cornering lights							
	3-lens LED headlights; auto-levelling system; headlight cleaners; LED Daytime Running Lights; LED front fog lights; LED wide-angle cornering lights; sequential LED front and rear turn signals							
	Acoustic windshield glass; front door water repellent glass; rear privacy glass - all with UV reduction							
	Automatic anti-glare heated exterior mirrors with LED side turn signals, auto power folding, interlink with reverse gear, wide view and memory							
INTERIOR	Panoramic sunroof with power tilt and slide front section, fixed rear section							
	Power tilt and slide sunroof							
	4.2-inch colour Thin Film Transistor (TFT) multi-information display; GPS set analogue clock							
	Seats: Smooth leather accented with perforations; 8-way power adjustable front seats and 2 way lumbar adjustment, 3 position memory function for driver's seat; heated front seats with ventilation, 4-way manual 2nd row seat adjustment							
	Seats: F Sport smooth leather accented with perforations; 8-way power adjustable front seats and 2 way lumbar adjustment, 3 position memory function for driver's seat; heated front seats with ventilation; 2nd row outer rear seat heaters; 2nd row seat power recline and manual slide							
	Seats: Semi-aniline leather accented with perforations; 10-way power adjustable front seats with 3 position memory function and 4 way lumbar adjustment; heated front seats with ventilation, 2nd row outer rear seat heaters; 2nd row seat power recline (manual RX L variants) and manual slide; 3rd row 2 position power slide and 50/50 folding (RX L variants)							
	Colour Head-up display - vehicle speed, warning indicator, tachometer, shift position and route guidance							
	Vanity mirrors and lights (front seats); centre console box, 2 x front cupholders, 2nd row armrest with 2 x cupholders; front and rear door bottle holders; 3rd row with 2 x cupholders (RX L variants)							
	Dual zone climate control air conditioning system; clean air filter with pollen and odour removal function; window defogger							
	Three zone climate control air conditioning system and rear control panel; clean air filter with pollen and odour removal function; window defogger							
Black resin and stainless steel scuff plates (with illuminated Lexus logo for Limited variants)								
OPERATION	Smart key entry and push button start with panic function, illuminated walk-up, entry and exit system; remote rear door release function							
	Power tilt and telescopic steering column with memory. Steering wheel controls for audio, phone, voice, multi-information display; Lane Departure Alert; cruise control stalk							
	Drive Modes: Eco, Normal and Sport; EV (RXh/RXhL variants)							
	Drive Modes: Eco, Normal, Customise, Sport S, Sport S+; EV (RXh/RXhL variants)							
	Wireless charger for smart phone (Qi compatible only)							
	Panoramic view monitor							
Touchless power back door; opening angle adjustment								

	RX 350	RX 350 F SPORT	RX 350 LIMITED	RX 350 LIMITED	RX 450h	RX 450h F SPORT	RX 450h LIMITED	RX 450h LIMITED
NAVIGATION AUDIO	Lexus Surround Sound System with touch sensitive 12.3" EMV display; AM/FM radio, in-dash DVD player, 12 speakers including rear subwoofer; Apple CarPlay® and Android Auto™, Bluetooth function, hands-free calling, 6 x USB ports - 4 x front, 2 x rear; voice recognition; Remote Touch Interface Lexus Navigation System with SUNA Traffic Channel							
	Mark Levinson Premium Surround Sound System with touch sensitive 12.3" EMV display; AM/FM radio, in-dash DVD player, 15 speakers including rear subwoofer; Apple CarPlay® and Android Auto™, Bluetooth function; hands-free calling, 6 x USB ports - 4 x front, 2 x rear; voice recognition; Clari-Fi compressed music restoration technology; Remote Touch Interface Lexus Navigation System with SUNA Traffic Channel							
	ANCAP 5 Star Safety Rating							
SAFETY	Lexus Safety System +: Pre-Collision System with Autonomous Emergency Braking - pedestrian and vehicle detection day/night, cyclist daytime detection; All-speed Dynamic Radar Cruise Control, BladeScan Adaptive High-beam System (F Sport and Limited variants), Automatic High-beam System (Entry level variants), Lane Tracing Assist, Lane Departure Alert with steering assist, Vehicle Sway Warning, Road Sign Assist							
	Driver and front passenger dual stage front, driver's knee, driver and front passenger seat side, front passenger cushion; outer 2nd row seat side and front/rear curtain shield airbags							
	Anti-lock Brake System with Electronic Brake force Distribution, Brake Assist system, Brake hold, Emergency Stop Signal, Hill-start Assist Control							
	Traction Control System and Vehicle Stability Control							
	Reversing camera; Blind Spot Monitor; Active Cornering Assist, Secondary Collision Brake							
	Parking Support Brake including Intelligent Clearance Sonar and Rear Cross Traffic Auto Braking; 4 x front and 4 x rear sensors							
	3-point Emergency Locking Retractor seatbelts on all seats with pretensioners and force limiters for front and outer 2nd row seats							
	ISOFIX compliant child seat anchor points on outer 2nd row seats; top tether anchors on all 2nd row seats; 1 x top tether anchor on 3rd row seats (RX L variants)							
	Tyre pressure monitor system							
	Alarm system with horn and siren, intrusion sensor; glass break sensor; incline sensors; immobiliser							
OPT	Panoramic sunroof with power tilt and slide front section, fixed rear section							

RX

SPECIFICATIONS

DIMENSIONS & WEIGHT

Overall length:	4890mm RX 5000mm RXL
Overall width:	1895mm
Overall height:	1690mm RX 350 1685mm RX 450h 1700mm RXL
Wheelbase:	2790mm
Track:	1640mm Front; 1630mm Rear
Ground clearance:	200mm RX 350 195mm RX 450h 200mm RXL
Kerb weight:	1980-2085kg RX 350 2090-2150kg RX 350L 2105-2210kg RX 450h 2220-2275kg RX 450hL
Gross vehicle weight:	2575kg RX 350 2720kg RX 350L 2715kg RX 450h 2840kg RX 450hL
Towing capacity:	2000kg braked; 750kg unbraked RX 350, RX 350L, RX 450h Not rated RX 450hL
Luggage capacity (to roof):	2nd row up - 519 litres RX 350, 514L RX 450h 3rd row up - 176 litres; 3rd row down - 652 litres RXL

CHASSIS

Suspension:	MacPherson strut type (front); Double wishbone type (rear), front and rear stabiliser bars Front and rear Performance Rod F Sport variants Adaptive Variable Suspension F Sport variants
Steering system:	Electric Power Steering (EPS)
Brakes:	Front: Ventilated discs; Rear: Ventilated discs
Minimum turning circle (Tyres):	11.8m
Fuel tank capacity:	72 litres RX 350 RX 350L; 65 litres RX 450h, RX 450hL
Tyres:	235/55R20; Temporary spare wheel

ENGINE RX 350

Type:	3.5-litre V6 Quad Cam 24-valve (2GR-FKS, 95 octane or higher recommended)
Piston displacement:	3456cc
Maximum power:	221kW @ 6300rpm RX 350 216kW @ 6300rpm RX 350L
Maximum torque:	370Nm @ 4600-4700rpm RX 350 358Nm @ 4600-4700rpm RX 350L
Fuel system:	D-4S (Direct injection 4 stroke petrol engine Superior version)
Fuel consumption:	9.6L/100km (combined)* RX 350 10.2L/100km (combined)* RX 350L
CO ₂ emissions:	223g/km (combined)* RX 350 234g/km (combined)* RX 350L
Transmission:	8-speed Automatic Transmission with multi-mode; All Wheel Drive

ENGINE RX 450h

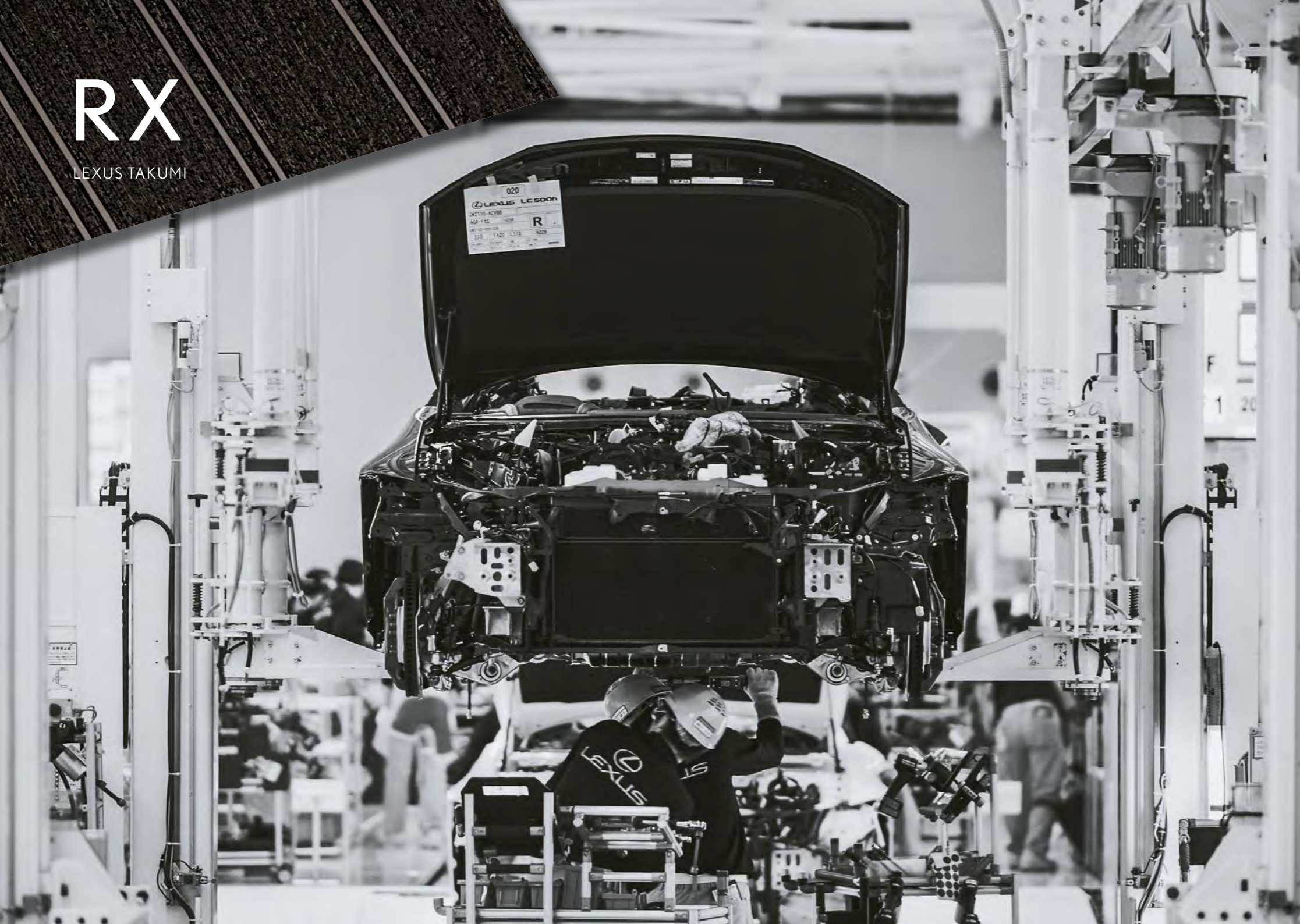
Type:	3.5-litre V6 Quad Cam 24-valve (2GR-FXS, 95 octane or higher recommended)
Piston displacement:	3456cc
Maximum power:	193kW @ 6000rpm
Fuel system:	D-4S (Direct injection 4 stroke petrol engine Superior version)
Fuel consumption:	5.7L/100km (combined)* RX 450h 6.0L/100km (combined)* RX 450hL
CO ₂ emissions:	131g/km (combined)* RX 450h 137g/km (combined)* RX 450hL
Total system output:	230kW
Hybrid Battery Type:	Sealed Ni-MH (Nickel-Metal Hydride)
Transmission:	Electronically Controlled Continuously Variable Transmission (ECVT) All Wheel Drive

*Fuel consumption (combined ADR 81/02) , CO₂ emissions (combined ADR 79/04)



RX

LEXUS TAKUMI



Every Lexus is based on an uncompromising approach to creating premium automobiles. Inspired by our 'Yet' philosophy, we seek innovation in every facet of engineering through a sophisticated fusion of seemingly incompatible ideas such as 'high performance yet high fuel efficiency'.

In addition, unique Lexus styling is born of our L-finesse design language, a fine balance of 'Leading-edge' and 'finesse', so that every Lexus is not only captivating and luxurious, but also highly refined. Finally, every new Lexus model is also measured against a set of internal standards covering design, performance, specifications and equipment, to confirm it is distinctive and worthy of the Lexus emblem.

This pursuit of perfection is evident at every stage of the manufacturing process. Every Lexus vehicle is created with a masterful skill and attention to detail inspired by both traditional artisanship and state-of-the-art engineering.

For example, at the Tahara plant in Japan, precision components made using leading-edge digital technology are assembled and finished by master craftsmen called Takumi, whose technical expertise and sure senses are honed by decades of rigorous experience.



RX

LEXUS CARE

Lexus Warranty

An important part of the peace of mind that comes with owning a Lexus is the built-in warranty on your vehicle. Each new Lexus vehicle comes with a four year unlimited kilometre warranty, supplemented by a six year Corrosion Perforation Warranty. This warranty is offered to the first owner and subsequent owners within this four year period.

Lexus Service Plan

The Lexus Full Maintenance Service Plan that accompanies every new Lexus covers all parts and labour costs associated with the Lexus recommended service schedule for a period of four years unlimited kilometres from the date of first registration. It combines an exacting standard of maintenance with a high level of customer convenience and ensures your Lexus is serviced, as it should be - by specially trained Lexus technicians.

Lexus On Call

With Lexus On Call we've made sure the service that makes Lexus unique will always be as close as your phone or computer. This way, you can summon assistance whenever required. In the event of an emergency or breakdown we like to take special care of you and your Lexus. Your comments are also important to us, so you're most welcome to contact us anytime and talk to us about your Lexus experience.

Lexus Plus

We know that a helping hand can be invaluable in an emergency. Lexus Plus, in conjunction with the New Zealand Automobile Association (AA), provides a special nationwide emergency service for Lexus owners. The Lexus Plus programme provides extended protection against the possibility of being stranded away from home because of a vehicle breakdown. It gives you constant access to immediate help 24 hours a day, seven days a week.

Lexus Plus offers a range of services whether you require roadside assistance to recover your vehicle or alternative transport home.

Lexus will also arrange any accommodation and rental car requirements that may arise if breakdown repairs cannot be completed on the day of the emergency (conditions apply).

Lexus Financial Services

There is an extensive range of tailored finance solutions available through your Lexus dealer designed to make acquiring a Lexus as effortless as driving one. Whether you require a fleet or personal finance plan, there are a wide range of options for leasing or purchasing a vehicle to suit your individual needs.

* Four Year Warranty is made up of three year New Vehicle Warranty and one year Lexus Care Warranty.



LEXUS OF NORTH SHORE

4 Link Drive, Wairau Valley
AUCKLAND 0627
(09) 442 3670
info@lexusofnorthshore.co.nz

LEXUS OF AUCKLAND CITY

29 Great North Road, Grey Lynn
AUCKLAND 1021
(09) 370 0227
info@lexusofaucklandcity.co.nz

LEXUS OF HAMILTON

5 Kahu Crescent, Te Rapa Park
HAMILTON 3200
(07) 974 1778
admin@lexusofhamilton.co.nz

LEXUS OF HAWKE'S BAY

505 Karamu Road North,
HASTINGS 4122
0800 425 3987
marketing@lexushb.co.nz

LEXUS OF WELLINGTON

54 Kent Terrace, Mount Victoria
WELLINGTON 6011
(04) 802 0610
info@lexusofwellington.co.nz

LEXUS OF CHRISTCHURCH

227 Montreal Street, Christchurch Central
CHRISTCHURCH 8011
(03) 363 8748
info@lexusofchristchurch.co.nz

LEXUS OF QUEENSTOWN

52 Lucas Place
QUEENSTOWN 9300
(03) 442 4095
lexus@gwd.co.nz

Lexus On Call is your
direct link to Lexus support.

FREEPHONE (24 hours):
0800 4 LEXUS (0800 453 987)

WEB:
www.lexus.co.nz

EMAIL:
oncall@lexus.co.nz



THE IMAGES AND CONTENT IN THIS BROCHURE HAVE BEEN SOURCED GLOBALLY AND MAY DIFFER FROM NEW ZEALAND SPECIFICATION.

*Fuel consumption and CO₂ emissions will vary depending on driving conditions/style, vehicle condition and options/accessories fitted. Fuel consumption (combined ADR81/02), CO₂ emissions (combined ADR79/04).

Every endeavour has been made to ensure text details and specifications contained in this publication were accurate as at 18 October, 2019. Lexus New Zealand reserves the right at any time to introduce any changes deemed necessary to improve the models shown or for any other reason. Paint, upholstery and interior trim colours shown in this brochure may differ from actual colours due to variations in printing processes. Some models shown in this brochure may have optional accessories fitted. For further information contact your nearest Authorised Lexus Dealer. They will be glad to assist. Production effective August 2019.
1,000 • LEXUSR19 • October 2019

For more detail visit:

lexus.co.nz | 08004LEXUS

