

LEXUS

NX



# LEXUS NX

The NX was developed around the core concept of 'Premium Urban Sports Gear', a next-generation Lexus that applies an urban focus to luxury SUVs. 'Premium Urban' aims to create refined solutions to the mobility demands of city living, offering advanced technologies, excellent environmental performance and refined Lexus features that provide outstanding quality and driving pleasure. 'Sports' expresses a dynamic and active attitude that shapes the aggressive and very individual styling, and injects a sporting edge into driving, with sport-honed acceleration, control and handling.

It is intrinsically linked with 'Gear', a meticulous focus on refining every detail to offer the advanced functionality and effortless utility associated with the very best sports equipment, together with the eye-catching design and embrace of advanced technologies that set iconic 'Sports Gear' apart.

The result is a game-changing, urban-focused SUV, with the acceleration, agility and handling to effortlessly negotiate city traffic, the utility to meet the ever-changing needs of an active and dynamic lifestyle, fuel efficiency that embodies environment-aware values, and the sophisticated features and refined detail that is a Lexus hallmark.



# EXTERIOR DESIGN

Lexus NX fuses superb agility and dynamic individuality with spacious functionality creates a fresh sporting spirit.

The foundation of the NX's responsive sporty handling is a lightweight, high rigidity body structure made from hot-stamp, high-tensile steel and aluminium, with strategically positioned reinforcements. The use of innovative production technologies including laser screw welding and body adhesives, together with extensive spot welding, enhances the rigidity of panel joints, and contributes to the excellent handling, refined comfort and quiet ride.

The NX's superb aerodynamics contribute to fuel-efficient performance and quiet comfort in the cabin, even during high-speed driving. Careful attention paid to reducing drag, including an integrated rear spoiler, spats for all four wheels, and the engine, floor, lower arm and rear underbody covers, contributes to a smooth airflow.

Drive mode select provides integrated control of multiple systems to let you tune performance to suit your driving style. On F Sport variants you can select and change between Normal, Eco, Sport S and Sport S+ Modes. In addition, Customise Mode enables drivers to set their preferred settings for the powertrain, Adaptive Variable Suspension, Electric Power Steering (EPS) and air conditioning.



# INTERIOR DESIGN

In Lexus NX the blend of functional and structural beauty with attention to detail enhances your driving pleasure.

NX presents a wide array of information via the 10.3" Electro Multi-Vision (EMV) and the 4.2" colour Thin Film Transistor (TFT) multi-information displays in the meter cluster coordinate audio system information, incoming mobile calls, and some navigation on the EMV display can also be displayed on the multi-information display, and controlled using switches on the steering wheel.

The 4-dial meter combines a three-dimensional analog speedometer and tachometer with a digital multi-information display that changes between blue and red illumination to highlight the drive mode selected.

The Remote Touch Interface allows for simple touchpad operation allowing users to interact intuitively with the navigation and audio systems on the 10.3-inch EMV display, providing easy control of the systems.

In F Sport and Limited variants the wide, colour head-up display projects a range of frequently checked information on the lower windshield glass in the driver's line of sight, including the current speed, tachometer, audio system, and more.

F Sport and Limited variants have a wireless charging tray in the center console box enables wireless charging of batteries in Qi-compatible smartphones and electronic devices simply by placing them on the charger tray.

Occupants of F Sport and Limited variants will enjoy the Mark Levinson Premium Surround Sound System features a compact 12-channel amplifier to drive 14 ultra-high efficiency speakers that generate outstanding output while significantly reducing energy consumption. A 71-channel surround system contributes to the high fidelity, concert hall-quality sound. The Clari-Fi™ system scans compressed audio files for lost music details and intelligently corrects waveform deficiencies based on existing music information and audio source quality.

Music that's been 'Clari-fied' sounds clearer, crisper, wider, and more dynamic. It's more faithful to the original recording.

Lexus Safety System +, which integrates active safety technologies, such as the Pre-Crash Safety system with vehicle and pedestrian detection, Autonomous Emergency Braking, All-speed Dynamic Radar Cruise Control, Lane Departure Alert, Automatic High-Beam for entry variants and Adaptive High-Beam System for F Sport and Limited variants.





# F SPORT PERFORMANCE

F Sport evolves the Lexus sport DNA that finds its ultimate expression in the LFA supercar, to enable more drivers to experience its exhilarating performance and unique personality. It further refines the agile, powerful performance of the NX to create a feeling of oneness with the car that comes from its immediate response to the driver's intentions in various driving situations.

Performance dampers integrated into the front and rear of the NX F Sport enhance rigidity and vibration damping performance, realising exceptional handling stability that is at the heart of sports driving enjoyment.

The F Sport multi-information display heightens your driving experience by displaying a G sensor with steering angle, accelerator opening and brake hydraulic pressure bars, and a turbo boost meter with oil temperature and pressure gauges (n/a NX 300h F Sport). Expressing dynamic sports performance, the exclusive analog meters feature full-length illuminated needles, silver needle rings, and distinctive white scales that evolved from the Lexus LFA supercar.

The F Sport front sports seats blend refined comfort with firm support and excellent holding performance for sports driving. An innovative 'integrated foaming' manufacturing process eliminates wrinkles and movement of the upholstery.



# SPECIFICATIONS

## NX 300

---

2.0 LITRE PETROL

---

4 CYLINDER TURBOCHARGED ENGINE

---

175kW MAXIMUM POWER

---

7.1~7.3 SECS 0-100KM

---

6-speed AUTOMATIC TRANSMISSION

---



## NX 300h

---

2.5 LITRE PETROL HYBRID

---

4 CYLINDER ENGINE

---

145kW TOTAL COMBINED POWER

---

9.2 SECS 0-100KM

---

E-CVT ELECTRONIC CONTINUOUSLY VARIABLE TRANSMISSION

---

EXTERIOR COLOURS



Sonic Quartz | 085 | N/A F SPORT



Platinum Silver | 114



Titanium | 117



Basalt Mica | 1H9



Graphite Black | 223



Deep Metallic Bronze | 4X2 | N/A F SPORT



Burgundy | 3R1



Sparkling Meteor | 8X9



White Nova | 083 | F SPORT ONLY



Lava | 4W7 | F SPORT ONLY



Cobalt | 8X1 | F SPORT ONLY

INTERIOR TRIMS



Dark Rose | Limited variants



Accent White | Limited variants



Flare Red | F Sport variants



18-inch alloy wheels | Base variants



18-inch alloy wheels | F Sport variants



18-inch alloy wheels | Limited variants

BASE GRADE

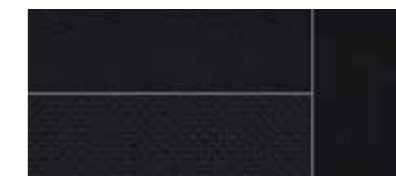


Black



White Ochre

F SPORT



Black



Flare Red



F Sport White

LIMITED



Black



Dark Rose



White Ochre



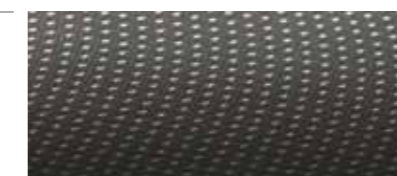
Ochre



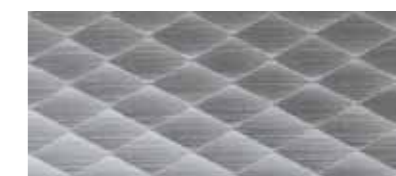
Accent White

LEATHER ACCENTED SEATS

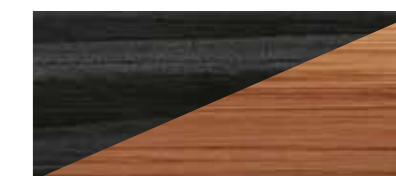
INTERIOR TRIM



Silver Film



Naguri-Style Aluminium



Shimamoku or Bamboo

MAIN FEATURES NX 300h / NX 300

	AWD	AWDF SPORT	AWDLIMITED	FWD	AWD	AWDF SPORT	AWDLIMITED
	NX 300h			NX 300			
<b>EXTERIOR</b>							
Bi-LED low & high beam headlights; auto-levelling system; LED Daytime Running Lights; LED front fog lights; wide-angle cornering lights; auto lights off system	•			•	•		
LED 3-eye projector-type headlights; auto-levelling system; LED Daytime Running Lights; LED front fog lights; wide-angle cornering lights; auto lights off system; headlight cleaners		•	•			•	•
Tinted acoustic windshield glass; front door water repellent tinted glass; rear door, side glass and rear hatch privacy glass - all with UV reduction	•	•	•	•	•	•	•
Automatic anti-glare heated exterior mirrors with LED side turn signal light, Blind Spot Monitor (BSM), power folding, interlink with reverse gear and wide view (memory function for F Sport & Limited)	•	•	•	•	•	•	•
F Sport front bumper, front mesh grille, front fender emblems and alloy wheels		•				•\	
<b>INTERIOR</b>							
4.2-inch colour multi-information display; analogue clock	•	•	•	•	•	•	•
Synthetic leather 8-way power adjustable heated front seats, 60/40 manual folding rear seat	•			•	•		
F Sport leather accented 8-way power adjustable front seats, driver seat power lumbar support and 3 position memory function; heated front seats with ventilation; 60/40 manual folding rear seat; Aluminium pedals		•				•	
Leather accented 8-way power adjustable front seats, driver seat power lumbar support and 3 position memory function; heated front seats with ventilation; 60/40 power folding rear seats			•				•
Center console box; vanity mirrors and lights (front seats); front and outer rear seat cupholders; front and rear door bottle holders	•	•	•	•	•	•	•
Auto air conditioning system; independent temperature controls for front seats, clean air filter with pollen and odour removal	•	•	•	•	•	•	•
<b>OPERATION</b>							
Smart key system with remote central door locking and panic function; power back door release function	•	•	•	•	•	•	•
Alarm system with siren, glass-break, tilt and intrusion sensors; immobiliser	•	•	•	•	•	•	•
Power tilt and telescopic steering column	•	•	•	•	•	•	•
Steering wheel controls for audio, phone, voice, multi-information display; Paddle shifters	•	•	•	•	•	•	•
Wireless charger (Qi compatible only)		•	•			•	•
Front and rear parking assist-sensors; reversing camera with moving guidelines	•	•	•	•	•	•	•
Panoramic view monitor - four high-resolution cameras mounted on the front, sides and rear of the vehicle give drivers a bird's-eye view of the near environment		•	•			•	•
Power back door with memory function	•	•	•	•	•	•	•
<b>NAVIGATION &amp; AUDIO</b>							
Pioneer audio system with 10.3" display, AM/FM radio, in-dash CD/DVD player, 10 speakers, Bluetooth function with hands-free calling and music streaming, 2 x USB ports/1 x 3.5mm audio jack,	•			•	•		
Mark Levinson Premium audio system with 10.3" display, AM/FM radio, in-dash CD/DVD player, 14 speakers, Clari-Fi music restoration technology, Bluetooth function with hands-free calling and music streaming, 2 x USB ports/1 x 3.5mm audio jack		•	•			•	•
Remote Touch Interface Lexus Navigation System with SUNA Traffic Avoidance System (traffic information only available in some regions)	•	•	•	•	•	•	•
<b>SAFETY</b>							
Lexus Safety System +: Pre-Crash Safety system with Autonomous Emergency Braking for vehicles and pedestrians, all-speed Dynamic Radar Cruise Control, Lane Departure Alert with steering assist and Vehicle Sway Warning, Automatic High Beam (entry level variants), Adaptive High-beam System (F Sport & Limited variants)	•	•	•	•	•	•	•
5-Star ANCAP Safety Rating	•	•	•	•	•	•	•
Anti-lock Brake System (ABS) with Electronic Brake force Distribution (EBD), Brake Assist system (BA), Vehicle Stability Control (VSC) and Hill-start Assist Control (HAC)	•	•	•	•	•	•	•
Traction Control System (TRC), Trailer Sway Control (TSC)	•	•	•	•	•	•	•
8 airbags: Driver and front passenger front, driver and front passenger seat side, driver knee, front passenger cushion and front and rear curtain shield airbags	•	•	•	•	•	•	•
Blind Spot Monitor System (BSM); Rear Cross Traffic Alert (RCTA)	•	•	•	•	•	•	•
3-point ELR seatbelts on all seats with pretensioners and force limiters for front seats; Whiplash Injury Lessening (WIL) front seats	•	•	•	•	•	•	•
ISOFIX compliant child seat anchor points and top tether anchors on outer rear seats	•	•	•	•	•	•	•
Tyre inflation pressure warning system	•	•	•	•	•	•	•

SPECIFICATIONS NX300h / NX300

DIMENSIONS & WEIGHT	
Overall length:	4640mm
Overall width:	1845mm
Overall height:	1645mm
Wheelbase:	2660mm
Track:	Front - 1580mm, 1570mm F Sport variants Rear - 1580mm, 1570mm F Sport variants
Kerb weight:	1800-1895kg NX 300h 1700-1790kg NX 300 FWD 1755-1860kg NX 300 AWD
Gross vehicle weight:	2385kg NX 300h 2280kg NX 300 FWD 2350kg NX 300 AWD
Towing capacity braked:	1500kg (all variants)
Towing capacity unbraked:	750kg (all variants)
CHASSIS	
Suspension:	Front - MacPherson strut type, stabiliser bar Rear - Trailing arm double wishbone type, stabiliser bar Base & Limited variants  Adaptive Variable Suspension (AVS) with continuously variable damping force control performance dampers. Front - MacPherson strut type, stabiliser bar Rear - Trailing arm double wishbone type, stabiliser bar F Sport variants
Steering system:	Electric Power Steering (Speed Sensitive)
Brakes:	Front - ventilated discs; Rear - solid discs
Minimum turning circle:	11.4m
Fuel tank capacity:	56 litres NX 300h, 60 litres NX 300
Tyres:	225/60R18 Entry level & Limited 235/55R18 F Sport
Spare Wheel:	Temporary type

ENGINE NX 300h	
Type:	2.5-litre, 4-cyl. in-line DOHC 16-valve (2AR-FXE)
Piston displacement:	2494cc
Maximum power:	114kW @ 5700rpm
Maximum torque:	210Nm @ 4200-4400rpm
Fuel system:	Electronic Fuel Injection (recommended RON 91 or higher)
Fuel consumption:	5.7L/100km* (combined)
CO <sub>2</sub> emissions:	133g/km* (combined)
Hybrid battery type:	Ni-MH (Nickel-Metal Hydride)
Total system output:	145kW (Petrol Engine + Lexus Hybrid Drive)
Transmission:	Electronically Controlled Continuously Variable Transmission
ENGINE NX 300	
Type:	2.0-litre, 4-cyl. in-line DOHC 16-valve, turbocharged (8AR-FTS)  Features a Start and Stop Function
Piston displacement:	1998cc
Maximum power:	175kW @ 4800-5600rpm
Maximum torque:	350Nm @ 1650-4000rpm
Fuel system:	D-4ST (Direct-injection 4-stroke Superior-version with Turbo) (recommended RON 95 or higher)
Fuel consumption:	7.7L/100km FWD 7.9L/100km AWD* (combined)
CO <sub>2</sub> emissions:	178g/km FWD 184g/km AWD* (combined)
Transmission:	6-speed Automatic Transmission

\*Fuel consumption (combined ADR 81/02), CO<sub>2</sub> emissions (combined ADR 79/04)







# LEXUS TAKUMI

Every Lexus is based on an uncompromising approach to creating premium automobiles. Inspired by our 'Yet' philosophy, we seek innovation in every facet of engineering through a sophisticated fusion of seemingly incompatible ideas such as 'high performance yet high fuel efficiency'. In addition, unique Lexus styling is born of our L-finesse design language, a fine balance of 'Leading-edge' and 'finesse', so that every Lexus is not only captivating and luxurious, but also highly refined. Finally, every new Lexus model is also measured against a set of internal standards covering design, performance, specifications and equipment, to confirm it is distinctive and worthy of the Lexus emblem.

This pursuit of perfection is evident at every stage of the manufacturing process. Every Lexus vehicle is created with a masterful skill and attention to detail inspired by both traditional artisanship and state-of-the-art engineering. For example, at the Tahara plant in Japan, precision components made using leading-edge digital technology are assembled and finished by master craftsmen called Takumi, whose technical expertise and sure senses are honed by decades of rigorous experience.



# LEXUS CARE

## Lexus Warranty

An important part of the peace of mind that comes with owning a Lexus is the built-in warranty on your vehicle. Each new Lexus vehicle comes with a four year unlimited kilometre<sup>\*</sup> warranty, supplemented by a six year Corrosion Perforation Warranty. This warranty is offered to the first owner and subsequent owners within this four year period.

## Lexus Service Plan

The Lexus Full Maintenance Service Plan that accompanies every new Lexus covers all parts and labour costs associated with the Lexus recommended service schedule for a period of four years unlimited kilometres from the date of first registration. It combines an exacting standard of maintenance with a high level of customer convenience and ensures your Lexus is serviced, as it should be - by specially trained Lexus technicians.

## Lexus On Call

With Lexus On Call we've made sure the service that makes Lexus unique will always be as close as your phone or computer. This way, you can summon assistance whenever required. In the event of an emergency or breakdown we like to take special care of you and your Lexus. Your comments are also important to us, so you're most welcome to contact us anytime and talk to us about your Lexus experience.

## Lexus Plus

We know that a helping hand can be invaluable in an emergency. Lexus Plus, in conjunction with the New Zealand Automobile Association (AA), provides a special nationwide emergency service for Lexus owners. The Lexus Plus programme provides extended protection against the possibility of being stranded away from home because of a vehicle breakdown. It gives you constant access to immediate help 24 hours a day, seven days a week.

Lexus Plus offers a range of services whether you require roadside assistance to recover your vehicle or alternative transport home.

Lexus will also arrange any accommodation and rental car requirements that may arise if breakdown repairs cannot be completed on the day of the emergency.

## Lexus Financial Services

There is an extensive range of tailored finance solutions available through your Lexus dealer designed to make acquiring a Lexus as effortless as driving one. Whether you require a fleet or personal finance plan, there are a wide range of options for leasing or purchasing a vehicle to suit your individual needs.



\* Four Year Warranty is made up of three year New Vehicle Warranty and one year Lexus Care Warranty.



Lexus On Call is your direct link to Lexus support.

FREEPHONE (24 hours):  
0800 4 LEXUS (0800 453 987)

WEB:  
[www.lexus.co.nz](http://www.lexus.co.nz)

EMAIL:  
[oncall@lexus.co.nz](mailto:oncall@lexus.co.nz)

### LEXUS OF NORTH SHORE

4 Link Drive, Wairau Valley  
AUCKLAND 0627  
(09) 442 3670  
[info@lexusofnorthshore.co.nz](mailto:info@lexusofnorthshore.co.nz)

### LEXUS OF AUCKLAND CITY

29 Great North Road, Grey Lynn  
AUCKLAND 1021  
(09) 370 0227  
[info@lexusofaucklandcity.co.nz](mailto:info@lexusofaucklandcity.co.nz)

### LEXUS OF HAMILTON

5 Kahu Crescent, Te Rapa Park  
HAMILTON 3200  
(07) 974 1778  
[admin@lexusofhamilton.co.nz](mailto:admin@lexusofhamilton.co.nz)

### LEXUS OF HAWKE'S BAY

505 Karamu Road North,  
HASTINGS 4122  
0800 425 3987  
[marketing@lexushb.co.nz](mailto:marketing@lexushb.co.nz)

### LEXUS OF WELLINGTON

54 Kent Terrace, Mount Victoria  
WELLINGTON 6011  
(04) 802 0610  
[info@lexusofwellington.co.nz](mailto:info@lexusofwellington.co.nz)

### LEXUS OF CHRISTCHURCH

227 Montreal Street, Christchurch Central  
CHRISTCHURCH 8011  
(03) 363 8748  
[info@lexusofchristchurch.co.nz](mailto:info@lexusofchristchurch.co.nz)

### LEXUS OF QUEENSTOWN

52 Lucas Place  
QUEENSTOWN 9300  
(03) 442 4095  
[lexus@gwd.co.nz](mailto:lexus@gwd.co.nz)

THE IMAGES AND CONTENT IN THIS BROCHURE HAVE BEEN SOURCED GLOBALLY AND MAY DIFFER FROM NEW ZEALAND SPECIFICATION.

\*Fuel consumption and CO<sub>2</sub> emissions will vary depending on driving conditions/style, vehicle condition and options/accessories fitted.

Fuel consumption (combined ADR 81/02), CO<sub>2</sub> emissions (combined ADR 79/04).

Every endeavour has been made to ensure text details and specifications contained in this publication were accurate as at 19 June, 2018.

Lexus New Zealand reserves the right at any time to introduce any changes deemed necessary to improve the models shown or for any other reason. Paint, upholstery and interior trim colours shown in this brochure may differ from actual colours due to variations in printing processes. Some models shown in this brochure may have optional accessories fitted. For further information contact your nearest

Authorised Lexus Dealer. They will be glad to assist.

Production effective September 2017.

1,000 • LEXUSNX18 • June 2018

For more detail visit:

[lexus.co.nz](http://lexus.co.nz) | 08004LEXUS

 LEXUS

