

LEXUS
EXPERIENCE AMAZING

LX

LX450d



LX

LEXUS

LEXUS
EXPERIENCE AMAZING

lexusindia.co.in
Lexus Owner's Desk, 24/7
1800 300 53987 [1800 300 LEXUS]



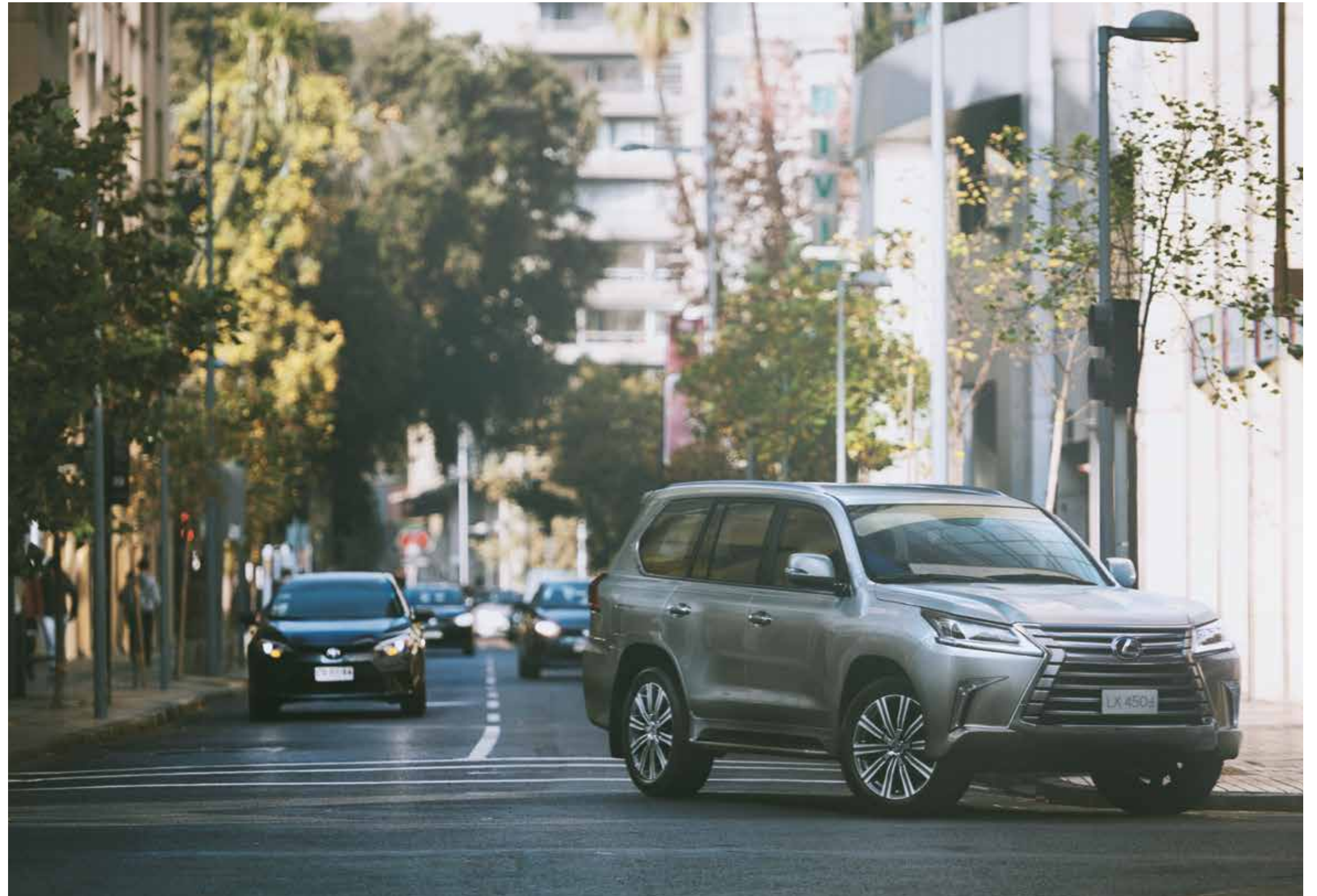
Luxury exists wherever you seek it.

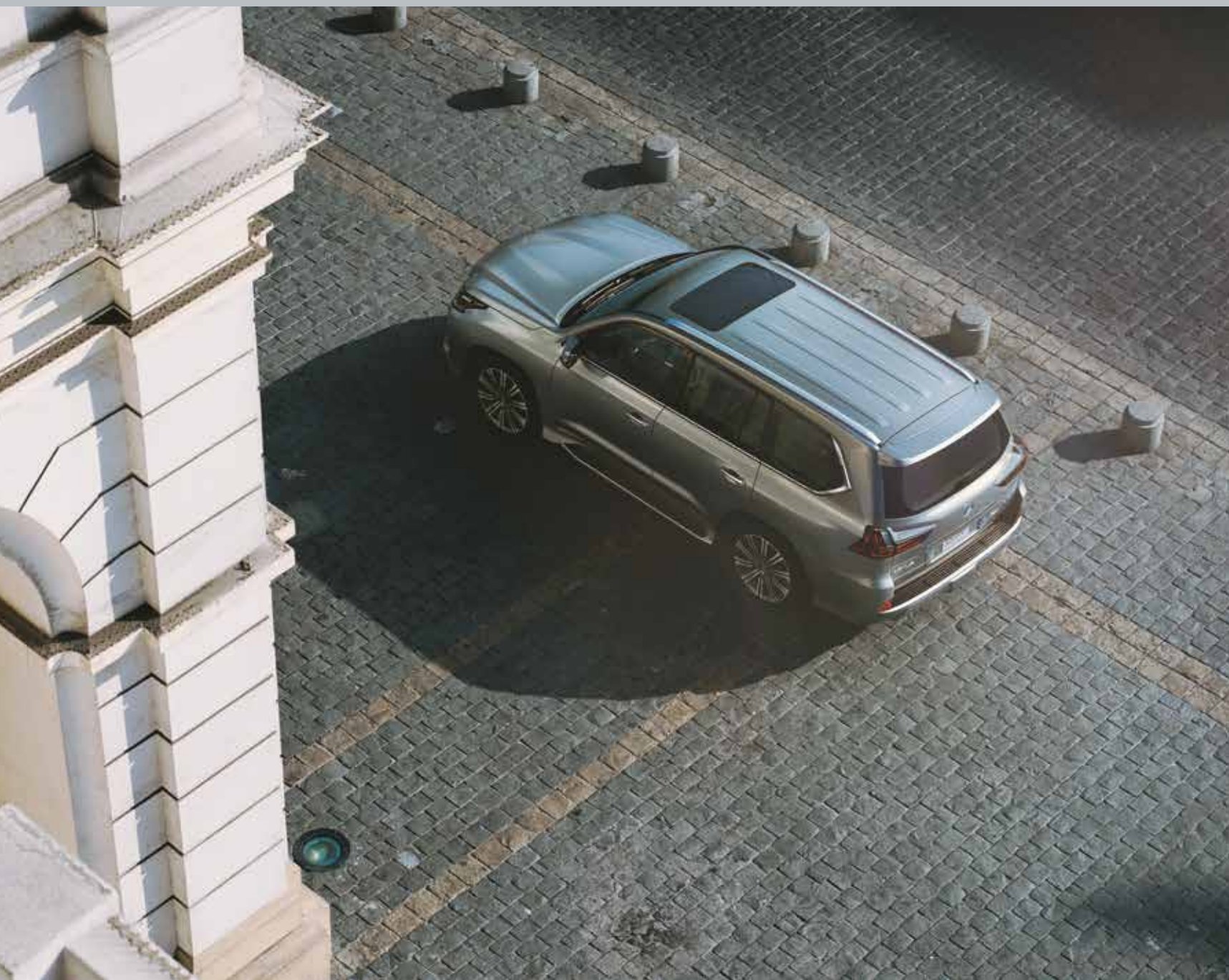
LX	» P2
LX CONCEPT	» P35
DESIGN	» P41
OFF-ROAD TECHNOLOGY	» P45
PERFORMANCE	» P49
FEATURES	» P55
SAFETY	» P65
COLOURS	» P68
SPECIFICATIONS	» P72
TAKUMI	» P75
ENVIRONMENT	» P77





*For a long time I thought my future and music lay in the city.
As long as I tried to fit in,
I believed I could create a new world.*





*When I'm in the city,
I have all the instruments and equipment I need
to create sounds that are new to the world.
Yet somehow, something essential is missing.*



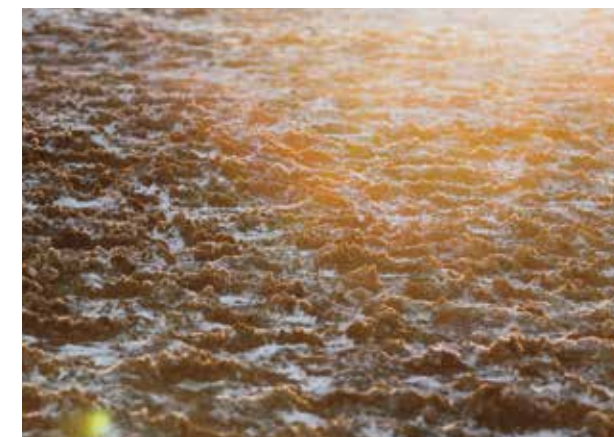
*Occasionally I need a quiet time to listen to my inner voice.
We all need time to tune into ourselves,
in a place away from the usual bustle and noise.*





*I choose to travel to leave sensations behind,
to empty myself, so I'm open to new sounds.*





*A musician I know said silence doesn't exist.
The beat of the heart. The whisper of air moving.
I can hear them here.
With time I forget the dissonance of the city.*





The loneliness of the city and the solitude of the wilderness are very different. Loneliness doesn't inspire, nor does it make us stronger.









*Some people feel relaxed listening to the flow and ebb of waves.
Others meditate to the sound of a vehicle running on a gravel road.*





*Silence is the melody the earth is playing.
The night sky sings along with it,
silent, twinkling and beautiful.*







LEXUS

LX





L E X U S

L X

LX CONCEPT

The flagship Lexus SUV fuses powerful go-anywhere performance with the urban sophistication of peerless luxury.

A masterpiece that stands at the pinnacle of the Lexus SUV line-up, the LX fuses the powerful muscular performance and intelligent packaging worthy of an iconic flagship, with the sublime refinement and finesse that are the distinctive hallmarks of Lexus luxury.

The LX expresses its SUV leadership with the dynamic presence of an authentic 4WD. Built to explore demanding terrain, the strength and 4WD capabilities to confidently tackle tough off-road challenges also contribute to outstanding on-road comfort and driving ease. It exudes urban sophistication with its eye-

catching styling, poised lively performance on the freeway and city streets, and the elegant luxury of refined appointments.

At the heart of this sophisticated fusion of power and pleasure is advanced Lexus technology. The outstanding performance of the V8 engine, 6-speed automatic transmission, and exceptionally strong chassis is harnessed by a human-focused approach to the integration of advanced technology. It assists driving operation in demanding off-road conditions, and provides intuitive control and peace of mind to heighten driving pleasure on the road.





Complementing the exterior styling which projects the LX's flagship status in a glance, the cabin expresses the key concepts of 'powerful', 'advanced' and 'luxurious' in its seamless blend of refined features, contemporary technologies and peerless luxury. It is shaped by a human-oriented focus that embodies the core philosophy of L-finesse.

The thoughtful integration of advanced technologies aims to anticipate and satisfy human emotions, rather than require people to adapt to the technology. The intuitive and natural operation of advanced driving, comfort and entertainment systems, is underpinned by

the separation and consolidation of functionality into operation and display zones, and smooth integration of interaction using the Remote Touch Interface. This human-oriented focus extends to the comfort and convenience of passengers in the rear seats with the provision of an independent entertainment system and independent climate control system.

Occupant comfort, both on-road and off-road, is bolstered by seats designed to distribute pressure, to provide excellent hold while driving over challenging terrain, and exquisite comfort in the city.





L E X U S

L X

DESIGN

The LX affirms its iconic flagship SUV status with a consummate blend of power, elegance and finesse.

In evolving the iconic flagship of Lexus SUVs, the muscular design dynamically expresses the LX theme of 'muscular premium' through the key concepts of 'powerful', 'advanced', 'luxurious' and 'urban sophistication'. The solid athletic presence projects forward power through the signature Lexus spindle grille which is reinforced by solid inner bars. The eye-catching Lexus L-shaped illumination of the triple LED headlamps heightens the immediate identification of the LX as a Lexus. Its unique form leads the eye to a sharp side silhouette with a flowing roofline that exudes a feeling of movement, and around to the thin rear

combination lamps with surface-emitting LEDs set high on the back door to express a feeling of width and power.

In the cabin, the feeling of power is expressed in the strong horizontal lines of the layout that enhance orientation while driving off-road. It is complemented by the beautiful craftsmanship, melding fine leather, rich wood trim, metal-like ornamentation and deep piano black finish to exude a feeling of elegant refinement. The subtle white illumination of the instrumentation and cabin lighting further deepens the luxury experience.

EXTERIOR

The muscular solidity that projects authentic 4WD performance is fused with sophisticated contemporary elegance to define an iconic flagship Lexus SUV.



INTERIOR

Strong horizontal lines infuse the spacious cabin with power, polished by the refined integration of advanced technologies and peerless luxury in keeping with the ultimate Lexus SUV.





LEXUS

LX

OFF-ROAD TECHNOLOGY

The pinnacle of Lexus SUVs generates powerful off-road performance, boosting the pleasure of driving far from the road.

The platform for the LX's resilient off-road performance is built on the core strength and reliability of an exceptional chassis. It is enhanced by advanced technologies to assist driving control, boosting the pleasure of challenging off-road adventures. Multi-terrain Select adjusts multiple vehicle systems to negotiate a range of conditions: Mud & Sand, Loose Rock, Mogul, Rock & Dirt or Rock.

For demanding off-road conditions such as boulders and ruts, 5-speed Crawl Control intelligently adjusts the torque and brakes on each wheel independently, enabling the driver to focus fully on steering. Crawl Control is

complemented by Turn Assist, which assists the making of tighter turns when there is limited space to maneuver, and VFC (Variable Flow Control), an advanced evolution of power steering that enhances steering precision at low speeds.

To help avoid blind spots and give the driver a near 360° view of terrain close to the vehicle, the Multi-terrain Monitor displays views from four cameras strategically positioned around the vehicle. Shift into low range and 4-Wheel AHC (Active Height Control) automatically adjusts the vehicle height in various situations.



01 / Multi-terrain Select

To enhance off-road performance, to suit the terrain and conditions, when Crawl Control is switched off, Multi-terrain Select adjusts multiple vehicle systems to optimize driving characteristics for different road conditions: Mud & Sand for soft slippery uphill; Loose Rock for shifting rock surfaces or slippery uphill; Mogul for very bumpy, mogul-like roads; Rock & Dirt for very bumpy roads with moguls or rocky roads; and Rock for very bumpy and rocky roads. When Crawl Control is engaged, Auto Mode automatically optimizes the A-TRC (Active Traction Control System) control when the accelerator is depressed deep for forceful driving power.

02 / Crawl Control

Crawl Control intelligently controls throttle and braking operation, allowing the driver to concentrate on steering operations at very low speeds in demanding off-road conditions, and to drive with ease on slippery road surfaces, and gravel or mogul covered roads.



03 / Turn Assist

When Crawl Control is engaged, Turn Assist enhances turning performance in response to the driver's operation of the steering wheel while maintaining a constant low speed, reducing the amount of turns required to complete a tight cornering maneuver.

06 / Multi-terrain Monitor

When driving at low speeds, four cameras strategically positioned in the front, sides and rear relay images to the Multi-terrain Monitor, providing a near 360° view of the area around the vehicle during on-road mode, together with a view under the vehicle during off-road mode with the transfer in L4. This helps the driver to spot rocks, ruts, crevices and sheer drops that would otherwise be obscured from view. During off-road driving, a tilt gauge shows the angle the vehicle is tilted, and the front view rotation display rotates the view to help the driver intuitively grasp the road conditions ahead.

04 / VFC (Variable Flow Control)

VFC controls the flow of steering fluid in response to vehicle speed, steering angle and engine rpm, and optimally changes the steering feel appropriate for the driving mode selected in drive mode select. When driving at low speeds off-road, it reduces steering effort and enhances steering precision.

07 / 4-Wheel AHC/AVS

4-Wheel AHC (Active Height Control) provides intelligent control of suspension technology to automatically adjust the ground clearance at each wheel. It continuously makes adjustments in response to the terrain, to help optimize vehicle balance and control while driving off-road. With easy access mode switched on, when the engine is turned off, the vehicle height automatically lowers to make getting out easy. AVS (Adaptive Variable Suspension system) optimally controls the damping force of the shock absorbers on all four wheels in response to driver input and road surface conditions, contributing to excellent ride comfort and handling.

05 / Drive mode select

Drive mode select provides integrated control of multiple systems to let you tune performance to suit your driving style. You can select and change between modes: Normal, Eco, Comfort, Sport S and Sport S+ Modes. In addition, Customize Mode enables drivers to set their preferred settings for the powertrain, chassis and air conditioning.



L E X U S

L X

PERFORMANCE

The LX delivers powerful on-road and off-road performance with the assured smoothness and control worthy of a Lexus flagship SUV.

To create the exceptional performance and ride qualities demanded of a flagship luxury SUV, development of the LX focused on helping drivers to travel on- or off-road with equal composure and pleasure. It begins with an exceptionally strong chassis, made with the extensive use of high-tensile steel to resist the twisting forces of uneven terrain without compromising comfort and refinement. Further contributing to the smooth and quiet ride that is a hallmark of Lexus quality, the frame is designed to separate the suspension from the bodyshell, helping to prevent noise and vibration from entering the cabin.

The 4.5-liter V8 generates the power and torque to confidently tackle the challenges of demanding terrain, and deliver it with a smoothness that takes driving freeways and city streets in easy stride. The engine seamlessly combines with the super intelligent 6-speed automatic transmission to give dynamic, smooth gear changes. Advanced traction, braking and suspension systems further enhance the LX's off-road credentials, while providing the assured poise and control for a sophisticated and comfortable urban driving experience.



01/ Chassis

The immense strength and outstanding rigidity essential to peerless off-road performance are the products of an exceptionally strong frame made with extensive use of high-tensile steel. In addition to outstanding off-road performance, it helps make the LX a robust and safe vehicle.

02 / 4.5-liter V8 engine/6 Speed AT (Automatic Transmission)

A V8 4.5-liter diesel engine offers both a heart-racing power performance along with a level of quietness equal to that of gasoline engines, and a low fuel consumption equivalent to that of 3-liter diesel engines.



03/ Aerodynamics

Various refinements including a large rear spoiler and aero stabilizing fins enhance aerodynamic performance, contributing to excellent straight-line stability and outstanding road holding.

04/ Front and rear suspension

The high-mount, double wishbone front suspension and 4-link rigid axle rear suspension contribute to the excellent handling, stability, and steering response, heightening driving pleasure. Optimizing the individual components including the coil springs, spring rate, and shock absorbers realizes luxurious ride comfort both on-road and off-road.



01 / A-TRC (Active Traction Control System)

A-TRC helps enhance the ability to grip the road, especially when starting off or accelerating on uneven or slippery surfaces. Corrective measures are applied the moment the risk of wheelspin is detected, to help maintain traction.



02 / VSC (Vehicle Stability Control)

VSC helps prevent the loss of vehicle control, particularly when cornering quickly or at the onset of a skid. Selective application of the brakes and/or reducing power helps to enhance stability and reduce vehicle speed.



03 / Multi-terrain ABS with EBD

The Multi-terrain ABS (Anti-lock Brake System) senses driving conditions on dirt or sand, and optimizes ABS control for excellent stopping performance on different road surfaces. EBD (Electronic Brake force Distribution) helps to optimize the application of braking force to each wheel.

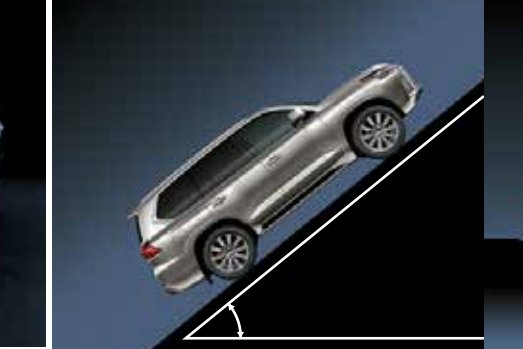


04 / Hill-start Assist Control

When starting off on a slope, Hill-start Assist Control automatically maintains brake pressure to help prevent the vehicle from slipping backwards. It works both on-road and off-road to help reduce driver fatigue.



05 / VGRS (Variable Gear Ratio Steering)



06 / Off-road specifications

VGRS optimally controls the steering gear ratio in response to vehicle speed and steering input, helping to realize excellent maneuverability and stability from low through to high speeds.

- A: Maximum safe angle (45 degrees)
- B: 1. Approach angle (25 degrees)
2. Ramp breakover angle (23 degrees)
3. Departure angle (20 degrees)
- C: 1. Fording depth (700mm)
2. Ground clearance (225mm)
- D: Vehicle turnover limit angle (44 degrees)
- E: Curb ride height (630mm)



L E X U S

L X

FEATURES

The LX's urban sophistication shines through in the Lexus 'Spirit of Hospitality' and refined quality of individual details.

The finesse of the design, functionality and quality finish of each individual feature reveals the peerless luxury that enhances the LX ownership experience. It is immediately recognizable as a Lexus in the distinctive signature spindle grille, L-shaped LED 3-eye projector-type headlamps and rear combination lamps. Satisfaction grows as the LX welcomes you with LED foot area illumination and unlocks the doors when you extend a hand behind a door handle.

The Lexus 'Spirit of Hospitality' deepens in the spacious cabin, in the silky white LED lighting and ambient illumination integrated in the doors. Relaxation comes easily in the exceptional comfort of perforated leather seats,

machine-stitched for precision and finished by a Lexus master craftsman, and the Lexus Climate Concierge that lets you customize your individual temperature and comfort. State-of-the-art entertainment is provided by the Mark Levinson audio system and rear seat entertainment system with independent 11.6 inch displays.

Driving pleasure grows from a feeling of intuitive and responsive control, supported by the separation of operation and display zones, thoughtful layout of switches, and integration of advanced technologies including the colour head-up display, Remote Touch Interface, and multimedia coordination function.



01 / LED 3-eye projector-type headlamps

The next generation design of the distinctive 3-eye, energy-efficient LED lamps, which illuminate in a signature Lexus L-shape, flows seamlessly into the spindle grille to give the LX a bold fresh face.

The L-shape signature is heightened by the integrated surface-emitting LED DRL (Daytime Running Lamp), and LED turn signal lamps.

02 / LED front fog lamps

LED lamps integrated into the front bumper reduce power consumption while providing a bright beam, contributing to excellent visibility for safe driving in low light and at night.

03 / LED rear combination lamps

The Lexus signature is also seen in the thin L-shaped rear combination lamps, positioned high to complement the flowing design and enhance visibility for following vehicles. A sophisticated touch is surface-emitting LEDs in the tail and stop lamps, which appear to float when illuminated.



04 / Moonroof

The electric tilt and slide glass moonroof lets the amount of fresh air and light you desire into the cabin. One-touch operation is quick and convenient, while a sunshade provides shade as required.

06 / Side steps

An example of Lexus hospitality is the thoughtful LED foot area illumination integrated in the bottom of the door mirrors and side steps to welcome and guide your steps as you get in the LX.

05 / Roof rails

The Lexus attention to form and function in every detail shows in the solid aluminum rails that are installed directly on the roof, enhancing the strength of the rails and at the same time smoothly integrating with the flow of the roofline.

07 / Door handles

The refined shape of the door handles is designed to make them easy to grip. For convenience, with the Electronic Key in your pocket or bag, simply touching the door handle locks and extending a hand behind the door handle unlocks the vehicle automatically.



01 / Center console switches

The thoughtful layout of the center console shows the human-oriented focus of L-finesse. Driving-related switches including drive mode select, Crawl Control and VSC are grouped together within easy reach of the driver for intuitive and natural operation, clearly separated from the independent grouping of comfort-focused switches for the driver and front seat passenger. The layout of the switches and cupholders is optimized to enhance ease of use. Sophisticated details such as the metallic finish on control dials including for the audio system, and the use of white illumination for lettering on the switches that complements the subtle cabin lighting, deepen the feeling of luxury.

03 / Cool box

Located in the center console box, the ample storage capacity keeps items nicely cooled on hot days.

02 / EPB (Electric Parking Brake)

The EPB is activated and released using a switch in the center console. It also activates automatically when the shift lever is put in the P position, and releases when the shift lever is changed from P to other positions while depressing the brake pedal.

04 / Lexus Climate Concierge

The Lexus Climate Concierge concept realizes a human-centered approach to individual comfort for the occupants of the front and outboard second row seats. By simply pressing the Climate Concierge switch, the system coordinates with the 4-zone independent temperature controls to automatically control the cabin temperature, as well as the front and outboard second row seat heaters and ventilation that occupants come in direct contact with.



05 / Wireless charger

This thoughtful charging tray in the center cluster enables wireless charging of batteries in Qi-compatible smartphones and electronic devices simply by placing them on the charger tray.

07 / Analog clock

The elegant analog clock embodies Lexus luxury, functionality and simplicity. The solid metal feel of the ring is emphasized by the piano black dial. The surface light emitting 3-dimensional scales and precisely crafted hands provide excellent visibility. A GPS correction function helps check the clock always shows the correct local time.

06 / USB ports/mini-jack/power outlets

Two USB ports, a mini-jack and DC-12V power outlet in the center cluster, and a DC-12V power outlet in the back of the center console box, support the plug-and-play use of electronic devices. There is also an AC-220V power outlet in the side of the luggage space.

08 / Overhead console LED lamp switches

Refined hospitality extends to intuitive operation of the front LED dome lamp and LED map lamps in the overhead console. Touch switches that detect finger proximity turn the appropriate lamp on or off. The lamps emit a sophisticated silky white illumination.



01 / Power back door

The back door features a split design that provides different loading options. For easy access especially when your hands are full, the upper section can be automatically opened or closed using the Electronic Key or a switch located on the instrument panel, and also closed using a switch in the upper section. The lower section opens manually.

03 / Rear seat entertainment system

The entertainment system for second row seat passengers features large high-definition 11.6 inch liquid crystal AI (Artificial Intelligence) displays that automatically optimize the display contrast. The displays can be tilted manually to adjust the individual viewing angle.

02 / Rear door window sunshades

Manual sunshades on the rear door windows give rear seat passengers convenient control over heat and light. Eliminating gaps between the shades and window trim helps to keep the sun from coming directly into the rear seats.

04 / Center armrest

The center armrest in the second row seats is designed to provide supportive comfort, together with additional storage space. It also features climate control switches in fingertip reach, allowing outboard seat passengers to customize settings for their individual comfort. A high contrast liquid crystal display provides clear readouts of settings.



05 / Rear seat entertainment system jacks

The back of the center console box incorporates mini- and HDMI jacks for the rear seat entertainment system, allowing the input of a wide range of content formats. Passengers can enjoy different content on the left and right displays, as well as individual audio volume control when using the two headphone jacks.



06 / Ambient illumination

Ambient illumination integrated into the trim of the front and rear doors provides a soft indirect light, heightening the feeling of sophistication in the cabin with a futuristic luxury touch.

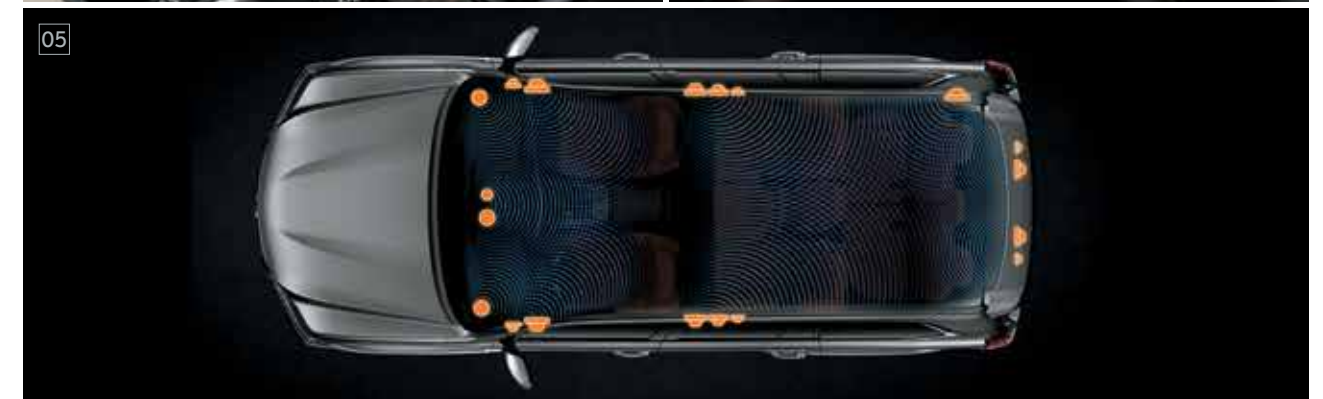


01 / Multimedia coordination function

The LX's triple-linkage multimedia system supports the coordinated display of information on the large 12.3-inch EMV (Electro Multi-Vision) display in the center of the instrument panel, the 4.2-inch colour TFT (Thin Film Transistor) multi-information display in the meters, and a large color head-up display on the lower windshield glass. For convenience, audio system information, incoming mobile calls on the EMV display can also be displayed on the multi-information display, and controlled using switches on the steering wheel.

02 / Meters

The large analog Optitron tachometer and speedometer provide excellent visibility for reading vital information in a glance. The radial dial design, three-dimensional feel of the scale indicators, silver ornamentation of the scale rings and hairline finish of the outer rings exude premium quality.



03 / Remote touch interface

Simple operation that includes enter switches integrated on both sides and a back switch which lets users interact intuitively with the audio systems on the 12.3-inch EMV display.

05 / Mark Levinson audio system

The 19-speaker Mark Levinson Reference Surround Sound System delivers home-theater quality in-car entertainment. A 3-way speaker system in both the front and second row seats creates a 7.1-channel configuration that supports 5.1-channel playback, realizing a three-dimensional sound field with exceptional audio quality.

04 / Colour head-up display

The large color head-up display projects a range of frequently checked driving information and warnings on the lower windshield glass in the driver's line of sight, requiring only a movement of the eyes to see it.



L E X U S

L X

SAFETY

Because peace of mind is at heart of Lexus luxury, an advanced and comprehensive approach to safety forms the core of the LX's flagship SUV status.

To help drivers enjoy the pure driving pleasure of the flagship Lexus SUV, the LX takes a future-focused approach to help assist confident and safe driving. It integrates and coordinates operation of advanced safety technologies to actively assist driving operation, to help avoid collisions and prevent accidents. The LX comes equipped with LED wide angle cornering lamps and the Multi-terrain Monitor to provide additional checks of surroundings while parking.

In the event of an accident, occupant protection is integrated into the LX's core, with the exceptionally strong frame and front sections of the body designed to absorb and evenly distribute crash forces. Inside the cabin, ten SRS (Supplemental Restraint System) airbags help reduce the impact to occupants in a collision.



01 / LED wide-angle cornering lamps

Compact, bright and energy-efficient, the LED wide-angle cornering lamps provide additional illumination in the direction of travel, to the side and above, enhancing pedestrian visibility when turning at intersections.

03 / Cameras

For safe manoeuvres at low speed during off road as well as on road, four cameras are strategically positioned in the radiator grille, door mirrors and back door that provide a near 360° view of the area around the vehicle, together with a view under the vehicle.

02 / SRS airbags

The LX is fitted with ten SRS (Supplemental Restraint System) airbags: dual-stage SRS airbags (Front seats), SRS knee airbags (Front seats), SRS side airbags (Front and outboard second row seats), and SRS curtain shield airbags (Front door, rear door and rear quarter windows).^{*2}

^{*1} The SRS airbags are supplemental devices to be used with the seatbelts. The driver and all passengers in the vehicle must wear their seatbelts properly at all times. Never install a rear-facing CRS (Child Restraint System) on the front passenger's seat. For a forward-facing CRS, it is recommended you use it in the second row seats. Please do not use accessories for the seats which cover the parts where the SRS side airbags should inflate. Such accessories may prevent the SRS side airbags from activating correctly, causing serious injury (Lexus genuine seat covers are specifically designed for models equipped with the SRS side airbags. To find out about availability in your area, please inquire at your local dealer). The photo shows all the SRS airbags activated for display purposes only (the SRS side and curtain shield airbags only inflate on the side of the collision in an actual accident). For details on these and other important safety features, be sure to read the Owner's Manual carefully.



EXTERIOR & INTERIOR
COLOURS

A special range of exterior colours that convey the powerful presence of the flagship Lexus SUV is complemented by luxurious trim combinations featuring sophisticated contrasting tones.



Sonic Titanium <1J7>



White Pearl Crystal Shine <077>



Black <202>



Mercury Gray Mica <1H9>



Starlight Black Glass Flake <217>



Sleek Ecru Metallic <4U7>



Deep Blue Mica <8X5>



18-inch Aluminium Wheels

Code	Exterior	Ornament	Leather	
			Ivory	Black
077	White Pearl CS	Shimamoku (Dark Brown)	●	○
1H9	Mercury Gray MC		○	○
1J7	Sonic Titanium		●	○
202	Black		○	○
217	Starlight Black GF		●	○
4U7	Sleek Ecru ME		○	○
8X5	Deep Blue MC		○	○

● Standard Variants ○ Order Based Variants

<SEMI-ANILINE LEATHER>



Ivory



Black

<TRIM>



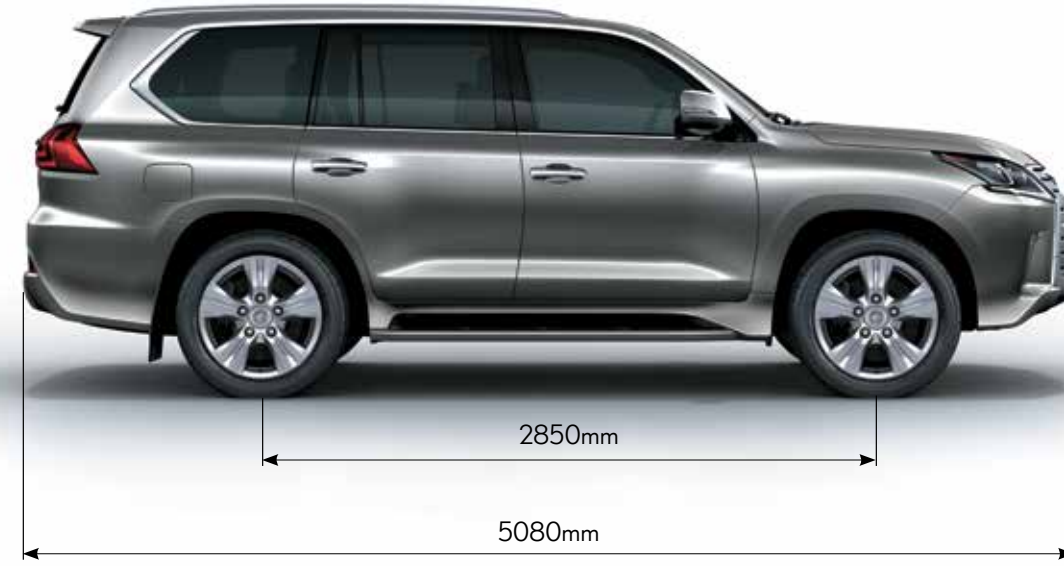
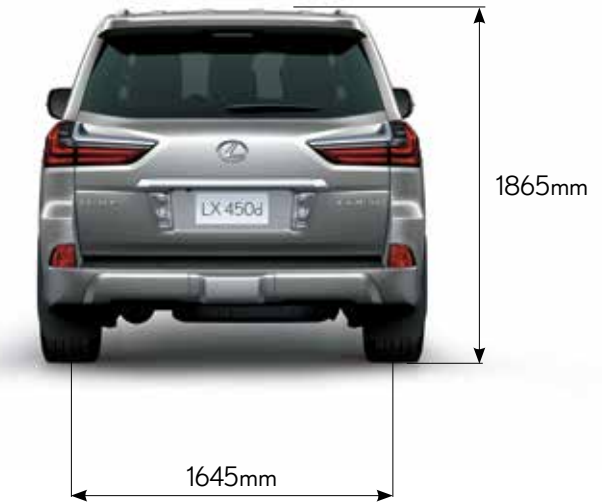
Shimamoku (Dark Brown)

SPECIFICATIONS <LX450d>

DIMENSION & WEIGHT	Overall L x W x H (mm)	5080 x 1980 x 1865
	Wheelbase (mm)	2850
	Tread Front / Rear (mm)	1650 / 1645
	Overhang Front / Rear (mm)	1025 / 1205
	Minimum Turning Radius (m)	5.9
	Ground Clearance (mm)	225
	Fuel Tank Capacity (L)	93
	Seating Capacity	5
ENGINE	Gross Weight (Kg)	3350
	Type	1VD-FTV - 8 Cylinder V Type
	Displacement (cc)	4461
	Max Output	195 kw @ 3400 rpm
PERFORMANCE	Max Torque	650Nm @ 1600-2600 rpm
	Acceleration (0 - 100 kmph in seconds)	8.6
CHASSIS & TRANSMISSION	Fuel Efficiency* (kmpl)	9.6
	Suspension (4 Wheel Active Height Control & Adaptive Variable Suspension)	●
	Brake Front / Rear	Disc Brake - 18" / 17"
	Tire	285 / 60R18
	Transmission	6 Speed AT with AI (Artificial Intelligence) Shift
	Headlamp (LED with Auto Levelling & Cleaner)	●
	Headlamp Automatic High Beam (AHB)	●
	LED Clearance & Cornering Lamp	●
	Light Control System	●
	LED Daytime Running Lights	●
EXTERIOR FEATURES	Door Handle	Illuminated
	High Mount Stop Lamp	●
	Outside Rear View Mirror (Automatic Glare Proof + Side Camera + Memory + Interlocked with Reverse)	●
	Moon Roof	Remote + Jam Protect
	Inside Rear View Mirror (Automatic Day & Night)	●
	Front Seat	Auto Slide
INTERIOR FEATURES	Seat Cover Material	Semi Aniline Leather
	Front Seat Headrest	Active Headrests
	Front Seat Adjuster (Driver 10 Way + Passenger 8 Way with Power)	●
	Seat Heater for Front / Rear	●
	Seat A/C (D + P + Rear Ventilate)	●
	Multi Information Display (4.2 Inch Colour TFT)	●

*ICAT Figure ● Available

COMFORT & CONVENIENCE	Wireless Door Lock (Smart Entry)	●
	Illuminated Entry System (Lounge + Shift + Scuff Plate)	●
	Cruise Control	●
	Drive Mode Select (5 Modes (Normal / Eco / Comfort / Sport S / Sport S+) + Custom Mode)	●
	Steering Column (EPS Tilt + Telescopic With Memory)	●
	Steering Wheel (Leather + Wood + Heater)	●
	Steering (With VGRS (Variable Gear Ratio Steering) + VFC (Variable Flow Control))	●
	Paddle Shift	●
	AVS (TEMS)	●
	Rain Sensing Intermittent Wipers	●
SAFETY & SECURITY	Rear Window Wiper - Single Intermittent	●
	Air Conditioner (Auto 4 Zone)	●
	Electro Multi Vision Display	●
	Audio (Mark Levinson 19 Speakers)	●
	Rear Seat Entertainment (Dual RSE Monitors)	●
	Wireless Charger	●
	Clearance & Back Sonar	●
	Back Guide Monitor With Multi Terrain Monitor - 4 Cameras	●
	Anti Theft System (Immobilizer + Siren + Intrusion Sensor)	●
	ABS	●
SAFETY & SECURITY	Vehicle Stability Control (VSC)	●
	Hill Assist Control (HAC)	●
	Multi Terrain System (MTS) with Active Traction Control System (A-TRC)	●
	Power Door Lock (Auto Speed)	●
	Front Seat Belt (3P ELR (Emergency Locking Retraction) + TR (Tensioner Reducer) Pretensioner & Force Limiter)	●
	Rear Seat Belt (All Seat 3P ELR (Emergency Locking Retraction); Outside Seat - Pretensioner & Force Limiter)	●
	10 Airbags (Front Driver & Passenger, Driver Knee, Front Passenger Cushion, Front Side, Rear Side & Curtain Shield Airbags)	●
	Hazard Warning Indicators	●
	Front Fog Lamp Indicator	●
	Engine Oil Monitor Indicator	●
SAFETY & SECURITY	Head Up Display	●
	Seat Belt Warning (Lamp Front / Rear and Buzzer Front)	●
	Door Ajar Warning / Light Remind Warning / Key Remind Warning	●
	Tire Inflation Pressure Warning	●



Note: Vehicles illustrated, specifications and equipment detailed in this specification sheet may vary. Lexus reserves the right to alter any details of specifications and equipment without notice. Please consult your Lexus Brand Specialist for details.



LEXUS
TAKUMI

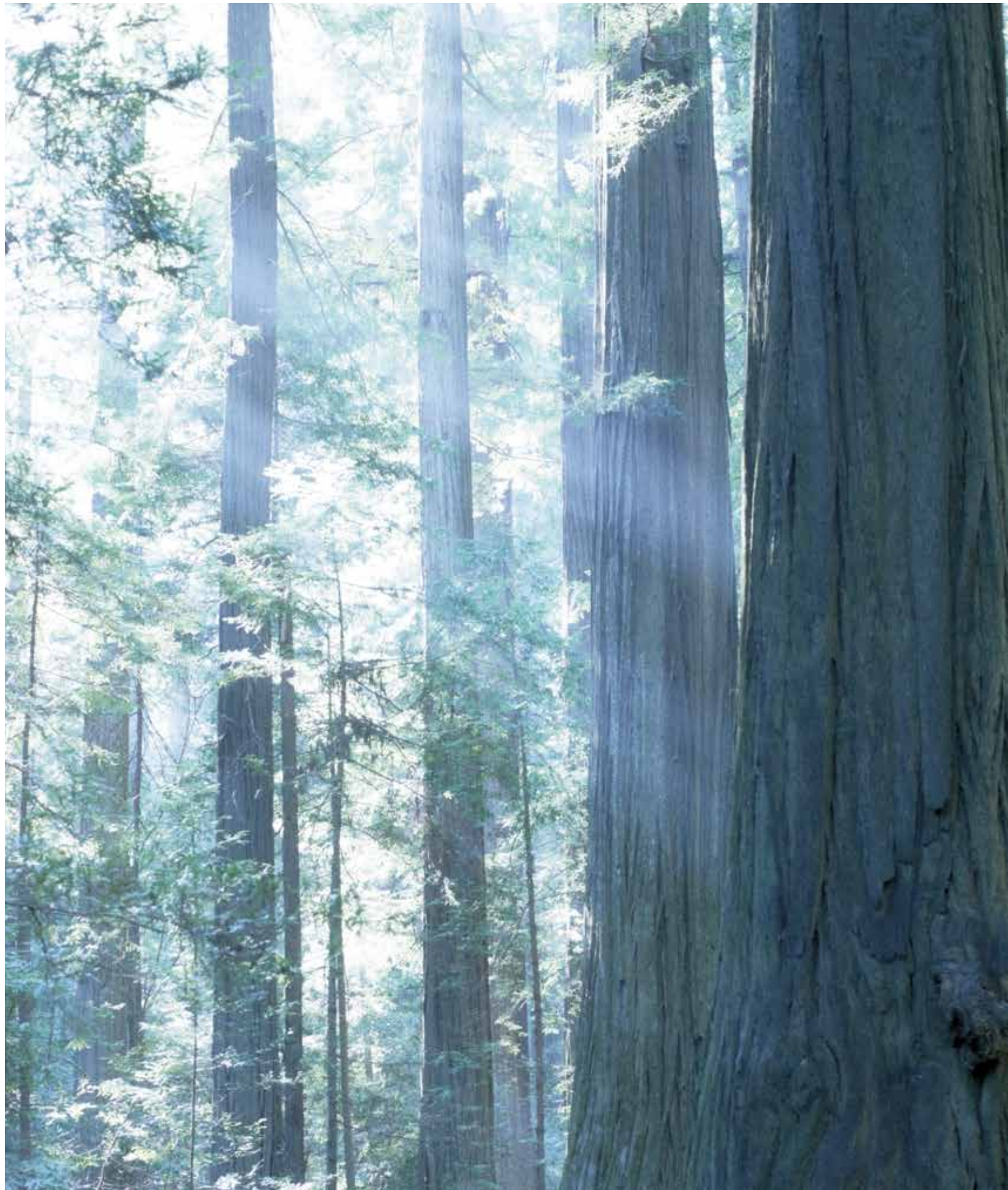
The Lexus pursuit of perfection finds its finest expression in the master craftsmanship of the Takumi.



Every Lexus is based on an uncompromising approach to creating premium automobiles. Inspired by our 'Yet' philosophy, we seek innovation in every facet of engineering through a sophisticated fusion of seemingly incompatible ideas such as 'high performance yet high fuel efficiency'. In addition, unique Lexus styling is born of our L-finesse design language, a fine balance of 'Leading-edge' and 'finesse', which ensures every Lexus is not only captivating and luxurious, but also highly refined. Finally, every new Lexus model is also measured against a set of internal standards covering design, performance, specifications and

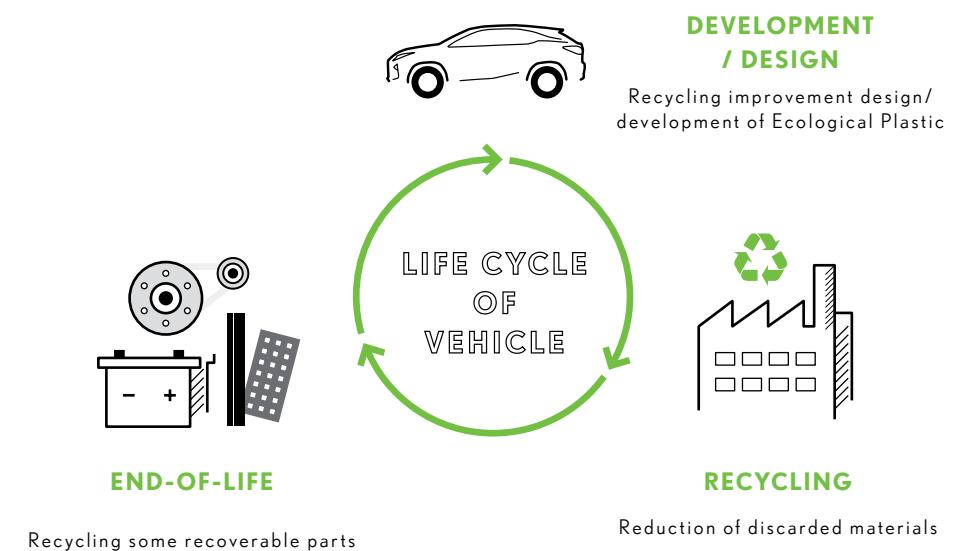
equipment, to ensure it is distinctive and worthy of the Lexus emblem.

This pursuit of perfection is evident at every stage of the manufacturing process. Every Lexus vehicle is created with a masterful skill and attention to detail inspired by both traditional artisanship and state-of-the-art engineering. For example, at the Tahara plant in Japan, precision components made using leading-edge digital technology are assembled and finished by master craftsmen called Takumi, whose technical expertise and sure senses are honed by decades of rigorous experience.



LEXUS
ENVIRONMENT

*Our commitment to the environment
is embedded into all our activities
and vehicles.*



At Lexus, sustainability is an enormous challenge that we gladly accept. We are committed to finding better, more efficient ways to contribute to a healthier planet, leading the industry in better business practices. Our focus on the environment drove our development and global leadership of hybrid luxury vehicles and the knowledge we have gained is applied in all of our vehicles. Our commitment to recovering, recycling and re-using permeates the entire company. To reduce waste to a minimum, we carefully recycle various materials in our offices, factories and sales facilities, reducing CO₂ levels beyond our achievements on the road.

Specific initiatives to enhance the environment include integrating a keen environment-friendly focus on the entire life cycle of each vehicle, from design and production through to the recycling of vehicles at the end-of-life. To reduce CO₂ emissions, at the design stage we specify extensive use of plant-derived plastics for components, instead of petroleum-derived plastics. During production, we make repeated use of reusable items, work hard to efficiently use resources to minimize waste and recycle any waste produced.