



**NBT (BRUNEI) SDN BHD** 4KM, JALAN GADONG, BANDAR SERI BEGAWAN, BE4119. TEL: 244-8688 FAX: 244-8260  
**CUSTOMER RELATIONS DEPARTMENT** TEL: 2427488 EMAIL: [customercare@nbt-brunei.com](mailto:customercare@nbt-brunei.com)

[www.lexus.com.bn](http://www.lexus.com.bn)



# CT 200h



# THE LEXUS PASSION FOR PERFECTION CONTINUES.

From our inception in 1989, everyone of us at Lexus has passionately pursued perfection. Which is why Lexus is renowned over the world for its refined engineering, inspired design and extraordinary luxury. We are constantly challenging ourselves to raise the bar, to exceed the world's expectations, and to define the future of the automotive industry. All to give you a rewarding and unforgettable driving experience every time you get behind the wheel of a Lexus CT 200h. Our engineers and designers anticipate your every need. They then craft vehicles of such style and sophistication that they become the highest expression of engineering excellence. The relentless pursuit of perfection makes for a superior automobile with a reputation for exceptional control and legendary comfort, unlike any before it.



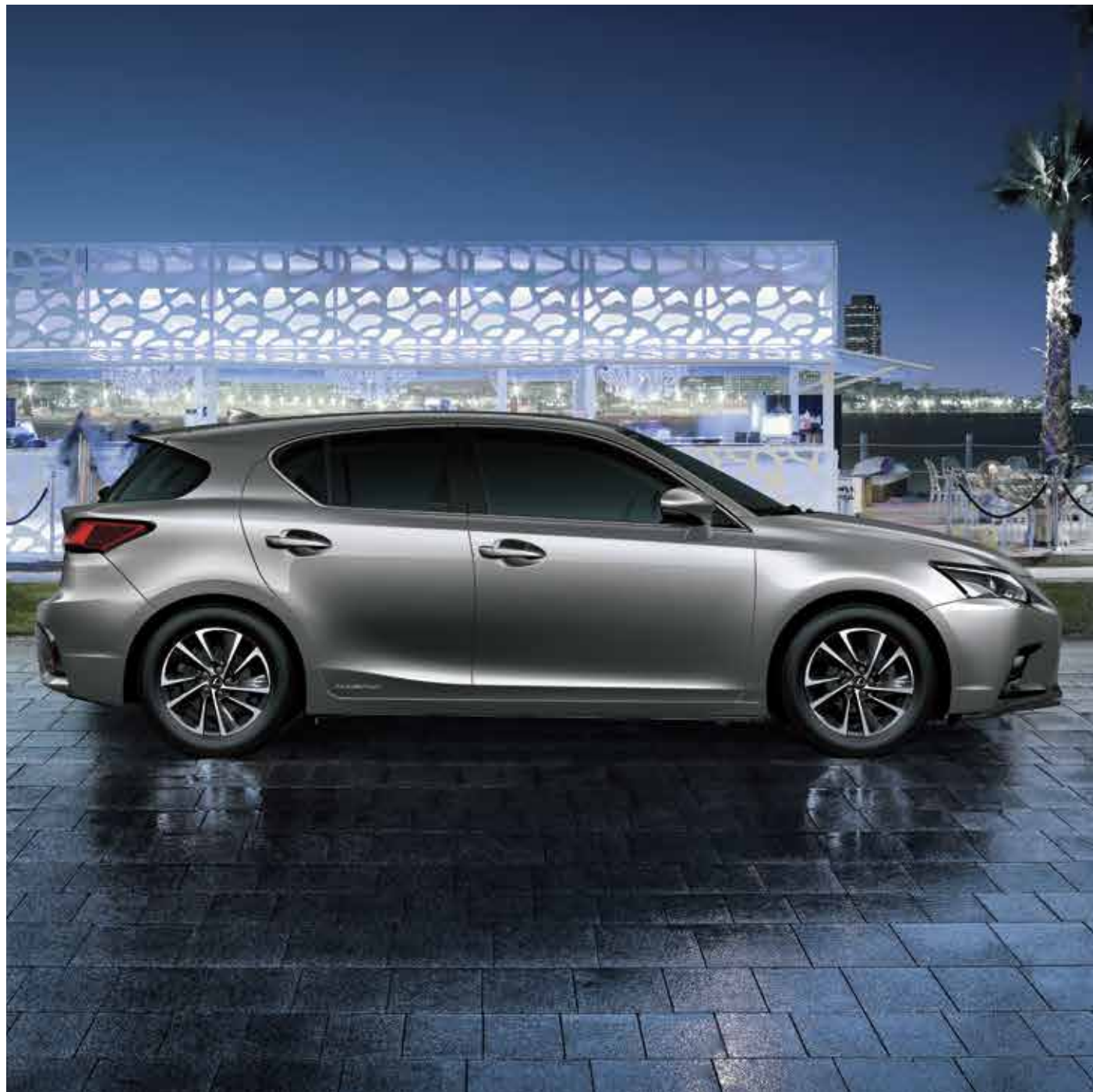
# FUN TIMES AHEAD

Leading-edge construction techniques. State-of-the-art technology. Customized high-rigidity body. Ultra-competent chassis. Impressive driving dynamics. Superb attention to detail. Refined luxury. It must be a Lexus. A joy to behold and a joy to drive, the innovative Lexus CT 200h offers a breathtaking drive and delivers outstanding fuel efficiency. The CT 200h is an unprecedented environmental performer. It is impressively quiet and sumptuously comfortable. Nimble, quick and spacious, the CT 200h is simply incredibly fun to drive.



## PREMIUM COMPACT REINVENTED

Like every Lexus full hybrid developed before it, the new Lexus CT 200h features a unique energy management system. By applying unique in-house engineering solutions and bespoke software tuning, Lexus engineers have enhanced the environmental and driving performance of the Lexus Hybrid Drive system. The Lexus Hybrid Drive in the CT 200h generates significantly less NOx and particulate emissions than an equivalent diesel-powered vehicle. Moreover, when switching to EV mode, it generates zero CO<sub>2</sub>, NOx and particulate emissions. Further enhancing the CT 200h's outstanding green credentials, there are numerous additional energy saving and environmentally conscious measures.



## MAXIMIZED PERFORMANCE

With its precise engineering and agility, Lexus CT is always a thrill to drive, regardless of whether you're cruising on smooth highroads, or the roughest gravel. It boasts a strong chassis, low centre of-gravity and a high-rigidity with lightweight body – all to put responsive and precise control into your hands. Add all that to a double wishbone suspension and Electric Power Steering, and you get a car that puts performance on the forefront, guiding you through your daily life with style and energy. Give the Lexus CT200h room to play and it will show you the full extent of its capabilities. Wielding a MacPherson strut suspension in the front and a fully independent double-wishbone suspension in the rear, the CT delivers surefooted handling for an effortless drive. The performance dampers positioned in the front and rear of the CT200h provides additional rigidity to the chassis while minimizing vibrations. The result: enhanced handling, a more linear steering feel and a comfortable, invigorating ride.





## SWITCH SIDES

Appeal to both sides of you with the CT 200h. Featuring a Drive Mode Select switch on the centre console that allows you to easily go from either a dynamic or relaxing driving mode, each mode denoted by the colour of the lights within the cabin.



### ECO / EV MODE: RELAXING ENVIRONMENTAL PERFORMANCE

For a smooth, efficient drive, ECO and NORMAL modes use the petrol engine to achieve higher speeds and blend in electric power, with air conditioning power lowered to increase economy in ECO mode. Select EV mode and Lexus Hybrid Drive provides an almost silent drive up to 45 km/h, using no petrol and emitting zero CO<sub>2</sub> or NO<sub>x</sub>. In EV, ECO and NORMAL modes the instruments and cabin lighting take on a blue colour, while the ecometer helps you drive more efficiently.

### SPORT MODE: EXCITING PRECISION HANDLING

If you're in the mood for a dynamic drive, select SPORT mode and the CT 200h immediately retunes the throttle input for more direct acceleration, increasing battery power from 500 to 650 volts. SPORT mode also adjusts the Electric Power Steering, Vehicle Stability Control and Traction Control for a more lively drive. You'll also notice how the ecometer changes into a tachometer to display engine revs – and how the instruments and overhead cabin lighting turn a sporty red.





## STYLISH YET INTUITIVE.

Inside, everything has been perfectly designed with the driver in mind. Combining functionality with aesthetics, the shape and form of each component has been carefully crafted to appeal to the driver's refined sense of taste.

The sleek asymmetrical instrument panel flows along simple, straight lines to convey a reassuring feeling of extra width, while the low driving position creates a spacious cabin and excellent visibility that whets your appetite for the drive ahead.

The luxurious handcrafted interior offers serenity through the remarkable Lexus quietness and a real organic feel with carved and polished metallic accents, plus generously bound leather.

<sup>1</sup> Actual value is subject to change.



## UNCOMPROMISED SPACE

As well as comfortably accommodating four passengers in its spacious and roomy cabin, the 375-litre luggage capacity allows ample space for a set of golf clubs in the back. With 60:40 split rear seats folded flat, this increases to an impressive 985 litres. The CT 200h is designed according to approximately 500 specific developments standards, known as 'Lexus MUSTs' – a set of strict guidelines that raise the dynamic and environmental performance of the new fully hybrid.

The Lexus MUSTs set the NVH standards to achieve the levels of quietness and durability expected of every Lexus. They also apply to other features, such as the vehicle's appearance, tactile quality, sound quality, and the performance and sensitivity of controls.





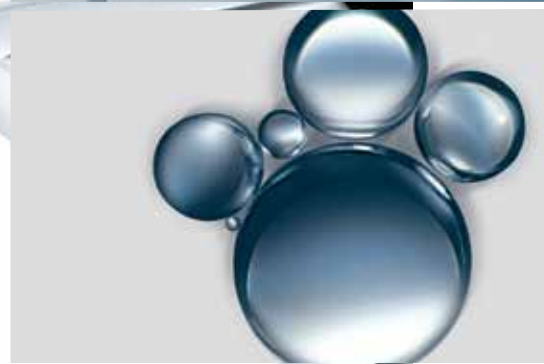
# A UNIQUE HYBRID EXPERIENCE

Lexus Hybrid Drive has 4 unique aspects to lend to its signature finesse.



## Acceleration Beyond Imagination

The Lexus Hybrid Drive provides a prime demonstration of a powerful acceleration with an engine system that operates with unsurpassed smoothness when driving at mid and high-speeds. Combining an electric motor and petrol engine with both port and direct fuel injection, the CT 200h accelerates seamlessly from 0 - 100 km/h in 10.3 seconds and reaches a maximum speed of 180 km/h.



## Optimum Fuel Saving

Lexus Hybrid Drive technology is the perfect fusion of the electric motor and a finely tuned 1.8 litre Atkinson cycle petrol engine. It effectively reduces fuel consumption, producing performance that is unlike any before it, with a combined cycle figure of 3.8 l/100 km\*.

\*Preliminary



## Ultra-Low Emissions

The CT 200h can perform with a very high level of clean emissions in compliance with the world's strictest standards, EURO V standard. It is capable of delivering supreme engine power while its carbon emissions are a mere CO<sub>2</sub> 87g/km. Indeed, the CT 200h carves a fine balance between care for the environment and technological breakthrough.



## A Smoother Driving Experience

The impressive stability control of the CT 200h lies in its revolutionary Electronically-Controlled Variable Transmission (E-CVT) and petrol-electric Hybrid Drive system that allow the powerful motor generators to work seamlessly together. For an effortless driving experience without limits, you don't have to look any further.

# POWER AND INTELLIGENCE

For astonishingly smooth performance and low CO<sub>2</sub> emissions of just 87g/km, the CT 200h orchestrates a combination of super-efficient 1.8-litre petrol engine, high-output electric motor, powerful compact battery, seamless hybrid transmission and power control unit. Working seamlessly together, two power sources provide a combined output of 136 DIN hp.



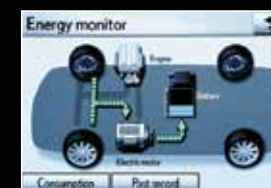
## Advanced Compact Hybrid Battery

Lexus Hybrid Drive features a high-output, nickel metal hydride 202V battery controlled by sophisticated energy-management software. Located under the luggage area, without compromising interior space, the battery is constantly recharged by the vehicle's operation and requires no external charging.



## Exhaust Heat Recovery System

This compact unit helps warm up the 1.8-litre engine more quickly. Fitted to the exhaust system between the engine and catalytic converter, it allows the engine to switch off earlier and more often in cooler weather, leading to a reduction in fuel consumption and emissions.



## Regenerative Braking

The electric motor acts as a high-output generator especially when braking and cruising, thus recovering kinetic energy as electrical energy. This charges the hybrid battery for use later when accelerating, or driving in EV mode.



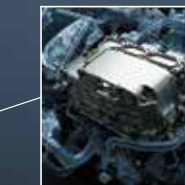
## 1.8-litre and 4-Cylinder Petrol Engine

Featuring Start/Stop capability, Exhaust Heat Recovery and Variable Valve Timing-intelligent technologies, this ultra-smooth 'Atkinson Cycle' petrol engine delivers exceptional fuel efficiency and significantly reduced emissions.



## Hybrid Transmission (E-CVT)

Lexus Hybrid Drive's electric motor, generator and power split mechanism are all housed in the Hybrid Transmission. Here, the two forces of Full Hybrid - electrical and mechanical power - are combined using infinitely variable gear ratios to produce seamless performance.



## High-Output Electric Motor

The 82 DIN hp electric motor works together with the petrol engine to boost acceleration, and is the sole source of power in EV mode. Generating up to 207 Nm of instantaneous and linear torque, the motor is far more powerful than that of mild hybrids.



## Power Control Unit

Located in the engine compartment, the groundbreaking Power Control Unit is the brain of Lexus Hybrid Drive and controls the allocation of power resources to ensure optimum efficiency at all times.



## Drive Mode Selector

The CT 200h has four selectable drive modes. EV mode provides whisper quiet, emission-free progress purely using electric power. ECO and NORMAL modes combine petrol and electric power for relaxed, higher speed driving. SPORT mode delivers a more dynamic driving experience.

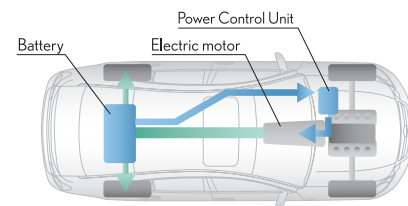


# PERFECTING PERFORMANCE

## THE POWER OF **h** LEXUS FULL HYBRIDS



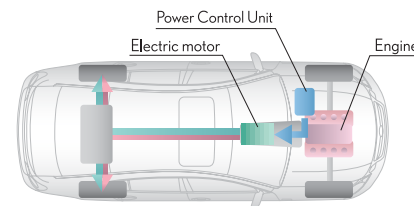
### START UP, DRIVING OFF



When starting off, the electric motor can propel the CT 200h up to 45 km/h, with electric power being supplied from the hybrid battery. At this point the vehicle is almost silent, uses no petrol and produces zero emissions.



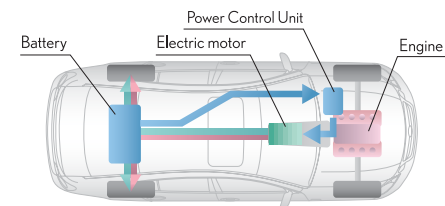
### NORMAL DRIVING CONDITIONS



At speeds above 45 km/h the advanced petrol engine cuts in, almost silently, but still receives assistance from the electric motor when required. Through the near perfect distribution of its dual power sources, the CT 200h provides exceptional driving comfort – together with lower emissions and fuel consumption.



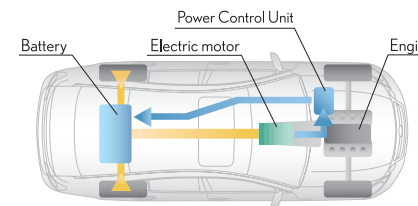
### FULL THROTTLE ACCELERATION



Accelerate powerfully and the 82 DIN hp electric motor instantaneously supplements the 1.8-litre petrol engine. This delivers a surge of torque to provide powerful linear acceleration precisely when you need it.



### DECELERATION, STOPPING, BRAKING



When decelerating or coming to a halt, the petrol engine turns off, cutting emissions to zero. Brake, or take your foot off the accelerator, and regenerative braking harnesses the kinetic energy lost in other cars. It converts this into electrical energy for storage in the hybrid battery, which is one reason why you never need to recharge a Lexus Full Hybrid.

*The above are basic characteristics of Lexus Hybrid Drive Technology. Actual driving experience may vary.*

## HIGHLIGHTS



### AUTO FOLDING & DIMMING

The door mirror housings can be folded in to help the driver negotiate narrow spaces and, when parked, there is less risk of damage. The mirrors also dim automatically to prevent the driver from being dazzled by following traffic.



### RAIN SENSING WIPERS

A sensor placed above the rear view mirror detects rainfall, and its intensity, on the windscreen. The wipers are activated automatically as soon as the sensor determines that there is sufficient rainwater to clear.



### REAR SPOILER

The rear spoiler manages airflow around the CT 200h and minimizes turbulence and wind noise. The integral high brake light features active brake light technology to warn following traffic of emergency braking.



### 16" ALLOY WHEELS

The door mirror housings can be folded in to help the driver negotiate narrow spaces and, when parked, there is less risk of damage. The mirrors also dim automatically to prevent the driver from being dazzled by following traffic.



### REAR SEAT COMFORT

The long wheelbase, wide stance and extended roof line ensures ample leg, elbow and head room for all rear passengers. The outer seats are contoured for comfort, while all seats have a 3-point seatbelt.



### USB PORT AND AUX SOCKET

The USB provides a connection for a variety of multi-media devices, including an iPod® or MP3 player. Once connected, favourite tracks can be played and listened to through the speaker system or headphones.

# HIGHLIGHTS



## OPTITRON INSTRUMENTATION

Crisp, white instrumentation with anti-glare technology ensures that the main vehicle data is readily assimilated by the driver. The background lighting can switch from blue to red, with the ecometer being replaced by a tachometer.



## PARKING MIRROR

With reverse gear engaged, live images of the area behind the CT 200h appear in a section of the rear view mirror. The images are relayed via a miniature camera located in the tailgate. So reversing into parking spaces is much easier.



## ELECTRONIC BRAKE-FORCE DISTRIBUTION / BRAKE ASSIST SYSTEM

Electronic Brake-force Distribution works with ABS to ensure optimum brake-force is applied to each wheel. And the Brake Assist System increases brake-force automatically during emergency braking.



## HILL-START ASSIST CONTROL

Hill-start Assist Control maintains brake pressure to help prevent the CT 200h from moving backwards when starting off on a slope. In addition to reducing driver fatigue, Hill-start Assist Control also minimises wheel-spin on slippery inclines.



## TRACTION CONTROL (TRC)

TRC increases the CT 200h's ability to grip the road, especially when starting off or accelerating on uneven or slippery surfaces. Corrective measures are applied the moment the risk of wheel-spin is detected, thereby maintaining traction.



## VEHICLE STABILITY CONTROL (VSC)

VSC helps prevent the loss of vehicle control, particularly when cornering quickly or at the onset of a skid. Stability is improved and vehicle speed reduced by the selective application of brakes and, or, power reduction.

# HIGHLIGHTS



## EIGHT AIRBAGS

The CT 200h is equipped with eight airbags and front seat-belt pre-tensioners. In a collision, impact intensity sensors activate front dual-stage driver/passenger airbags and side airbags accordingly. Front seat passengers also benefit from knee airbags, while curtain shield airbags run the full length of the side windows.



## TWIN-CHAMBER PASSENGER AIRBAG

Crash tests show that the front passenger seat travels further than the driver before hitting the front airbag. In order to safely 'catch' the passenger in collision, an innovative twin-chamber airbag is fitted.



## WHIPLASH INJURY LESSENING SEATS

The front seat and headrest designs minimise whiplash-inducing neck motion in a rear impact. Reinforced side frames let the torso sink into the seat's back, while the forward placement of the headrest supports the head more effectively.



## PASSENGER SAFETY CELL

For added safety, the CT 200h has a very strong, rigid, impact-absorbing body shell and passenger cell. The car's main pillars are specially reinforced and high tensile steel has been used strategically throughout. Crumple zones front and rear absorb energy in a crash, as does the steering column, which is engineered to collapse on impact.



## SIDE IMPACT PROTECTION

All occupants are well protected from side impacts. Strengthened A and B-pillars (at the windscreen and in the middle of the car), floor reinforcements and side impact beams absorb and distribute collision energy away from the driver and passengers..



## PEDESTRIAN PROTECTION

The CT200h's bonnet is optimised to ensure better energy absorption in a collision with a pedestrian. In addition, the windscreen wiper area is designed to help reduce pedestrian injuries in an accident.



EXTERIOR COLOURS



SONIC QUARTZ (085)



MERCURY GREY MICA (1H9)



SONIC TITANIUM (1J7 )



AMBER CRYSTAL SHINE (4X2)



BLACK (212)



GRAPHITE BLACK GLASS FLAKE (223)



RED MICA CRYSTAL SHINE (3R1)



MADDERA RED (3T2)



SPARKLING METEOR METALLIC (8X9)



DEEP BLUR MICA (8X5)

TWO TONE COLOURS



SONIC QUARTZ / SONIC TITANIUM (2QB)



RED MICA CRYSTAL SHINE / MECURY GREY (2QA)



GRAPHITE BLACK / SONIC TITANIUM (2PZ)

*Note: Vehicles pictured and specifications detailed in this catalogue may vary from models and equipment may vary.  
Please enquire with our Sales Consultants for the exact colour availability.  
\* Vehicle body colour, interior colours and features might differ slightly from the printed photos in this catalogue.*

INTERIOR FINISH



CHEATEAU (02)



BLACK (22)



RED (36)

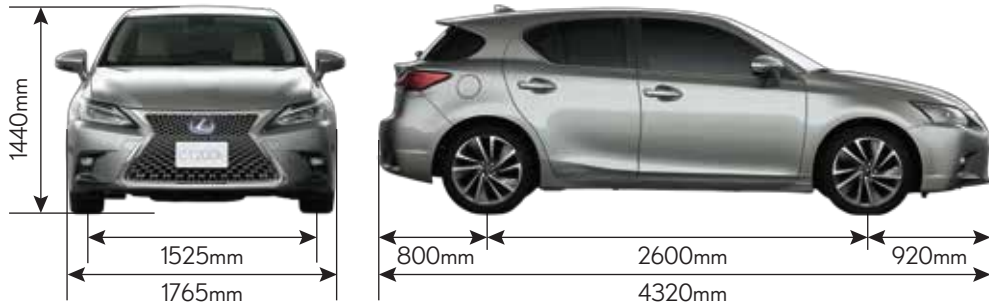


DK. CAMEL (45)



SPECIFICATION CHART

	CT 200 h
ENGINE	
Engine Type	4 Cylinder in-line 16-valve, DOHC with VVT-i
Displacement	1798 cc
Bore and Stroke	80.5 x 88.3 mm
Compression Ratio	13.0 : 1
Fuel System	Intake Port (Multi-point)
Max. Output	73 kW / 5200 rpm
Max. Torque	142 Nm / 4000 rpm
Combined Horsepower	134 hp
CHASSIS	
Transmission Type	CVT
Brake Type	
Front	Ventilated disc with floating caliper 1-cylinder
Rear	Solid disc with floating caliper 1-cylinder
Suspension Type	
Front	MacPherson Strut
Rear	Double Wishbone
Steering System	Rack & Pinion
PERFORMANCE	
Max. Speed	180 km/h
Acceleration (0 – 100km/h)	10.3 sec
Min. Turning Radius (Tire)	5.2 m



	CT 200 h
MEASUREMENTS	
Overall	
Length	4320 mm
Width	1765 mm
Height	1440 mm
Wheelbase	2600 mm
Tread	
Front	1525 mm
Rear	1520 mm
Overhang	
Front	920 mm
Rear	800 mm
Curb Weight	1410 kg
Gross Vehicle Weight	1845 kg
Fuel Tank Capacity	65 L
MOTOR GENERATOR	
Front Motors [MG1]	Generator, Engine Starter
Max. System Voltage*	650V
Motor Generator 2 [MG2]	
Function	Drive Front Wheels
Max. Output	60kW
Max. Torque	207Nm
Max. System Voltage*	650
System Performance	650V
Max. System Output**	100kW (134hp)
Max. System Output**	650V
BATTERY	
Type	Nickel-Metal Hydride
Cells	168 cells
Nominal Voltage	201.6V

*\*1 The combined total power of the engine and electric motor (using the battery) exhibited as a hybrid system.*

*\*Lexus reserves the right to alter any details of specifications and equipment without notice. Details of specifications and equipment are also subject to change to suit local conditions and requirements. Please enquire with our sales consultants for details.*

STANDARD EQUIPMENT

	CT 200 h
SAFETY & HANDLING	
SRS Air Bag System	
Driver and Front Passenger Front Airbags	•
Driver and Front Passenger Knee Airbags	•
Driver and Front Passenger Side Airbags	•
Front and Rear Curtain Shield Airbags	•
Headlamp	
Light Emitting Diode (LED)	•
Daytime Running Lamps (LED)	•
Leveling	•
Cleaner	•
Clearance and Back Sensors	Reverse sensors
Anti-lock Braking System (ABS) with Brake Assist	•
Electronic Brake Force Distribution (EBD)	•
Traction Control System (TRC)	•
Vehicle Stability Control System (VSC)	•
Hill-start Assist Control	•
High Rigid and Rust Resistant Body Structure	•
Child Restraint System	•
3-point Emergency Locking Retractor (ELR) Seatbelts with Pretensioner & Force Limiter Structure	•
One-touch Power Windows with Jam Protection	•
Door Mirror with Side Turn Signal Lamp	•
Child Restraint System	•
EQUIPMENT	
Anti-theft System	•
Illuminated Entry System	•
Side, Rear Glass and Rear Windscreen with UV-reduction	•
Power Door Lock with speed detecting lock function	•
Front and Rear Fog Lamp	•
Multi-Information Display	•
Rear integrated roof spoiler	•
Dual Driving Mode Switch (Eco/Sport)	•

	CT 200 h
ON-BOARD TECHNOLOGY	
SMART Key Entry System	•
SMART Start Ignition	•
8-inch High Resolution Full Colour Display	•
Remote Touch Interface	•
Drive Mode Select Switch ( ECO / NORMAL / SPORT)	•
Clean Air Filter	•
Automatic Dual Zone Climate Control System	•
Outside Temperature Gauge	•
Analogue Clock	•
COMFORT	
Factory-fitted Fabric Seats	•
6-way (driver) and 4-way (front passenger) manual seat adjuster	•
Foldable Rear Seats	•
Split rear seats (60:40)	•
Steering Wheel (Leather with Audio Switches)	•
Manual-tilt & telescope steering column	•
Luggage space - 60:40 push-open deck undertray	•
Deodorant Air Filter to remove dust, pollen and bad colour	•
AUDIO	
Lexus Premium Audi System with 6 Speaker	•
AM/FM tuner, CD	•
USB Terminal	•
iPod / Cellphone holder	•
WHEELS AND TYRES	
205 / 55R16	•

v17.1