



GS

GS Turbo / GS350 / GS Hybrid





GS	» P2
EXCEEDING EXPECTATIONS	» P20
TAKUMI	» P52
ENVIRONMENT	» P56
COLOURS	» P58
SPECIFICATIONS	» P66
FEATURES	» P67

"For the GS, we reappraised everything about how a luxury sedan looks and drives. For instance, central to the stunning L-finesse design concept is a bold spindle grille that has, quite literally, changed the face of Lexus. Then we created a rigid body, reengineered the suspension, and developed innovative stability systems for an exciting yet refined driving experience. In the cabin, we integrated various advanced technologies to provide outstanding comfort and pleasure for every drive."

TORU KATO, GSEmeritus Chief Engineer





*Designed for the eye, engineered for the heart:
The GS signals an ambitious foray into the world of expressive luxury.*

*Place your best foot forward: Embrace yourself as you thrill
and enthral the power of the prowess within.*





Living space from within: Indulge in a realm that is at once generous in dimension and welcoming in execution.

Arrive with presence: Make an entrance and captivate the attention of the relentless with the GS' muscular definition.



*Made for the road, tailored for you: A progressive fusion of emotive style
and functionality is primed to ignite your senses.*





Progress with confidence: A catalyst based on seamless blend of contemporary style, stirring performance and understated sophistication.



LEXUS

GS



1	GS CONCEPT	» P20
2	DESIGN	» P26
3	FEATURES	» P30
4	PERFORMANCE	» P38
5	SAFETY	» P44
6	F SPORT	» P48



EXCEEDING EXPECTATIONS



GS CONCEPT

*More than 1,500 engineers and craftsmen over 2,000 working days.
Tested over 1,000,000 miles. Built with a single ambition -
Go beyond convention and engineer with passion.*

It draws you in at first glance. As you get closer, it continues to inspire and raise expectations. This is the Lexus GS. Witness the refinement. Feel the passion.

Every once in a while, physics and beauty comes together to redefine possibilities and reignite our imaginations.

And every so often, a new technology comes along, proving once and for all that possessing an earth-friendly psyche and cutting-edge performance can be one and the same.

This forward-thinking industry-changer comes in three variants - GS Turbo, GS 350 and GS Hybrid.

With its cutting-edge mechanisms that combine different drive mode selections, re-engineered handling systems, unrivalled audio technology, and aggressive torque and speeds, the GS is a high-performing vehicle that'll truly bring you to the top of your game.





With all functional driving components consolidated at your fingertips, the interior combines outstanding ergonomics with advanced Human Machine Interface technologies. So comfortable is the ride, that you will not notice the miles fly by.



DESIGN THAT EPITOMISES LUXURY



DESIGN

*Some art hangs on the walls
while some can be found in garages.*

At Lexus, we don't just design cars that look pretty. The design of these vehicles also needs to deliver on performance, and exude a sense of subtle flair and individualism. Which is why we are proud to showcase the next generation L-finesse - a new Lexus design philosophy that lets the GS series exude a sporty, powerful exterior with a commanding road presence.

Through this philosophy, the new GS features a dramatic, purposeful spindle grille as the focal point, allowing you to arrive with presence. L-shaped LED 3-eye projector-type headlamps emit a subtle Lexus

signature when illuminated and help to enhance driver vision, while the LED Daytime Running Lamp (DRL) creates a distinctive aura.

In profile, the car's muscular stance contrasts its lean waistline and long streamlined body, to shape a unique presence with a spacious cabin for up to five occupants.

Not just a pretty face, the unparalleled beauty of the GS is underpinned by functionality. With aero-stabilizing fins on the rear lamps and floor under covers, the vehicle flaunts improved aerodynamics and stability.



EXTERIOR

Distinctive lines blend with sculpted curves to emanate an aggressive and bold spirit.



INTERIOR

The amalgamation of style and refinement accentuates the dynamic expression of athletic strength and sporty ambience of the interior.





THE POWER OF INTUITION



FEATURES

The GS anticipates the future with refined features that blend advanced technology and indecisive design with Lexus quality.

High performance driving is not without its comforts, especially since the new GS is designed for the bold pursuit of pleasure and style.

Special attention has been paid to create the ideal seating position to reduce driving stress and fatigue. Several details have been included in the new GS. Like positioning the steering wheel column at an angle that facilitates a relaxed grip and smooth steering inputs.

The sophisticated cabin with thoughtful and refined features cocoons you in an island of calm, and with the dazzling array of advanced technologies available at your fingertips, you will easily be able to hear your heart beat.

Add to that, the tailored bonnet visibility range lets you readily establish vehicle extremities, making it easier to manoeuvre in confined spaces. In the low-set position of the driver's seat, you'll enjoy the superlative comfort, better forward visibility and overall command of the road.



01 / Bi-LED triple 'L' headlamps

The eye-catching design of the 3-eye, energy-efficient LED lamps creates an L-shaped illumination. Together with the distinctive arrowhead shape of the LED DRL*, the GS is immediately recognizable as a Lexus, both day and night. Available on GS Luxury and F Sport grades.

03 / LED front fog lamps

LED lamps integrated into the front bumper reduce power consumption while providing a bright beam, contributing to excellent visibility for safe driving in low light and at night.

02 / Bi-LED headlamps

The single Bi-LED headlamps switch between low and high beam to generate a bright light for excellent visibility at night, while reducing power consumption. The arrowhead-shaped LED DRL* emits a subtle Lexus signature. Available on GS Executive grade.

04 / LED rear lamps/ active brake lamps

The LED rear combination lamps illuminate in an L-shape array symbolizing Lexus, and feature integrated aero stabilizing fins to enhance handling stability. When braking in an emergency, the active brake lamps, including the LED high-mount stop lamp, pulse rapidly to provide an effective warning to following vehicles.

* DRL: Daytime Running Lamps.



01 / Calf support

The front passenger's seat has an extending seat cushion to provide additional calf support. It automatically retracts when the passenger gets in and out of the car. Available on GS Luxury grade.

03/ Electric seat adjustment

The front seats feature 10-way adjustments including 2-way lumbar support, or 18-way including 4-way lumbar.

02 / Ventilated seats

The driver and front seat passenger can individually ventilate their seat as desired using the conveniently located switches.

04 / Rear seat control

Available in the GS Turbo Luxury, GS350 and GS Hybrid, the seatback, cushion and side cushion of the outboard rear seats can be heated. The control panel in the rear centre armrest also allows individuals to control the rear climate zone.



01 / Electro Multi-Vision (EMV) display
 The GS takes display technology to the next level. It is equipped with a high-resolution 12.3-inch EMV display. These displays allow for usage of various applications for an efficient drive. Available on GS 350 and GS Hybrid.

03 / Lexus navigation system
 With crisp and clear graphics and an array of mapping options, the navigation is intuitive to use, reaching swiftly to user input.

02 / Remote Touch Interface (RTI)
 The RTI lets users interact intuitively with the central EMV display. Ergonomically designed, it is situated close at hand and is as easy to use as a computer mouse.

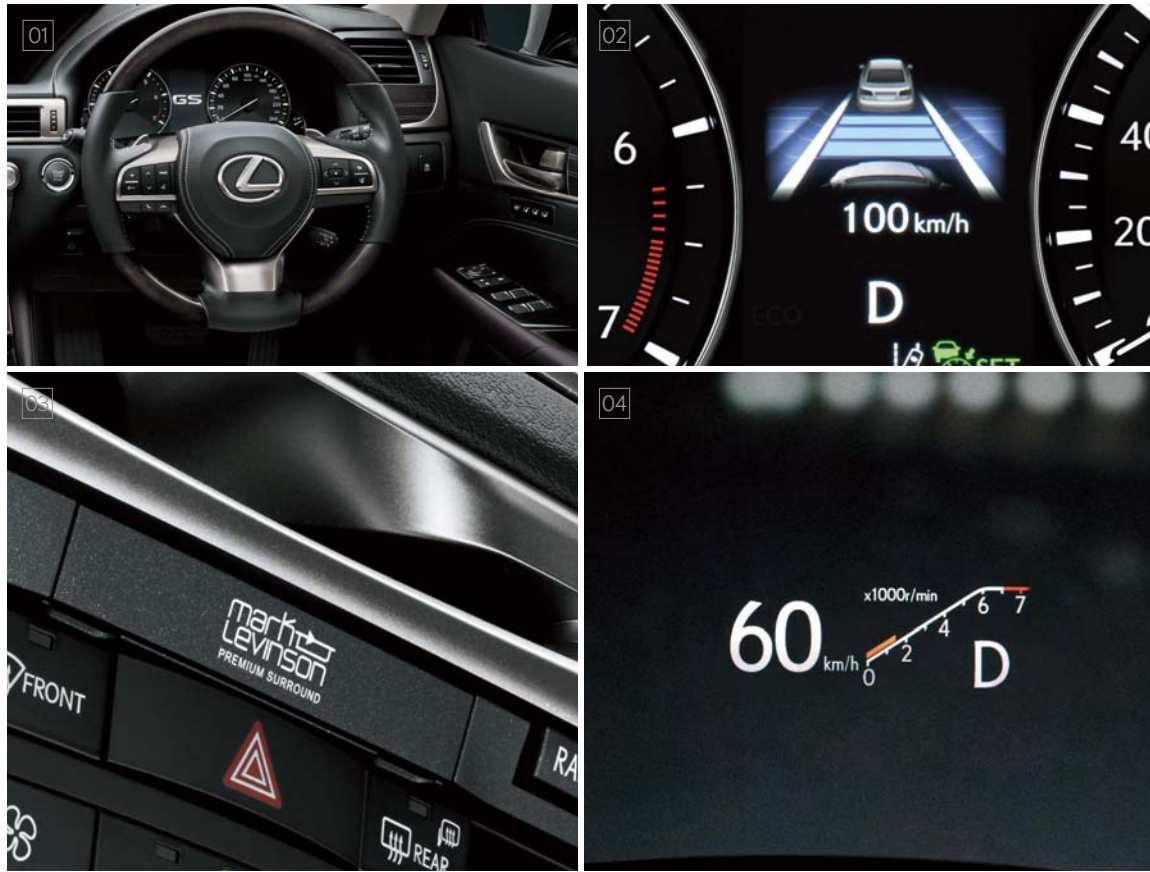
04 / S-FLOW control air conditioning with nanoe
 The powerful yet energy efficient S-FLOW control provides climate control only to the zones that are occupied. Another climate control innovation is nanoe technology that releases microscopic, negatively charged nanoe particles in the cabin, which purifies the cabin air and effectively deodorizes the seats and upholstery computer mouse.



01 / Luggage space
 The trunk space in the GS provides easy access to ample room to accommodate 4 sets of golf clubs.

03 / LED interior illumination system
 The interior cabin lighting and instrumentation colour is uniformly white. LEDs are used extensively, including for the main cabin, map and reading lamps, as well as to illuminate the door handles. The subtle design of the innovative surface-emitting LED main cabin lamp contributes to Lexus hospitality.

02 / Rear sunshades
 With smooth and quiet operation, the power rear sunshade has outstanding light filtering qualities. Together with the manual rear door window sunshades, they provide excellent shade and are unobtrusive when not in use.



01 / Steering wheel controls

The ergonomically designed steering wheel has built-in switches so the driver can control a variety of vehicle systems including the audio system and multi-information display, while keeping both hands on the steering wheel.

03 / Mark Levinson Audio System

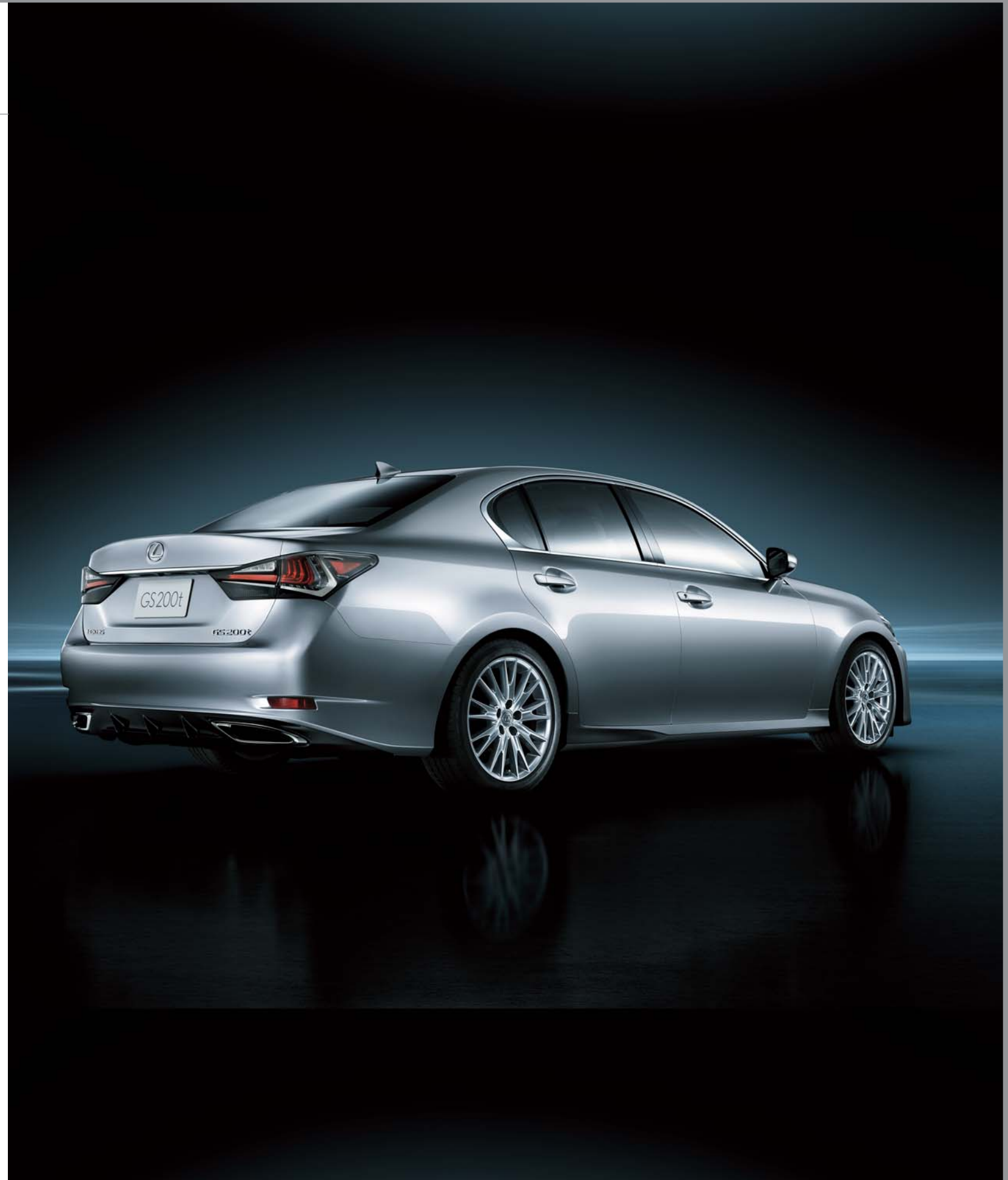
Specified with a fully digital 835W amplifier and 17 speakers utilizing GreenEdge technology, the Mark Levinson Premium Surround Sound System delivers a high resolution, 360° stereoscopic, home concert experience. Only available for GS350 and GS Hybrid package.

02 / Colour Thin Film Transistor (TFT) multi-information display

The 4.2-inch high-resolution colour TFT multi-information display provides a wide range of vehicle information and can be controlled using the switches on the steering wheel.

04 / Colour head-up display

Vehicle data such as the current speed, engine rpm and gears shift selection is projected directly onto the windshield in the driver's field of view. Simplified navigation commands, audio settings or other selected vehicle data can also be viewed in the head-up display.



UNPARALLELED DRIVING EXPERIENCE



PERFORMANCE

The GS was fine-tuned and tested over 1,000,000 miles to improve and provide a more engaging driving experience.

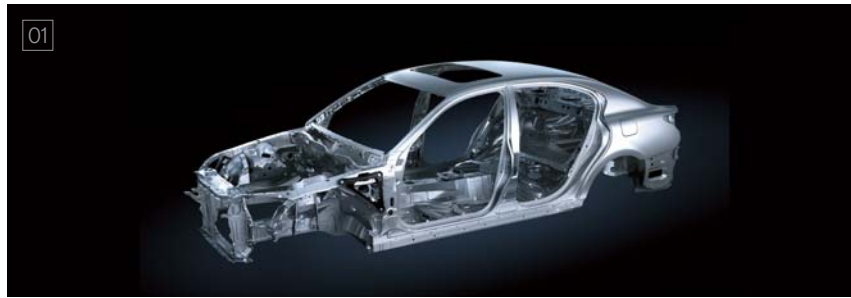
The all-new GS has been designed to offer a much more engaging and pleasurable driving experience. It combines sharp, responsive steering and excellent control with high-speed stability and top-notch ride comfort, consistent of a Lexus performance sedan.

Along with a re-engineered body shell with increased rigidity to allow the car to respond with much greater accuracy to your commands, the GS marks the introduction of a completely new approach to the management of airflow over the vehicle's

body to help control the vehicle's movement to enhance handling stability. Adding to the vehicle's aerodynamics is the smooth, flowing bodywork that reduces wind noise to a minimum.

At Lexus, where the Pursuit of Perfection is eminent, close attention was paid to the finest details. From going as far as improving the variable gear ratio steering to fine-tuning the multilink suspension, it results in only one outcome: an exhilarating, high-performance drive with top-notch precision handling.





01 / Chassis

An intense focus on the high-rigidity body structure drove the use of innovative production technologies including laser screw welding, line laser welding and body adhesives. Together with extensive spot welding, they contribute to the excellent handling, refined comfort and quiet ride.

02 / Front and rear suspension

The compact and highly-rigid front double wishbone suspension and multi-link rear suspension were optimised to deliver agile handling while maintaining luxurious ride comfort. Use of high-tensile steel, die cast and forged aluminium components further helps to reduce weight yet increase rigidity.



01 / Aerodynamics

Inspired by the Lexus LFA supercar, Lexus developed an airflow management concept called 'aerodynamic damping'. It moves airflow close to the vehicle body to enhance handling, smooths the flow in and around the wheel arches, and reduces air pressure within the arch itself.

02 / Active Variable Suspension (AVS)

The damping force at all four wheels is intelligently controlled by AVS in response to road surface conditions and driver input. This not only contributes to excellent ride comfort, but also enhances handling stability and road holding.*

03 / Drive mode select

You can tune the performance of the GS to suit your driving mood. Eco mode helps reduce emissions and fuel consumption while you drive in a relaxed manner. Sport S Mode adjusts the powertrain for more responsive driving, while Sport S+ Mode* also controls the chassis and EPS for an exceptionally engaging drive.

* Applicable to Luxury and F SPORT grades.



01 / 2.0-litre direct injection turbocharged engine

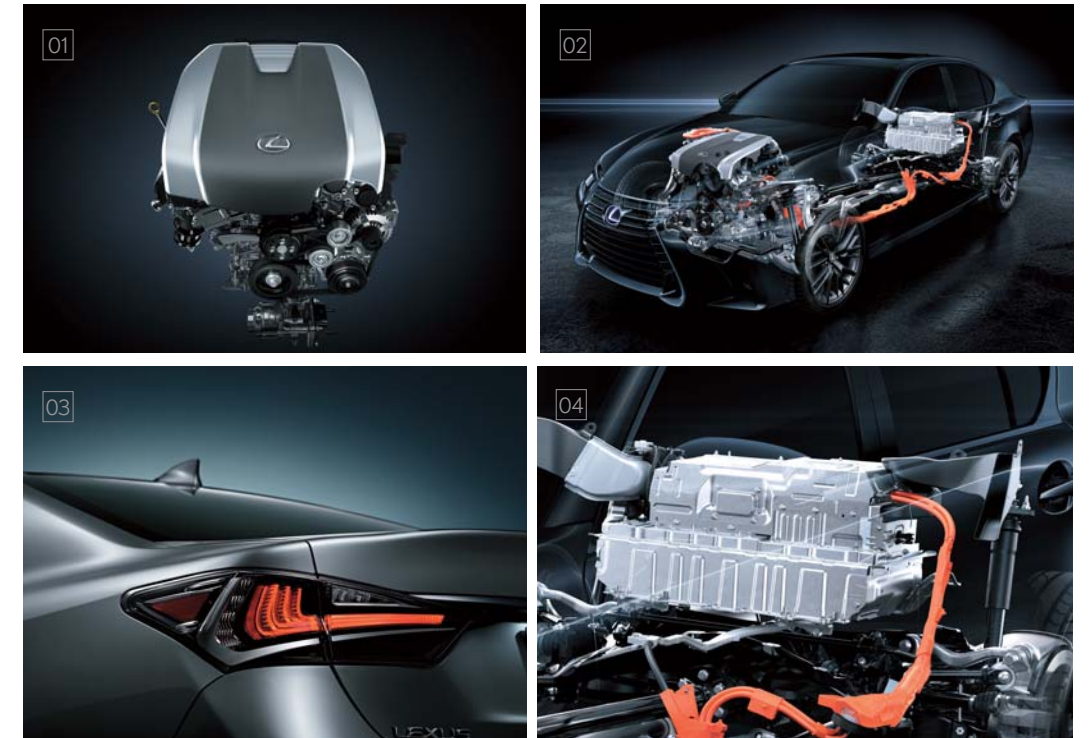
This newly-developed engine delivers a sophisticated fusion of exhilarating driving performance and excellent fuel efficiency. The compact high-efficiency twin scroll turbocharger is combined with an Atkinson Cycle engine with Dual VVT-iW. To realise optimum combustion, the innovative D-4ST features both direct and port injectors. This advanced Lexus engineering helps generate high torque from low through to high rpm ranges, high level responsiveness, as well as enhancing fuel economy.*1

02 / Dual exhaust pipes

Besides a sporty appearance to hint at the power of the turbo engine, the dual exhaust pipes help to ensure quietness at low engine speed while creating an emotional sound during acceleration.

03 / 8-Speed SDPS (Sport Direct Shift)

The dynamic linear acceleration of the lightweight and compact 8-Speed SDPS delivers smooth shift feeling and superb drivability. In Sport/Sport S or Sport S+ Mode, G-AI (Artificial Intelligence) - SHIFT selects the optimum gear and downshift pattern in response to input from a G force sensor. In M position, it enables gear holding, as well as full lock-up shifting from 2nd through 8th gears.



01 / 3.5-litre V6 gasoline engine

The V6 Atkinson Cycle engine with Dual VVT-iW*1 generates exhilarating driving performance balanced with excellent fuel efficiency. The innovative D-4S fuel injectors, to generate excellent output torque and fuel efficiency, while complying with strict emission standards.

02 / 3.5-litre V6 hybrid engine

With innovative D-4S and Dual VVT-i technology, this highly efficient Atkinson cycle engine is at the heart of the Full Hybrid. For dynamic driving and exceptional environmental performance, Lexus Hybrid Drive intelligently combines the power of a highly-efficient 3.5-litre V6 engine with electric power from a high-put motor.

03 / Metallic fins

Metallic fins on the underside of the lower rear bumper create a clean look that contributes to a distinctive identity suitable for a hybrid.

04 / Advance compact battery

The two-tier, 40-module N-MH (Nickel-Metal Hydride) 288V battery is installed in the luggage compartment behind the rear seats. Its compact structure helps ensure there is ample trunk capacity.

*1 VVT-iW: Variable valve Timing-intelligent Wide
D-4ST: Direct-injection 4-stroke Superior-version with Turbo.

YOUR PEACE OF MIND



SAFETY

Progress with confidence.

Even though the GS comes with 10 SRS airbags, Lexus understands there is much more to protecting you and your passengers. It's not a matter of counting features, but ensuring how they work, both independently and in harmony.

The all-new Lexus GS is equipped with the most technologically advanced active safety and driver assistance systems available on any automobile today.

Available on the GS Turbo F SPORT, GS 350 and GS Hybrid, the Head-up Display system projects navigations directions, audio information and vehicle speed on the

windshield in front of you, so you can spend more time focused on the roads ahead.

Also adding to the safety features of the GS is the Blind Spot Monitor (BSM) function, which utilises radar devices to detect overtaking vehicles in adjacent lanes.

The true brain, however, of the GS safety system is to be found in the Vehicle Dynamics Integrated Management (VDIM). It oversees everything, from braking and traction control to Vehicle Stability Control (VSC) and power steering. This system constantly assesses road conditions and the vehicle's performance, then makes minute corrections in milliseconds as required.



**01 / Blind spot monitor**

When the quasi-millimetre-wave radars in the rear bumper detect vehicles in adjacent lanes that aren't visible in the door mirrors, the system activates a warning indicator in the relevant door mirror the moment a vehicle enters this blind spot.

02 / Rear Cross Traffic Alert (RCTA)

To assist safe reversing, RCTA uses quasi-millimeter-wave radars in the rear bumper to detect approaching vehicles in difficult-to-see areas behind the vehicle. When an approaching vehicle is detected, RCTA alerts the driver using a buzzer and indicator in the relevant door mirror.

03 / Rear view camera with back guide monitor

Engage reverse and the view behind the car is shown on the display, together with on-screen guides to help you park.*¹

*The area the cameras can show is limited. Be sure to visually check your surroundings before you proceed.

**01 / 10 SRS airbags**

The driver and front seat passenger are protected by dual-stage SRS airbags together with pretensioners and force limiters of the front and outboard rear seatbelts. The driver and front seat passenger are protected by dual-stage SRS driver airbag, dual-stage SRS front passenger airbag, SRS knee airbags and SRS side airbags. SRS side airbags are also available for the outboard rear seats. SRS curtain shield airbags cover the front and rear door windows.*

*The SRS airbags are supplemental devices to be used with the seatbelts. The driver and all passengers in the vehicle must wear their seatbelts properly at all times. Never install a rear-facing CRS (Child Restraint System) on the front passenger's seat. For a forward-facing CRS, it is recommended you use it in the rear seats. Please do not use accessories for the seats which cover the parts where the SRS side airbags should inflate. Such accessories may prevent the SRS side airbags from activating correctly, causing serious injury (Lexus genuine seat covers are specifically designed for models equipped with the SRS side airbags. To find out about availability in your area, please inquire at your local dealer). The photo shows all the SRS airbags activated for display purposes only (the SRS side and curtain shield airbags only inflate on the side of the collision in an actual accident). For details on these and other important safety features, be sure to read the Owner's Manual carefully.

SPORTING EXHILARATION



GS F SPORT

*Inspires drivers
Intimidate onlookers*

It is time you gave in to your insatiable appetite for heart-racing performance. On the racetrack, its performance can push back frontiers. Yet, on the roads, it hugs corners and hits gravel as smoothly and seamlessly as any other Lexus.

Unveiling the new GS Turbo F SPORT - the sports sedan that flaunts extreme technological innovations, stunning performance and exciting handling characteristics.

Endowed with ultra-high performance features such as a race-tuned suspension and powerful brakes, the F SPORT blurs the line between race cars and sedans.

In the cabin, you'll find eye-catching F SPORT meters with a newly-introduced turbo boost meter to enhance your driving experience. F SPORT exclusivity is also heightened with the all-new Naguri-style aluminium trim, which is also found in the Lexus GS F.





GS F SPORT



A/ Front mesh grille & front bumper:
Distinctive honeycomb spindle grille and unique bumper for a bold and assertive design statement.

B/ Aluminium wheels:
Light and strong forged aluminium wheels with an F SPORT embossed centre cap.

C/ Front fender emblems:
Distinctively placed at the sides of the front fenders, the iconic F SPORT emblem is a mark of sportiness within the car.



01/ F SPORT meters
Dynamically displaying sports performance, the exclusive F SPORT analogue tachometer features a large silver ring with an illuminated needle, and a precision digital speedometer and shift position/ drive mode select indicators in the centre.

03/ Performance damper
A performance damper integrated into the front enhances rigidity and vibration damping performance, realizing exceptional handling stability that is at the heart of sports driving enjoyment.

02/ F SPORT leather upholstery
The leather design with diamond shaped perforations was developed exclusively for the F SPORT package. The vibrant Dark Rose is the signature F SPORT interior colour.

04/ F SPORT multi-information display
The multi-information display heightens your driving experience by displaying a G sensor with steering angle, accelerator opening and brake hydraulic pressure bars, and a turbo boost meter with oil temperature and pressure gauges.



D/ F SPORT meters:
Expresses dynamic sports performance with full length illuminated needle and precision digital speedometer.

E/ Steering wheel:
Perforated steering wheel, featuring the F SPORT emblem at its base.

F/ Aluminium pedals:
Drilled aluminium pedals for better grip and responsiveness.

G/ Shift lever knob:
Dimpled leather wrapping helps to further accentuate sportiness.

H/ Trim (Naguri-Style Aluminium):
Shaving intricate patterns on thin sheets of aluminium using special blades. Providing a sense of traditional Japanese art.

I/ Scuff plates
The front and rear scuff plates are finished in brushed aluminium and inscribed with the Lexus logo exclusively in jet black.



LEXUS
TAKUMI

The Lexus pursuit of perfection finds its finest expression in the master craftsmanship of the Takumi.



Every Lexus is based on an uncompromising approach to creating premium automobiles. Inspired by our 'Yet' philosophy, we seek innovation in every facet of engineering through a sophisticated fusion of seemingly incompatible ideas such as 'high performance yet high fuel efficiency. In addition, unique Lexus styling is born off our L-finesse design language, a fine balance of 'leading-edge' and 'finesse', which ensures every Lexus is not only captivating and luxurious, but also highly refined. Finally, every new Lexus model is also measured against a set of internal standards covering design, performance,

specifications and equipment, to ensure it is distinctive and worthy of the Lexus emblem.

This pursuit of perfection is evident at every stage of the manufacturing process. Every Lexus vehicle is created with a masterful skill and attention to detail inspired by both traditional artisanship and state-of-the-art engineering. For example, at the Tahara plant in Japan, precision components made using leading-edge digital technology are assembled and finished by master craftsmen called Takumi, whose technical expertise and sure senses are honed by decades of rigorous experience.

**THE MASTER CRAFTSMEN
WHO MAKE A LEXUS A LEXUS**

There is no higher honour within the engineering ranks of Lexus than a Takumi, or Master Craftsman. Each is hand-selected for performing their craft more skillfully and artfully than the rest. Tasked with training and instilling pride in the thousands of engineers beneath them, this elite group of ten oversees every aspect of development at the Tahara plant. They think in terms of microns. Their margin for error, even less. Though Hirofumi Koga has a specially calibrated machine designed to identify imperfections in the dash, he prefers to use a far more reliable tool: By running his gloved hand over the surface, he can detect less than a millimetre of difference in the uniformity of the foam underneath. And he requires his team members be able to do the same.



**HIROFUMI
KOGA**

*Master of Plastic Moulding,
36 years of experience*



**MASANORI
SUZUKI**

*Master of Vehicle Bodies,
31 years of experience*



**EIJI
GOTO**

*Master of Engine Parts,
37 years of experience*



**YASUNORI
MIYAMOTO**

*Master of Plastic Painting,
29 years of experience*



**KATSUHIRO
YAMAZAKI**

*Master of Vehicle Assembly,
31 years of experience*



**MITSUKI
YOSHIMURA**

*Master of Engine Casting,
35 years of experience*



**ATSUNOBU
WATANABE**

*Master of Engine Assembly,
27 years of experience*



**HIDEYA
SEGAWA**

*Master of Vehicle Inspections,
35 years of experience*



**YOSHIO
MATSUI**

*Master of Body Stamping,
32 years of experience*

Eiji Goto has similarly impossible standards when it comes to scrutinising engine parts. His team members must memorise a list of 250 points to inspect. Sound daunting? That's only for one piece. These are just two of the 26,000 tasks you'll find in a Lexus plant. Each must be precisely demonstrated and described in exacting detail by a craftsman to receive certification. How much detail? Consider this: There's a 14-minute film on how to place a grommet correctly—a task that takes a mere two seconds.



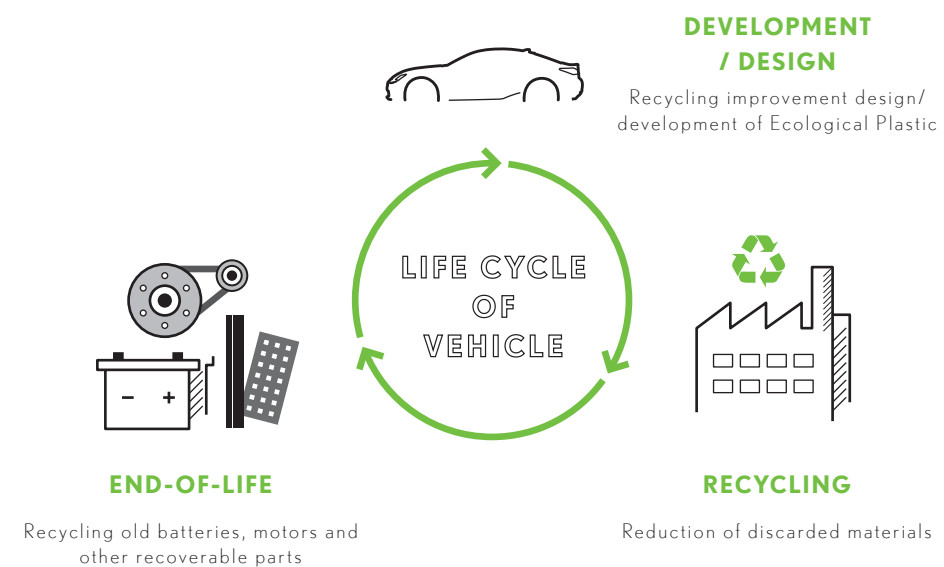
**KIMIHIRO
SAKAKIBARA**

*Master of Paint,
32 years of experience*



LEXUS
ENVIRONMENT

*Safe for you,
safe for the environment.*



At Lexus, we are committed to finding better, more efficient ways to contribute to a healthier planet, leading the industry in better business practices. Our focus on the environment drove our development and global leadership of hybrid luxury vehicles, and the knowledge we have gained is applied in all of our vehicles. Our commitment to recovering, recycling and re-using is built into the DNA of our entire company. To reduce waste to a minimum, we carefully recycle various materials in our offices, factories, and sales facilities, reducing CO₂ levels beyond our achievements on the road.

Specific initiatives to enhance the environment include integrating a keen environment-friendly focus on the entire life cycle of each vehicle, from design and production, through to the recycling of vehicles at the end-of-life. To reduce CO₂ emissions, at the design stage we specify extensive use of plant-derived plastics for components, instead of petroleum-derived plastics. During production, we make repeated use of reusable items, work hard to efficiently use resources to minimize waste, and recycle any waste produced.

LEXUS GS

EXTERIOR & INTERIOR COLOURS

A palette of colours, from bold and luminous to nuanced and sophisticated, lets you express your individuality



White Nova Glass Flake <083>*



Sonic Quartz <085>^



Dark Grey Mica <1G0>



Sonic Silver <1J2>



Sonic Titanium <1J7>



Black <212>



Graphite Black Glass Flake <223>



Red Mica Crystal Shine <3R1>



Amber Crystal Shine <4X2>^



Heat Blue Contrast Layering <8X1>*



Deep Blue Mica <8X5>^

*F SPORT Package Exclusive.
^Not available on F SPORT package.

<RIMS DESIGN>



17-inch 9-spoke aluminium wheels
(Executive grade)

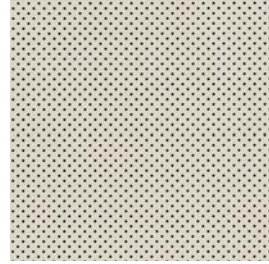


18-inch Multi-spoke aluminium wheels
(Luxury grade)

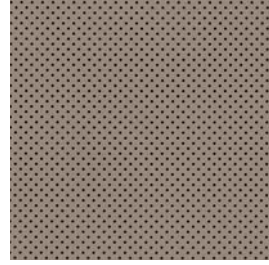


18-inch Dark Metallic Multi-spoke
aluminium wheels
(F SPORT grade)

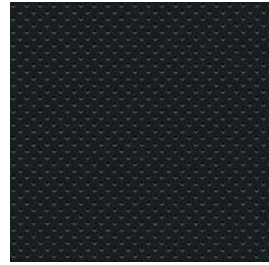
GS EXECUTIVE PACKAGE <SMOOTH LEATHER>



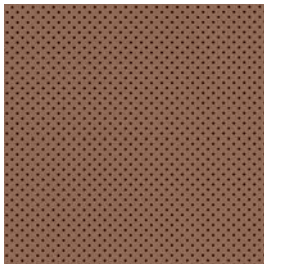
Rich Cream



Chateau



Black



Topaz Brown



Noble Brown

<TRIM>



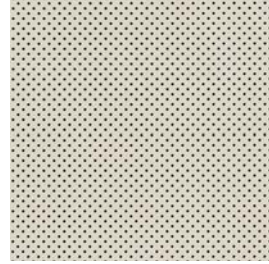
3D Film

<COLOUR COMBINATIONS>

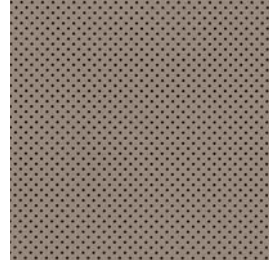
		RICH CREAM (3D FILM)	CHATEAU (3D FILM)	BLACK (3D FILM)	TOPAZ BROWN (3D FILM)	NOBLE BROWN (3D FILM)
		04	14	24	54	64
085	SONIC QUARTZ	•	•	•	•	•
1G0	DARK GREY MC.	•	•	•	•	•
1J2	SONIC SILVER	•	•	•	•	•
1J7	SONIC TITANIUM	•	•	•	•	•
212	BLACK	•	•	•	•	•
223	GRAPHITE BLACK GF.	•	•	•	•	•
4X2	AMBER CS.	•	•	•	•	•
3R1	RED MC. CS.	•	•	•	•	•
8X5	DEEP BLUE MC.	•	•	•	•	•

The images above are for colour references only.

GS LUXURY PACKAGE <SEMI-ANILINE LEATHER>



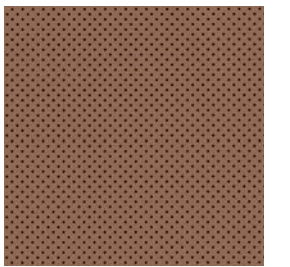
Rich Cream



Chateau



Black



Topaz Brown



Noble Brown

<TRIM>



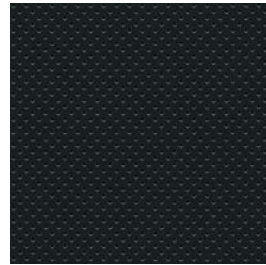
Shimamoku

<COLOUR COMBINATIONS>

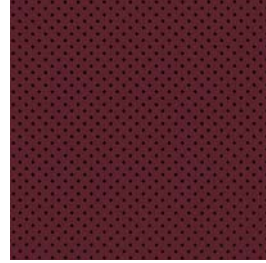
		RICH CREAM (SHIMAMOKU)	CHATEAU (SHIMAMOKU)	BLACK (SHIMAMOKU)	TOPAZ BROWN (SHIMAMOKU)	NOBILE BROWN (SHIMAMOKU)
		01	11	21	51	61
085	SONIC QUARTZ	•	•	•	•	•
1G0	DARK GREY MICA	•	•	•	•	•
1J2	SONIC SILVER	•	•	•	•	•
1J7	SONIC TITANIUM	•	•	•	•	•
212	BLACK	•	•	•	•	•
223	GRAPHITE BLACK GF.	•	•	•	•	•
4X2	AMBER CS.	•	•	•	•	•
3R1	RED MC. CS.	•	•	•	•	•
8X5	DEEP BLUE MC.	•	•	•	•	•

The images above are for colour references only.

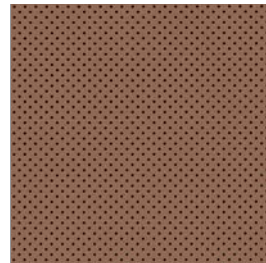
GS F SPORT PACKAGE <SMOOTH LEATHER>



Black

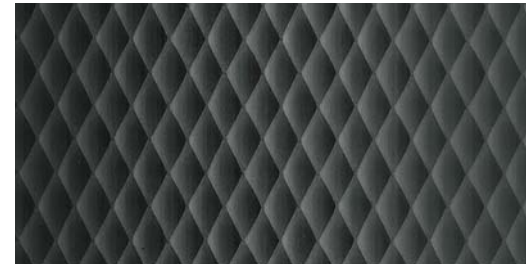


Dark Rose



Topaz Brown

<TRIM>



Naguri-Style Aluminium

<COLOUR COMBINATIONS>

		BLACK (ALUMINIUM)	DARK ROSE (ALUMINIUM)	TOPAZ BROWN (ALUMINIUM)
		26	36	56
083	WHITE NOVA GF.	•	•	•
1G0	DARK GREY MICA	•	•	•
1J2	SONIC SILVER	•	•	•
1J7	SONIC TITANIUM	•	•	•
212	BLACK	•	•	•
223	GRAPHITE BLACK GF.	•	•	•
3R1	RED MC. CS.	•	•	•
8X1	HEAT BLUE CONTRAST LAYERING.	•	•	•

The images above are for colour references only.

SPECIFICATIONS

ENGINE	GS HYBRID LUXURY	GS 350 LUXURY	GS TURBO F SPORT	GS TURBO LUXURY	GS TURBO EXECUTIVE
Engine Type	V6, 24-Valve DOHC with Dual VVT-i	V6, 24-Valve DOHC with Dual VVT-iW	In-line 4, 16-valve DOHC, Twin-scroll Turbocharger and Intercooler with Dual VVT-iW & D-4ST		
Drive	Rear-Wheel Drive				
Transmission Type	E-CVT		8-Speed Automatic Transmission		
Bore x Stroke	94.0 x 83.0 mm		86.0 x 86.0 mm		
Displacement	3456 cc		1998 cc		
Compression Ratio	13.0	11.8	10.0		
Max. Output (Combined)	254 kW (340bhp) / 6000 rpm	232 kW (310 bhp) / 6600 rpm	180 kW (241 bhp) / 5800 rpm		
Max. Torque	352 Nm / 4500 rpm	380 Nm / 4800 rpm	350Nm / 1650 - 4400 rpm		
Max. Speed	250 km/h	235 km/h	230 km/h		
Acceleration (0 - 100km/h)	5.9 sec	6.0 sec	7.3 sec		
Fuel Consumption	6.1 L / 100km [16.3 km/L]	9.6 L / 100km [10.4 km/L]	8.0 L / 100km [12.5 km/L]		
Carbon Emissions	141g/km	222 g/km	186 g/km		

GS HYBRID MOTOR AND BATTERY

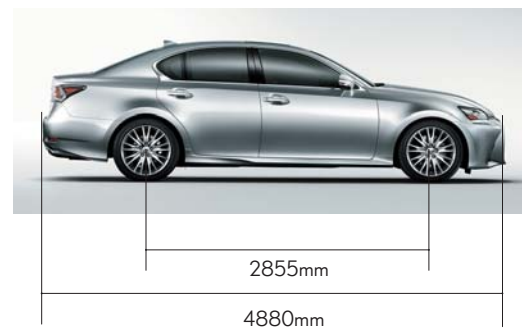
Motor Type	Permanent Magnet Synchronous Motor
Max. Output	147 kW
Max. Torque	275 Nm
Battery Type	NiMH
Number of Battery Cells	240

CHASSIS

Brake	Ventilated Disc Brake (AVS)	Ventilated Disc Brake
Suspension (Front)	Double Wishbone (AVS)	Double Wishbone
Suspension (Rear)	Multi-link (AVS)	Multi-link
Steering System	Electronic Power Steering	

MEASUREMENTS

Length	4880 mm			
Width	1840 mm			
Height	1455 mm			
Wheelbase	2855 mm			
Tread (Front)	1580 mm			
Tread (Rear)	1605 mm			
Min. Turning Radius (Tyre)	5.3 m			
Kerb Weight	1825 - 1910 kg	1665 - 1745 kg		2170 kg
Gross Vehicle Weight	2325 kg	2190 kg	520 L	2170 kg
Boot Capacity	450 L			
Fuel Tank Capacity	66 L			



All specifications, information and features are accurate at the time of printing and are subject to change without notice.

FEATURES

ULTIMATE COMFORT

	GS TURBO EXECUTIVE	GS TURBO LUXURY	GS TURBO F SPORT	GS 350 LUXURY	GS HYBRID LUXURY
Ambient Illumination	●	●	●	●	●
Electrically Adjustable Steering Wheel	●	●	●	●	●
Auto Retractable Wing Mirrors with Memory	●	●	●	●	●
Electrochromic (EC) Inside Rear View Mirror	●	●	●	●	●
Air Ventilated Front Seats (Cooler + Heater)	●	●	●	●	●
Air Ventilated Rear Seats (Heater)	-	●	-	●	●
Original Factory-fitted Upholstery	Smooth Leather	Semi-Aniline Leather	F SPORT Smooth Leather	Semi-Aniline Leather	Semi-Aniline Leather
10-way Power Adjustable Front Seats	●	-	FP	-	-
18-way Power Adjustable Front Seats with Shoulder, Side, Pelvic, Calf Support and Cushion Length Adjuster	-	●	Without Calf Support (D)	●	●
Seat Lumbar Support	2-way	4-way	4-way (D) 2-way (FP)	4-way	4-way
Butterfly Headrest Support	-	●	-	●	●
Front Passenger Seat Shoulder Switch	-	●	-	●	●
Memory Seats	D	D & FP	D	D & FP	D & FP
Dual-zone Independent Climate Control	●	-	●	-	-
Tri-zone Independent Climate Control	-	●	-	●	●
Nanoe System	●	●	●	●	●
Rear Centre Armrest with Integrated Audio and Air Conditioning Switches	-	●	-	●	●
Power Rear Sunshade	●	●	●	●	●
Rear Side Sunshade	-	●	-	●	●

INTUITIVE TECHNOLOGY

Smart Keyless Go	●	●	●	●	●
LED Daytime Running Lamps	●	●	●	●	●
Bi-LED Headlamps	●	-	-	-	-
Bi-LED Triple 'L' Headlamps	-	●	●	●	●
LED Front Fog Lamps	●	●	●	●	●
Auto-Leveling	●	●	●	●	●
Headlamp Cleaner	●	●	●	●	●
Auto Rain Sensor	●	●	●	●	●
Cruise Control	●	●	●	●	●
Coloured Head-up Display	-	-	●	●	●
Adaptive Variable Suspension (AVS)	-	●	●	●	●
Drive Mode Select Switch (Eco/Normal/Sport/Sport+)	3	4	4	4	5 (EV)
Lexus Integrated Navigation System Display Screen	8-inch	8-inch	8-inch	12.3-inch	12.3-inch
Lexus Remote Touch Interface	●	●	●	●	●
Paddle Shifters	●	●	●	●	●

AUDIO & ENTERTAINMENT

USB / iPod Playback Function	●	●	●	●	●
AM/FM tuner, DVD player	●	●	●	●	●
Phone Bluetooth	●	●	●	●	●
Lexus Premium Audio System with 12 Speakers	●	●	●	-	-
Mark Levinson Audio System with 17 Speakers	-	-	-	●	●

360° PROTECTION

10 SRS Airbags	●	●	●	●	●
Blind Spot Monitor (BSM) + Rear Cross Traffic Alert (RCTA)	●	●	●	●	●
Hill Start Assist	●	●	●	●	●
Electric Park Brake (EPB) with Brake Hold Function	●	●	●	●	●
Electric Power Steering (EPS)	●	●	●	●	●
Vehicle Stability Control (VSC)	●	●	●	●	●
Anti-Lock Brake System (ABS)	●	●	●	●	●
Traction Control System (TCS)	●	●	●	●	●
Rear View Camera with Back Guide Monitor	●	●	●	●	●
Lexus Parking Assist System with 8 Sensors	●	●	●	●	●
Anti-theft System	●	●	●	●	●

RIMS & TYRES

Bridgestone 225/50R17 SM Aluminium Wheels (9-Spoke)	●	-	-	-	-
Bridgestone 235/45R18 SM Aluminium Wheels (Multi-Spoke)	-	●	-	●	●
Bridgestone 235/45R18 SM Aluminium Wheels (Dark Metallic Multi-Spoke)	-	-	●	-	-
Spare Tyre	●	●	●	●	●

Note: Vehicles illustrated, specifications and equipment detailed in this specification sheet may vary. Lexus reserves the right to alter any details of specifications and equipment without notice.

Please consult your Lexus sales consultant for details.

© 2016 BORNEO MOTORS (SINGAPORE)



BORNEO MOTORS (SINGAPORE) PTE LTD | 33 LENG KEE ROAD SINGAPORE 159102 TEL: 66-31-1388

LEXUS BOUTIQUE | MON-FRI: 9AM TO 6PM SAT: 9AM TO 7PM SUNDAY & PUBLIC HOLIDAYS: 10AM TO 6PM

LEXUS SERVICE CENTRE | MON-FRI: 8AM TO 5PM SAT: 8AM TO 12PM CLOSED ON SUNDAY & PUBLIC HOLIDAYS

WWW.LEXUS.COM.SG