

 LEXUS

GS LINE







GS450h Limited in Volcanic Bronze

The New Generation GS. Innovation in motion.

From the very beginning, the quest of Lexus engineers has been to create the ultimate luxury sports sedan. The New Generation Lexus GS takes this quest a dramatic step forward, displaying advanced driving technologies within a vehicle that rekindles the absolute joy of driving.

It enriches your journey on every sensory level. From the selection of more powerful engines and the confidence of agile handling, to the visual exhilaration of a sweeping new design.

The GS Line signals the new persona of Lexus, measured not only in design but innovation. Bold, confident, dynamic.

This vehicle is capable not only of anticipating your mood, but changing it as well. At the touch of the 'Drive Mode Select' dial, its interior meter illumination is transformed, while driving response sharpens with similar ease from relaxed to responsive. All at your fingertips.

Lexus' unique design language, L finesse, has taken an emphatic step forward with the introduction of the striking signature Lexus spindle grille. Its true strength, however, lies on the inside as its technology radiates around the driver. More spacious, more luxurious, more refined and more rewarding.

Responsive handling and agility is delivered with the help of an all new suspension and chassis platform. The GS350 and GS450h F Sport models assume a greater sense of agility with a Lexus first, Dynamic Rear Steering (DRS) – the front and rear wheels each contribute to steering agility by both responding to the smallest movements of the steering wheel.

As much as New Generation GS redefines the luxury sports sedan, the GS300h will challenge your preconceptions about hybrid performance and exhilaration; acceleration response has gone from silky to scintillating, yet it emits only 121gm/km of CO₂.



GS350 F Sport in Crimson Crystal





The DNA of LFA is found throughout the GS range.



Interiors are a synthesis of diverse materials.

Seats are covered in soft, supple leather with contrasting stitching.

The analogue clock has LED hour markers.

L finesse design redefined.

An exterior treatment derived from the futuristic Lexus LFA supercar has given a new sense of energy and urgency to the uniquely Lexus design language known as L finesse. This is the design template that will reshape and redefine all future Lexus vehicles.

The styling is spearheaded by a signature Lexus spindle grille within a frontal treatment that announces the vehicle's arrival in no uncertain terms. The rear bumper design optimises airflow with its distinctive diffuser and aero fins. The GS L finesse styling concludes with LED tail lamps sculpted in a distinctive L-shape.

Inside the cabin, L finesse makes its presence felt in a range of tactile and visual expressions.

The interior treatment is a synthesis of diverse materials. From the contrasting stitching in the leather-accented trim and the tasteful use of woodgrain accents, to sleek metallic trims and gloss surfaces, New Generation GS reflects today's new generation themes in interior design.

Surfaces close to occupants' bodies are softer and appealing to the touch, while those further away are harder and sleeker, seducing the eye. The cockpit has been divided into two distinct zones for enhanced clarity and control. The instruments are strategically positioned in the upper 'display' zone ensuring optimal readability with minimal eye movement, while driving controls are all placed within easy reach in the 'operation' zone. Within this, what Lexus designers describe as Lexus Remote Touch, allows the driver intuitive access to key systems and controls. The instrument panel is accented by a sleek horizon line which sweeps elegantly across the dash panel.

Harmoniously meshing tradition with technology, designers have installed an analogue clock, reminiscent of fine Swiss timepieces, accented with LED illumination.





GS250 in Sonic Silver





Head Up Display takes the guess work out of night driving (F Sport and Limited models).



The Driver Fatigue Monitor alerts weary drivers (Limited models).

A close eye on the future.

Lexus GS showcases the very latest safety advances from Lexus. Head Up Display (HUD) in selected models helps keep you informed by projecting information like vehicle and engine speed and satellite navigation directions onto the windscreen, allowing you to keep your eyes focused on your driving.

Equally eye opening is the Pre-Crash safety System (PCS) on all models with the latest Driver Fatigue Monitor system on Limited models.

As you watch the road ahead, the Driver Fatigue Monitor system is also watching you. It incorporates an infra-red camera integrated into the steering column which is able to monitor the direction of your face,





Whiplash lessening front seats are an important safety feature.

Electric Power Steering for effortless manoeuvrability.

and also whether your eyes are open or not. If it detects the possibility of a collision and if you're not sufficiently alert, PCS first sounds a warning. Then if you fail to respond, the brakes are applied.

In this and other emergency situations, the PCS is able to detect an imminent emergency and then initiate a series of pre-emptive measures to help minimise collision impact.

Lexus GS also incorporates the advanced Lexus Vehicle Dynamics Integrated Management (VDIM) technology. By integrating systems like the Anti-lock Braking System, Electric Power Steering and throttle, VDIM intelligently helps take corrective action to maintain your chosen direction in emergencies.

Fortunately everyday motoring is safeguarded by equally insightful technology. During highway cruising, Dynamic Radar Cruise Control (DRCC) helps maintain safe cruising distances by reducing the throttle and even applying the brakes to slow you down if another vehicle crosses your path.

Electric Power Steering allows effortless manoeuvrability around town and precise cornering with optimum road feel. Variable Gear Ratio Steering (VGRS) further enhances steering response on GS350 and GS450h F Sport models by ratio in accordance with vehicle speed and steering operations.

While sophisticated technologies have been employed to predict what's ahead, equally advanced are the systems installed to protect you. Whiplash lessening front seats put occupants in the optimum position in a rear collision to reduce the risk of whiplash injuries.





Greater interior space benefits all occupants.

The Lexus remote controller is your access to GS intelligence.

The 12.3" display in Limited models (and F Sport with Mark Levinson option) allows for wider customisation.

Performance with poise.

Stepping into the driver's seat of New Generation GS evokes a range of emotions. On one hand confidence and contentment, on the other an acute sense of anticipation and stimulation.

The entire cabin design radiates around the diverse needs of you, the driver. In the Limited models, 18-way power adjustable front seats with additional 4-way manual adjustable front headrests adapt to your unique torso, ensuring a perfect posture to eliminate fatigue. A memory function with three memory settings is also provided for both front seats.

A soothing sense of opulence has been created through a harmonious blend of soft hides, wood and metallic accents within the leather-trimmed interior. The GS450h Limited keeps the connection between human and machine pure with a bamboo steering wheel, fine-tuned by engineers and traditional artisans to be functional and beautiful to both hand and eye.

The Mark Levinson audio in Limited has 835W of power.

Limited models have 18 way power seats for absolute comfort.

Rear passengers have gained extra legroom.

Limited models add climate and audio controls to rear passengers.

There's a feeling of spaciousness with added headroom, legroom and ease of entry. Whilst you and your passengers are able to stretch out and travel in uncompromised comfort, equally accommodating is the generous boot. Capable of consuming the luggage demands of extended touring, it can carry four sets of golf clubs, or even a disassembled racing bicycle.

You'll also feel a remarkable sense of calm as the rigid body structure developed through Computer Aided Engineering quells road noise and vibration. This sense of comfort and control is enhanced by an Adaptive Variable Suspension (AVS) in selected models, which intelligently adjusts to compensate for variable terrain. You will experience crisp response with minimum body roll on smoother surfaces. Then as road quality deteriorates, AVS progressively fine tunes shock absorber response for refined ride comfort.

Venturing across diverse terrains demands equally adventurous climate control technology. The Lexus-first S-Flow system can direct airflow only to wherever occupants are actually seated, helping to save energy and reducing engine drag for improved performance and fuel efficiency.

To keep you better informed, the new generation Lexus Remote Touch controller on the centre console gives you intuitive access to a wealth of information, from satellite navigation directions to audio settings. Lexus engineers were also big on visual clarity in Limited and optioned F Sport models, with an expansive 12.3" multimedia display, the world's largest in a luxury sedan. It ensures optimum readability with minimal eye movement while you're driving, while its unique split screen layout allows multiple information for the driver and front passenger to be displayed at the same time. Advanced Bluetooth connectivity, standard in all models, gives you advanced features including automatic phonebook download capability and streaming audio. Voice control allows you to specify what track is played from your iPod, make a call from your mobile phone or inform the navigation system of where you want to be guided to.

In GS, there's no looking back, but should you do so, a Rear View Camera with guidance is fitted as standard.

While your senses of touch and sight have been comprehensively addressed, your ears can also come along for the ride. Mark Levinson has created an 835 watt, 17-speaker surround sound system for selected models, surpassing all his previous efforts in a Lexus. Of particular note is a Class D Digital Amplifier that intelligently compensates for ambient noise, and gives you the improved clarity and energy efficiency of advanced GreenEdge™ speakers.



GS350 in Meteor





EV mode allows for short distance driving using battery power.

The ECO meter enables monitoring of energy use.

Choosing a hybrid is no longer motivated by a twinge of conscience, but a conscious decision to strap yourself into a more exhilarating ride. Lexus GS300h and GS450h present you with a performance edge as well as decreased fuel consumption.

Your first visual signal of the demeanour of this vehicle is the hybrid blue Lexus badge. Behind the front grille is what many believe is the future of high performance. The Lexus Hybrid Drive incorporates an Atkinson cycle engine which has been adapted with performance

GS450h high performance hybrid
- total system output **254kW**





Select sports modes and GS Hybrid takes on a different role.

Blind Spot Monitoring adds extra safety beyond the car.

and efficiency technologies including D-4S Direct Injection, making it a world's first.

The tuning of this engine is quite unlike a conventional engine, allowing it to extract maximum power from every drop of fuel, while ensuring less unburnt fuel escapes into the exhaust system.

This works together with a high output electric motor to drive the rear wheels. You can boost electric power output with a twist of the Drive Mode Select dial, so in SPORT mode you have 650 volts on tap.

Maximum torque from the electric motor is delivered from standstill, contributing to astonishingly rapid acceleration. Fortunately, a full complement of GS suspension and safety technologies is on board to provide precise control.

Choose the GS450h Limited and benefit from the prominent LED headlights. These intensely powerful yet highly energy efficient lights, seemingly a dichotomy in a world where less is more, they illuminate sooner, shine brighter yet consume less power.

The Lexus Hybrid Drive is so responsive that Lexus felt comfortable adding two F Sport performance-focused variants.

The GS300h and GS450h F Sport models give you renewed permission to enjoy exhilarating performance in today's world.



GS450h Limited in Volcanic Bronze

GS450h F Sport in Basalt Mica



GS450h Limited in Volcanic Bronze





Ergonomics makes driving any GS model a real pleasure.

Race-inspired steering wheel mounted paddle shifters allow for faster gear changes.

Stimulation of the senses.





Drive Mode Select
adjusts performance
to your mood.

Form and function go
hand-in-hand on the
GS steering wheel.

The moment your journey begins, your senses of sight and touch are uplifted via the Drive Mode Select dial in all models. Simply rotate the dial and the personality of Lexus GS is transformed.

'ECO' mode assumes a sense of calm and comfort, climate control systems are optimised to help conserve fuel, road vibrations are suppressed by the available Adaptive Variable Suspension system and transmission shifting is refined. Switch to 'SPORT S' and the blue instrumentation morphs to a red hue, and throttle response quickens. 'SPORT S+' mode further elevates the sensation as the Adaptive Variable Suspension assumes sport settings for more agile cornering and the Vehicle Stability Control (VSC) is retuned to be less intrusive.

If that is what results with a single switch, imagine what Lexus engineers have achieved with a complete engineering transformation.



Throughout the body structure, engineers have added structural reinforcements only where they are most effective, keeping the body light yet tight. The wheels are wider apart, for greater stability. Innovations like forged aluminium suspension components have reduced weight and this, together with more responsive shock absorbers, allows the suspension to react faster to road undulations to enhance comfort and control. Yet for all its precise handling, New Generation GS retains those distinctly Lexus traits of comfort and refinement.

You have a choice of highly responsive engines beginning with a Quad Cam 2.5L V6. GS350 models are powered by the latest generation 3.5L V6. Both engines are enhanced with Dual VVT-i for increased power when you need it, yet improved economy when you don't.

Under hard acceleration aural pleasure from the engine is increased by a sound amplifying valve that opens in the inlet manifold of petrol models and is amplified by the redesigned muffler.

In GS350 models the eight-speed sequential transmission with paddle shifters is similarly enhanced, thanks to technologies carried over from the racetrack bred IS F. In SPORT S and SPORT S+ modes on petrol models, upshifts are quicker while blipping downshift control momentarily 'blips' the throttle for swifter, rev-matched downshifts in sequential mode. While cornering, Sport D transmission control changes down to a lower gear for more precision into the corner, with crisper acceleration out of the corner.

GS350 F Sport in Crimson Crystal

F stands for sport.

Lexus performance engineers have created a dedicated F Sport model in the GS line-up. F stands for Fuji speedway, the breeding ground for Lexus' F Sport performance division. It is here that Lexus performance engineers were given free rein to create a dedicated sports inspired expression of the GS range.

While the adrenalin charged outward appearance of the F Sport arouses the senses with its distinctive 19" alloy wheel design, it's once you step into the driver's seat that the performance truly begins.

Immerse yourself in the 16-way power adjustable driver's seat featuring power adjustable side bolsters for optimum support while cornering. Take hold of the distinctive F Sport dimpled steering wheel and transmission gear knob and press the sports pedals.

As your journey unfolds, you'll discover how steering agility entered a new dimension with a Lexus first. Lexus Dynamic Handling available on GS350 and GS450h F Sport models integrates the Variable Gear Ratio Steering (VGRS), Electric Power Steering (EPS) and all new Dynamic Rear Steering (DRS) to intelligently redirect the front end and the rear wheels for remarkable cornering control and agility.

In addition, GS350 and GS450h F Sport models feature 'Step 5' Vehicle Dynamics Integrated Management (VDIM) technology. It works in conjunction with DRS to further elevate your driving sensation, delivering crisp cornering control. The VDIM also enhances stability and safety by helping maintain the vehicle's composure in emergency situations.



Lexus LFA at Mt Fuji
embodiment of
F Sport models.



F Sport's front 18" two
piece brake rotors and
four piston calipers.



GS350 F Sport in Crimson Crystal





GS350 F Sport in Crimson Crystal

Lexus Care

Lexus Warranty

An important part of the peace of mind that comes with owning a Lexus is the built-in warranty on your vehicle. Each Lexus vehicle comes with a four year unlimited kilometre* warranty, supplemented by a six year corrosion perforation warranty. This warranty is offered to the first owner and subsequent owners within this four year period.

Lexus Service Plan

The Lexus Full Maintenance Service Plan that accompanies every new Lexus covers all parts and labour costs associated with the Lexus recommended service schedule for a period of four years unlimited kilometres* from the date of first registration. It combines an exacting standard of maintenance with a high level of customer convenience and ensures your Lexus is serviced, as it should be - by specially trained Lexus technicians.

Lexus On Call

With Lexus On Call we've made sure the service that makes Lexus unique will always be as close as your phone or computer. This way, you can summon assistance whenever required. In the event of an emergency or breakdown we like to take special care of you and your Lexus. Your comments are also important to us, so you're most welcome to contact us anytime and talk to us about your Lexus experience.

Lexus Plus

We know that a helping hand can be invaluable in an emergency. Lexus Plus, in conjunction with the New Zealand Automobile Association (AA), provides a special nationwide emergency service for Lexus owners. The Lexus Plus

programme provides extended protection against the possibility of being stranded away from home because of a vehicle breakdown. It gives you constant access to immediate help 24 hours a day, seven days a week.

Lexus Plus offers a wide range of services whether you require roadside assistance to recover your vehicle, emergency windscreen replacement, alternative transport home or even assistance with changing travel plans if you are unexpectedly delayed.

Lexus will also arrange any accommodation and rental car requirements that may arise if breakdown repairs cannot be completed on the day of the emergency. The service even extends to transporting replacement clothing to you, or to passing on urgent messages to family, friends or colleagues.

Lexus Financial Services

There is an extensive range of tailored finance solutions available through your Lexus dealer designed to make acquiring a Lexus as effortless as driving one. Whether you require a fleet or personal finance plan, there are a wide range of options for leasing or purchasing a vehicle to suit your individual needs.



Lexus On Call is your
direct link to Lexus support.

FREEPHONE (24 hours):
0800 4 LEXUS (0800 453 987)

WEB:
www.lexus.co.nz

EMAIL:
oncall@lexus.co.nz

* Four Year Warranty is made up of three year New Vehicle Warranty and one year Lexus Care Warranty.

LEXUS OF NORTH SHORE

Corner of Link Drive and Target Road
Wairau Park, NORTH SHORE CITY
P O Box 100550,
NORTH SHORE CITY
Phone: 09 442-3670

LEXUS OF AUCKLAND CITY

29 Great North Road, Grey Lynn, AUCKLAND
P O Box 8947, Symonds Street, AUCKLAND
Phone: 09 370 -0227

LEXUS OF HAWKE'S BAY

505 North Karamu Road, HASTINGS
P O Box 165, NAPIER
Free Phone: 0800 425-3987 (0800 HB LEXUS)
Phone: 06 872-8222



GS250 in Sonic Silver

LEXUS OF WELLINGTON
54 Kent Terrace, WELLINGTON
P O Box 9541, Marion Square, WELLINGTON
Phone: 04 802-0610

LEXUS OF CHRISTCHURCH
227 Montreal Street, CHRISTCHURCH
P O Box 22482, High Street, CHRISTCHURCH
Free Phone: 0800 466-453
Phone: 03 363-8748

GS LINE EXTERIOR COLOURS



077 White Pearl Crystal Shine

n/a F Sport



8W3 Meteor Mica

n/a F Sport



1J2 Sonic Silver



8V3 Lapis Lazuli Mica



1H9 Basalt Mica



212 Onyx



3S8 Crimson Crystal



214 Elysium Black Mica

n/a F Sport



4V3 Volcanic Bronze Mica Metallic

n/a F Sport



217 Starlight Black Glass Flake



083 White Nova Glass Flake

F Sport only

GS LINE INTERIOR COLOURS

GS250 / GS300h / GS350 / GS450h trim combinations smooth leather and round perforations

03 Ivory leather	Black trim (gloss)	light brown stitching
11 Light Grey leather	Black trim (gloss)	silver and black stitching
23 Black leather	Black trim (gloss)	silver stitching



Ivory

N/A F SPORT MODELS

GS300h F Sport / GS350 F Sport / GS450h F Sport trim combinations smooth leather and diamond perforations

24 Black leather	Aluminium trim	silver stitching
30 Garnet leather	Aluminium trim	silver stitching

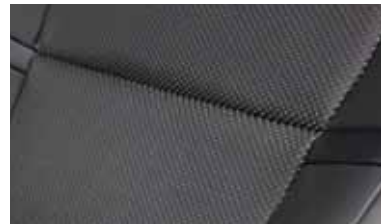


Light Grey

N/A F SPORT OR LIMITED MODELS

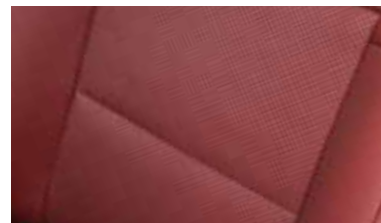
GS350 / GS450h Limited trim combinations semi-aniline leather

00 Ivory leather	Walnut (matte)	light brown stitching
01 Ivory leather	Ebony (gloss)	light brown stitching
02 Ivory leather	Bamboo (matte)*	light brown stitching
20 Black leather	Walnut (matte)	silver stitching
21 Black leather	Ebony (gloss)	silver stitching
22 Black leather	Bamboo (matte)*	silver stitching
50 Topaz Brown leather	Walnut (matte)	silver and black stitching
51 Topaz Brown leather	Ebony (gloss)	silver and black stitching
52 Topaz Brown leather	Bamboo (matte)*	silver and black stitching



Black

ALL MODELS



Garnet

F SPORT ONLY

*GS450h Limited only



Topaz Brown

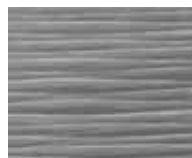
LIMITED MODELS ONLY

GS250 / GS350
GS300h / GS450h



Black trim (gloss)

GS300h F Sport
GS350 F Sport
GS450h F Sport



Aluminium trim (gloss)

GS350 Limited
GS450h Limited



Walnut trim (matte)

OPTIONAL for
GS350 Limited
GS450h Limited



Ebony trim (gloss)

OPTIONAL for
GS450h Limited



Bamboo trim (matte)

GS SPECIFICATIONS: 250 / 350

350 F SPORT / 350 LIMITED

FACTS & FIGURES:			
Overall length:	4850mm	Gross vehicle weight (GS250):	2170kg
Overall width (mirrors folded):	1840mm	Gross vehicle weight (GS350):	2190kg
Overall height:	1455mm	Kerb weight (GS250):	1640-1720kg
Wheelbase:	2850mm	Kerb weight (GS350):	1655-1745kg
Minimum ground clearance:	130mm	Luggage capacity:	520L
Drag Coefficient:	0.27	Towing capacity braked:	1600kg
		Towing capacity unbraked:	750kg

MECHANICAL FEATURES:	GS250	GS350	GS350 F Sport	GS350 Limited
2.5 litre quad cam 24 valve V6 petrol engine with dual VVT-i develops 154kW of power @ 6400rpm and 253Nm of torque @ 4800rpm.	●			
Fuel consumption 9.3L/100km / CO ₂ emissions 215g/km* (combined).	●			
3.5 litre quad cam 24 valve V6 petrol engine with dual VVT-i develops 233kW of power @ 6400rpm and 378Nm of torque @ 4800rpm.		●	●	●
Fuel consumption 10.0L/100km / CO ₂ emissions 225g/km* (combined).		●		●
Fuel consumption 10.0L/100km / CO ₂ emissions 232g/km* (combined).			●	
95 octane is recommended. Tank capacity is 66 litres.	●	●	●	●
6-speed automatic transmission with Sport Direct Shift sequential manual mode, blipping downshift control and AI shift control. Steering wheel mounted gear shift paddles. Centre console drive mode selector for snow, ECO, normal and sport.	●			
8-speed automatic transmission with Sport Direct Shift sequential manual mode, blipping downshift control and GAI shift control. Steering wheel mounted gear shift paddles. Centre console drive mode selector for snow, ECO, normal (and sport + for F Sport/Limited).			●	●
Fully independent double wishbone front and multi-link rear suspension with front and rear stabiliser bars.	●	●	●	●
Adaptable Variable Suspension (AVS).			●	●
Rack assist Electric Power Steering (EPS).	●	●	●	●
Power-assisted ventilated front and rear disc brakes.	●	●		●
Power-assisted ventilated front disc brakes with two piece rotor; power-assisted ventilated rear disc brakes.			●	
Anti-lock Braking System (ABS), Electronic Brake-force Distribution (EBD) and Brake Assist (BA). Electric parking brake with auto and manual modes.	●	●	●	●
Vehicle Stability Control (VSC) and Traction Control (TRC) with on-off switch, Hill-Start Assist Control (HAC).	●	●	●	●
Vehicle Dynamics Integrated Management (VDIM).	●	●	●	●
Lexus Dynamic Handling System (LDH) with Dynamic Rear Steering (DRS), Variable Ratio Steering (VGRS) and Electric Power Steering (EPS).			●	
18" alloy wheels fitted with 235/45 R18 steel belted radial ply tyres. Temporary type spare steel wheel.	●	●		●
19" alloy wheels fitted with 235/40 R19 (front), 265/35 R19 (rear) steel belted radial ply tyres. Temporary type spare alloy wheel.			●	



18" alloy - GS250, GS350



18" alloy - GS350 Limited



19" alloy - GS350 F Sport

*Fuel consumption and CO₂ information will vary depending on driving conditions/style, vehicle condition and options/accessories fitted - ECE/01/00 standard.

	GS350	GS350	GS350F Sport	GS350 Limited
FEATURES:				
Bi-Xenon headlights (LED headlights for Limited) with Adaptive Front-lighting System (AFS); headlight cleaners; headlight control system; with auto on and off LED daytime running lights; LED clearance lights.	●	●	●	●
Active High Beam (AHB) headlights.			●	●
Pre-crash safety system with pre-crash brake, pre-crash brake assist, radar cruise control, pre-crash linked front seat belts with pre-tensioners and force limiters; alarm system siren (F Sport and Limited).	●	●	●	●
Adaptive Variable Suspension (AVS); performance sport S+ drive mode.			●	●
High speed radar cruise control.	●	●	●	●
Driver monitor with eye open/close detection; Lane Keep Assist.				●
Aluminium sports style pedals; front and rear aluminium door scuff plates with black Lexus logo; aluminium and synthetic leather door trim, instrument panel and centre console box; dimpled leather gear lever and steering wheel.			●	
Smart key system with remote central door locking with answer back and panic functions; remote boot release function; alarm system with horn and intrusion sensor (alarm siren for F Sport and Limited).	●	●	●	●
Driver and passenger front, front and rear side, front and rear curtain shield and front knee airbags.	●	●	●	●
Blind spot monitoring system (BSM).	●	●	●	●
Leather seats with 10-way power adjustment front seats, drivers seat with driver memory settings, driver and passenger power lumbar support, front seat air conditioning and heaters, rear seat with boot access.	●	●		
F Sport style leather seats; front seats with 16-way driver power adjustment with memory settings, 10-way power adjustment for passenger front seat, driver and passenger power lumbar support; air conditioning and heaters; rear seat with boot access.			●	
Luxury style semi-aniline leather seats, front seats with 18-way adjustment; driver and front passenger memory system; passenger calf support ottoman; front headrests with vertical and butterfly adjustments; driver and passenger power front seat shoulder support, pelvic support, side support, cushion length adjustment, lumbar support with passenger 4-way, outer rear seat heaters.				●
Dual zone climate control air conditioning with auto recirculation; clean air filter with deodoriser.	●	●	●	
Three zone climate control air conditioning with auto recirculation; minus ion generator (nanoe).				●
3-spoke leather steering wheel (dimpled leather for F Sport) steering wheel controls (audio, phone, MID, voice, cruise control); power tilt and telescopic steering with memory; steering column retract and front seat slide easy entry system.	●	●	●	
3-spoke leather and wood steering wheel with heater; steering wheel controls (audio, telephone, MID, voice, active cruise control and Lane Keep Assist); power tilt and telescopic steering with memory; steering column retract and front seat slide easy entry system. woodgrain and synthetic leather instrument panel, door trim and centre console box.				●
Head Up Display (HUD) - colour with speed, audio, navigation, sport mode tachometer and ECO bar displays.			●	●
Audio system with AM/FM radio with single disc MP3/WMA CD/DVD player with 12 speakers, fully digital (Class-D) amplifier (299W); 8" EMV (Electro Multi-Vision).	●	●	●	
Mark Levinson GreenEdge fully digital (Class-D) amplifier (835W) with 17 GreenEdge speakers, 12.3" display screen (split screen display with navigation, info, setup, radio, media, climate and phone functions).				●
Bluetooth phone capability and audio streaming; audio and USB input jacks; antenna in rear window and roof display, trip information, Bluetooth telephone information, backing monitor, screen set-up, climate control air conditioning, audio functions, voice recognition, iPod cover art display; satellite navigation; Lexus remote touch.	●	●	●	●
Optitron instrument panel; 3.5" multi-information display; outside temperature display.	●	●	●	●
LED interior lighting; analogue clock with silver Lexus logo and LED illumination.	●	●	●	●
Automatic glare-resistant electro chromatic interior mirror.	●	●	●	●
Tinted laminated windscreen, rain-sensing windscreen wipers; side window defroster; rear window defroster.	●	●	●	●
Sun shades for rear window (electric), for rear doors (manual).			●	●
Rear armrest with LCD screen control panel for audio, climate control, seat heater and rear window sunshade controls, cup holders, box and convenience hook.				●
Rear air duct with woodgrain ornamentation.				●
Park assist system with front and rear sensors, back monitor with guidelines, parallel parking mode and reverse parking mode.	●	●	●	●
Rear view mirrors with indicator and puddle lights, automatic dimming and heaters.	●	●	●	●
Rear spoiler, F Sport emblems, F Sport bumpers and grille.			●	
Power trunk lid and easy closer system; tool kit, valet kit, warning triangle, first aid kit, non-slip luggage mat.	●	●	●	●
OPTION 71 MARK LEVINSON AUDIO / 12.3" DISPLAY SCREEN				
Mark Levinson GreenEdge fully digital (Class-D) amplifier (835W) with 17 GreenEdge speakers, 12.3" display screen (split screen display with navigation, info, setup, radio, media, climate and phone functions).			●	

GS SPECIFICATIONS: 300h / 300h F SPORT 450h / 450h F SPORT / 450h LIMITED

FACTS & FIGURES:			
Overall length:	4850mm	Drag Coefficient:	0.27
Overall width (mirrors folded):	1840mm	Gross vehicle weight (300h/450h):	2250/2325kg
Overall height:	1455mm	Kerb weight (300h/450h):	1735-1820/1825-1910kg
Wheelbase:	2850mm	Luggage capacity:	451L
Minimum ground clearance:	130mm	Towing capacity braked (300h/450h):	500/1500kg
		Towing capacity unbraked (300h/450h):	0/750kg

MECHANICAL FEATURES:

	GS300h	GS300h F Sport	GS450h	GS450h F Sport	GS450h Limited
2.5 litre double overhead cam 16 valve Atkinson cycle 4 cylinder petrol engine with dual VVT-i develops 133kW of power @ 6000rpm and 221Nm of torque @ 4200-5400rpm. Total System Output (Petrol Engine & Electric Motor) Maximum Power 164kW.	●	●			
Fuel consumption 5.2L/100km / CO ₂ emissions 121g/km*	●	●			
Motor Generator 1 - Permanent Magnet Synchronous A/C Motor functions as Generator and Engine Starter. Maximum System Voltage is DC 650 V. Water-cooled. Motor Generator 2 - Permanent Magnet Motor functions as Generator and Drives Rear Wheels. Maximum System Voltage DC 650 V. Maximum Power 105kW @ 5615-13000 rpm. Maximum Torque 300 Nm @ 0-4352 rpm.	●	●			
3.5 litre quad cam 24 valve Atkinson cycle V6 petrol engine with dual VVT-i develops 215kW of power @ 6000rpm and 352Nm of torque @ 4600rpm. Total System Output (Petrol Engine & Electric Motor) Maximum Power 254kW.			●	●	●
Fuel consumption 6.3L/100km / CO ₂ emissions 147g/km*			●	●	●
Motor Generator 1 - Permanent Magnet Synchronous A/C Motor functions as Generator and Engine Starter. Maximum System Voltage is DC 650 V. Water-cooled. Motor Generator 2 - Permanent Magnet Motor functions as Generator and Drives Rear Wheels. Maximum System Voltage DC 650 V. Maximum Power 147kW @ 5615-13000 rpm. Maximum Torque 275 Nm @ 0-4352 rpm.			●	●	●
95 octane is recommended. Tank capacity is 66 litres.	●	●	●	●	●
Electronic Continuously Variable Transmission (ECVT) with sequential shift programming, steering wheel paddle controlled sequential manual mode. Centre console drive mode selector for HV, snow, ECO, normal, sport (and sport + for F Sport).	●	●	●	●	●
Fully independent double wishbone front and multi-link rear suspension with stabiliser bars.	●	●	●	●	●
Adaptable Variable Suspension (AVS).			●	●	●
Electric Power Steering (EPS).	●	●	●	●	●
Power-assisted ventilated front and rear disc brakes.	●		●		●
Power-assisted ventilated front disc brakes with two piece rotor; power-assisted ventilated rear disc brakes.		●		●	
Anti-lock Braking System (ABS), Electronic Brake Force Distribution (EBD) and Brake Assist (BA). Electric parking brake with auto and manual modes. Brake hold system.	●	●	●	●	●
Vehicle Stability Control (VSC) and Traction Control (TRC) with on-off switch.	●	●	●	●	●
Vehicle Dynamics Integrated Management (VDIM).	●	●	●	●	●
Lexus Dynamic Handling System (LDH) with Dynamic Rear Steering (DRS), Variable Ratio Steering (VGRS) and Electric Power Steering (EPS).				●	
18" alloy wheels fitted with 235/45 R18 steel belted radial ply tyres. Temporary type spare steel wheel.	●		●		●
19" alloy wheels fitted with 235/40 R19 (front), 265/35 R19 (rear) steel belted radial ply tyres. Temporary type spare alloy wheel.		●		●	



18" alloy - GS300h, GS450h



18" alloy - GS450h Limited



19" alloy - GS300h F Sport, GS450h F Sport

*Fuel consumption and CO₂ information will vary depending on driving conditions/style, vehicle condition and optional accessories fitted - ECE101/00 standard.

FEATURES:	GS300h	GS300h F Sport	GS450h	GS450h F Sport	GS450h Limited
Bi-Xenon headlights with Adaptive Front-lighting System (AFS); headlight cleaners; headlight control system with auto on and off; LED daytime running lights; LED clearance lights.	●	●	●	●	
Active High Beam (AHB) headlights; LED headlights for GS450h Limited. Adaptive Front-lighting System (AFS); headlight cleaners; headlight control system with auto on and off; LED daytime running lights; LED clearance lights			●	●	●
Pre-crash safety system with pre-crash brake, pre-crash brake assist, all speed radar cruise control, pre-crash linked front seat belts with pre-tensioners and force limiters; alarm system siren (F Sport and Limited).	●	●	●	●	●
Adaptive Variable Suspension (AVS), Performance sport S+ drive mode.		●	●	●	●
Driver monitor with eye open/close detection; Lane Keep Assist.					●
Aluminium sports style pedals; front and rear aluminium door scuff plates with black Lexus logo; aluminium and synthetic leather door trim, instrument panel and centre console box; dimpled leather gear lever and steering wheel.		●		●	
Smart key system with remote central door locking with answer back and panic functions; remote boot release function; alarm system with horn and intrusion sensor (alarm siren for F Sport and Limited).	●	●	●	●	●
Driver and passenger front, front and rear side, front and rear curtain shield and front knee airbags.	●	●	●	●	●
Blind spot monitoring system (BSM).	●	●	●	●	●
Leather seats with 10-way power adjustment front seats, drivers seat with memory settings; driver and passenger power lumbar support; front seat air conditioning and heaters, rear seat with boot access.	●		●		
F Sport style leather seats; front seats with 16-way driver power adjustment with memory settings, 10-way power adjustment for passenger front seat; driver and passenger power lumbar support; air conditioning and heaters, rear seat with boot access.		●		●	
Luxury style semi-aniline leather seats, front seats with 18-way adjustment; driver and front passenger memory system; driver and passenger power lumbar support passenger calf support ottoman; front headrests with vertical and butterfly adjustments; driver and passenger power front seat shoulder support, pelvic support, side support, cushion length adjustment, outer rear seat heaters.					●
Dual zone climate control air conditioning with auto recirculation; clean air filter with deodoriser.	●	●	●	●	
Three zone climate control air conditioning with auto recirculation; minus ion generator (nanoe).					●
3-spoke leather steering wheel (dimpled leather for F Sport) with audio, phone, MID, voice and cruise control multi-function switches; power tilt and telescopic steering with memory; steering column retract and front seat slide easy entry system.	●	●	●	●	
3-spoke leather and wood steering wheel with heater; steering wheel controls (audio, telephone, MID, voice, active cruise control and Lane Keep Assist); power tilt and telescopic steering with memory; steering column retract and front seat slide easy entry system. Woodgrain and synthetic leather instrument panel, door trim and centre console box.					●
Head Up Display (HUD) - colour with speed, audio, navigation, sport mode tachometer and ECO bar displays.		●		●	●
Audio system with AM/FM radio with single disc MP3/WMA CD/DVD player with 12 speakers, fully digital (Class-D) amplifier (299W), Bluetooth phone capability and audio streaming; audio and USB input jacks; antenna in rear window and roof; 8" EMV (Electro Multi-Vision) display, trip information, Bluetooth telephone information, backing monitor, screen set-up, climate control air conditioning, audio functions, voice recognition, iPod cover art display; satellite navigation; Lexus remote touch.	●	●	●	●	
Mark Levinson GreenEdge fully digital (Class-D) amplifier (835W) with 17 GreenEdge speakers, 12.3" display screen (split screen display with navigation, info, setup, radio, media, climate and phone functions).					●
Optitron instrument panel; 3.5" multi-information display; outside temperature display.	●	●	●	●	●
LED interior lighting; analogue clock with silver Lexus logo and LED illumination.	●	●	●	●	●
Automatic glare-resistant electro chromatic interior mirror.	●	●	●	●	●
Tinted laminated windscreen, rain-sensing windscreen wipers; side window defroster; rear window defroster.	●	●	●	●	●
Sun shades for rear window (power), for rear doors (manual).		●		●	●
Rear armrest with LCD screen control panel for audio, climate control, seat heater and rear window sunshade controls, cup holders, box and convenience hook.					●
Rear air duct with woodgrain ornamentation.				●	
Park assist system with front and rear sensors, back monitor with guidelines, parallel parking mode and reverse parking mode.	●	●	●	●	●
Rear view mirrors with indicator and puddle lights, automatic dimming, heaters and Blind Spot Monitor (BSM).	●	●	●	●	●
Rear spoiler, F Sport emblems, F Sport bumpers and grille.		●		●	
Power trunk lid and easy closer system; tool kit, valet kit, warning triangle, first aid kit, non-slip luggage mat.	●	●	●	●	●

OPTION 71 MARK LEVINSON AUDIO / 12.3" DISPLAY SCREEN

Mark Levinson GreenEdge fully digital (Class-D) amplifier (835W) with 17 GreenEdge speakers, 12.3" display screen (split screen display with navigation, info, setup, radio, media, climate and phone functions).		●		●	
---	--	---	--	---	--

OUR RESPONSIBILITY TO THE FUTURE

Lexus is committed to offering state-of-the-art technologies which benefit people and society, such as hybrid powertrains that reduce fuel and exhaust emissions.

Lexus uses an environmental design assessment known as 'the Eco-Vehicle Assessment System' (Eco-VAS) to evaluate the vehicles' environmental footprint at every stage of its lifecycle - from its manufacture to use and disposal.

This approach has driven across-the-board refinements, including a dramatic reduction in the use of lead, innovative materials to replace hexavalent chromium, chlorine and PVC, and introducing components with superior recycling properties.

Every endeavour has been made to ensure text details and specifications contained in this publication were accurate as at 1 July, 2014. Lexus New Zealand reserves the right at any time to introduce any changes deemed necessary to improve the models shown or for any other reason. Paint, upholstery and interior trim colours shown in this brochure may differ from actual colours due to variations in printing processes. Some models shown in this brochure may have optional accessories fitted. For further information contact your nearest Authorised Lexus Dealer. They will be glad to assist.
Production effective September 2013.

500 • LEXUSGS8 • July 2014.





