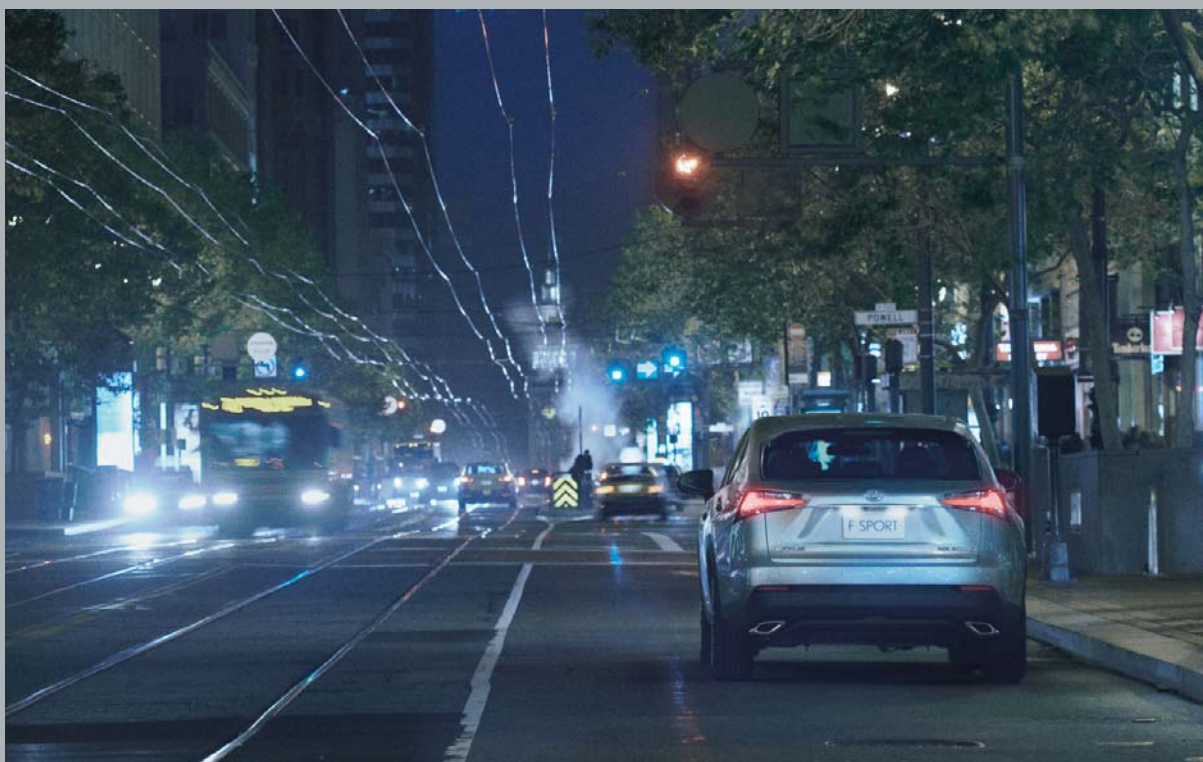




NX

NX200t / NX300h





<i>NX CONCEPT</i>	»» P6
<i>DESIGN</i>	»» P9
<i>PERFORMANCE</i>	»» P12
<i>FEATURES</i>	»» P17
<i>SAFETY</i>	»» P24
<i>F SPORT</i>	»» P26
<i>COLOURS</i>	»» P29
<i>SPECIFICATIONS</i>	»» P31







FOR EVERY SIDE OF YOU

NX Concept

Intriguing. Surprising. Charismatic. Playful. There are as many sides to the Lexus NX as there are to you.

And just like an exquisitely cut diamond, each facet catches the eye of the most discerning. Magical in its detail, unique in its personality and breathtaking at every turn, the Lexus NX is anything and everything you want it to be. The NX applies a bespoke philosophy to luxury SUVs. It features advanced technologies, excellent environmental performance and refined Lexus workmanship that provide outstanding quality and driving pleasure that can be personalised to your every whim.

Its sporty and athletic nature expresses a dynamic and active attitude that injects a performance-driven edge into driving, thanks to sport-honed acceleration, control and handling. It boasts a meticulous focus on refining every detail of the car to offer advanced functionality and effortless utility.

The result is a game-changing, urban-focused SUV with the acceleration, agility and handling to effortlessly negotiate city traffic, utility to meet the evolving needs of an active and dynamic lifestyle, and the sophisticated features and refined details that are hallmarks of Lexus perfection.

The all-new Lexus NX isn't just made. It's crafted. Sculpted lines complement your personal style, technology responds to your very presence and its attention to detail delivers an unparalleled sense of luxury the moment you get behind the wheel.

This immense focus on the details was applied to every facet of the NX's development, resulting in a striking example of form, function and performance.

From the signature L-finesse spindle and brilliant illumination of the LED headlamps to the warm hospitality extended by the innovative door handles that intuitively light up when it senses your presence, the sheer beauty of the NX is all around you. Inside the spacious cabin, the delight continues in the form of a sports-style analog meter design, placement and usability of each control, and even the subtle Lexus logo on the bolts on the sides of the center console.



EXPLORE BEAUTY

Design

Whether you prefer form or function, your design philosophy is as individual as that of the Lexus NX. At Lexus, we believe that even the smallest details should spark the imagination and create a unique driving experience for anyone behind the wheel.

The Lexus NX flaunts a sculpted chassis and bold, edgy lines that make it look more like a sports car than an SUV. Its dramatic presence looks as if it was cut from a single block of solid metal. As you move around the exterior, it intrigues with a constantly shifting series of solid surfaces that exude power and agility.

Starting with the signature Lexus spindle grille that creates an aggressive road presence, to the sculpted diamond-shaped body that captures light at

different angles, to flared wheel arches and large wheels that emphasize the car's firmly planted stance. The Lexus NX is both aggressive and futuristic.

The interior is equally inspiring; infusing the functional and structural beauty, ease-of-use and practical space demanded of an SUV, with the advanced performance-focused spirit of the Lexus LFA supercar. It embodies Lexus' human-oriented approach to driving, focusing on sports control to heighten driving exhilaration. Intuitive design is seen in the separation of the display and operation zones in the cockpit, while subtle details like the flowing horizontal lines of the instrument panel, and metallic frame of the center console, adds distinctive character to the look of the Lexus NX.

EXTERIOR

Achieve the perfect balance of sporty aggressiveness and sleek elegance with a sculpted chassis and smooth curves.



Triple-L-Shaped LED headlamps and Daytime Running Lights



Aggressive and muscular stance



Lexus signature "L" shaped LED combination lamps



Innovative outer mirror

INTERIOR

The blend of functional and structural beauty and luxe details in the sporty interior boosts your driving pleasure.



Intuitive Remote Touch Interface (RTI)



Exclusive modern analog clock seated within the centre console



Contrast Stitching on soft leather with aluminium trimmings



Woodgrain plate with satin polish finish (Shimamoku)



TURN PASSION INTO ADRENALINE

Performance

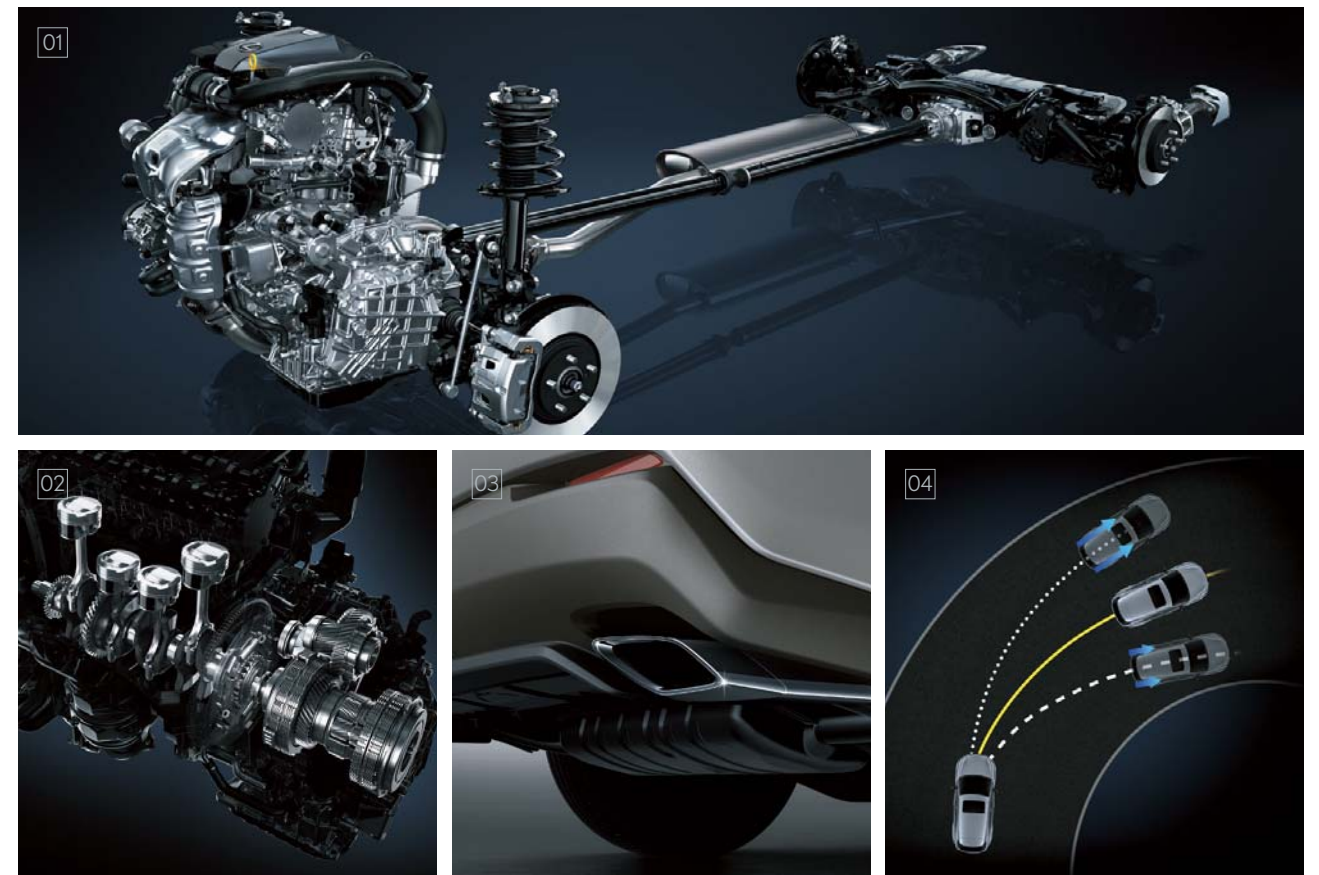
You don't have to be a full-time adrenaline junkie to demand heart-racing performance. From the freeway to the scenic route, the Lexus NX has been dynamically crafted to give you the ride of your life.

An intense focus on the rigidity of the body structure inspired the use of laser screw welding and body adhesives, creating a highly-rigid structure that provides an excellent performance platform.

An innovative pre-loaded differential also leveraged on this rigidity for precise steering. Together, they deliver agility and responsiveness that makes urban driving an ease.

An advanced turbocharged engine, lightweight construction and an outstanding power output is the recipe for sporty driving that's not at the expense of fuel economy. Hybrid models were also tuned to create a unique NX driving feel that is both exciting and satisfying, while innovative shift controls harness the hybrid characteristics to produce dynamic driving and excellent environmental performance.

PERFORMANCE (NX 200t)



01 / 2.0-litre Twin-scroll Turbocharged Engine

This newly-developed engine delivers a sophisticated fusion of exhilarating driving performance and excellent fuel efficiency. The compact high efficiency twin scroll turbocharger is combined with an Atkinson Cycle engine with Dual VVT-iW^{*1}. To realize optimum combustion, the innovative D-4ST^{*2} features both direct and port injectors. This advanced Lexus engineering helps generate high torque from low through to high rpm ranges, high level responsiveness, as well as enhancing fuel economy.

03 / Dual Exhaust Pipes

The unique shape of the dual exhaust pipes hints at the sporty power of the turbo engine. Seen from the side, their long proportions accentuate a sense of presence.

02 / 6 Super Electronic Controlled Transmission (ECT)

The newly-developed, super intelligent 6-speed automatic transmission calculates the required engine torque to deliver a high level of vehicle control in line with accelerator operation, together with a sophisticated acceleration feeling. Multi-mode Automatic Transmission and G AI-SHIFT^{*3} control further contribute to the car's driving pleasure.

04 / Dynamic Torque Control All-Wheel Drive (AWD)

The electronically-controlled system continually varies distribution of drive power to the rear wheels, switching from front-wheel drive to AWD to alter the car's handling stability to suit various driving conditions.

^{*1} VVT-iW: Variable Valve Timing-intelligent Wide.

^{*2} D-4ST: Direct-injection 4-stroke Superior-version with Turbo.

^{*3} AI: Artificial Intelligence.



01 / Hybrid System

For dynamic driving and exceptional environmental performance, Lexus Hybrid Drive intelligently combines the power of a highly-efficient 2.5-litre petrol engine with electric power from a high-output motor.

03 / Metallic Fins

On Hybrid variants, metallic fins positioned on the underside of the lower rear bumper create a clean and sleek look.

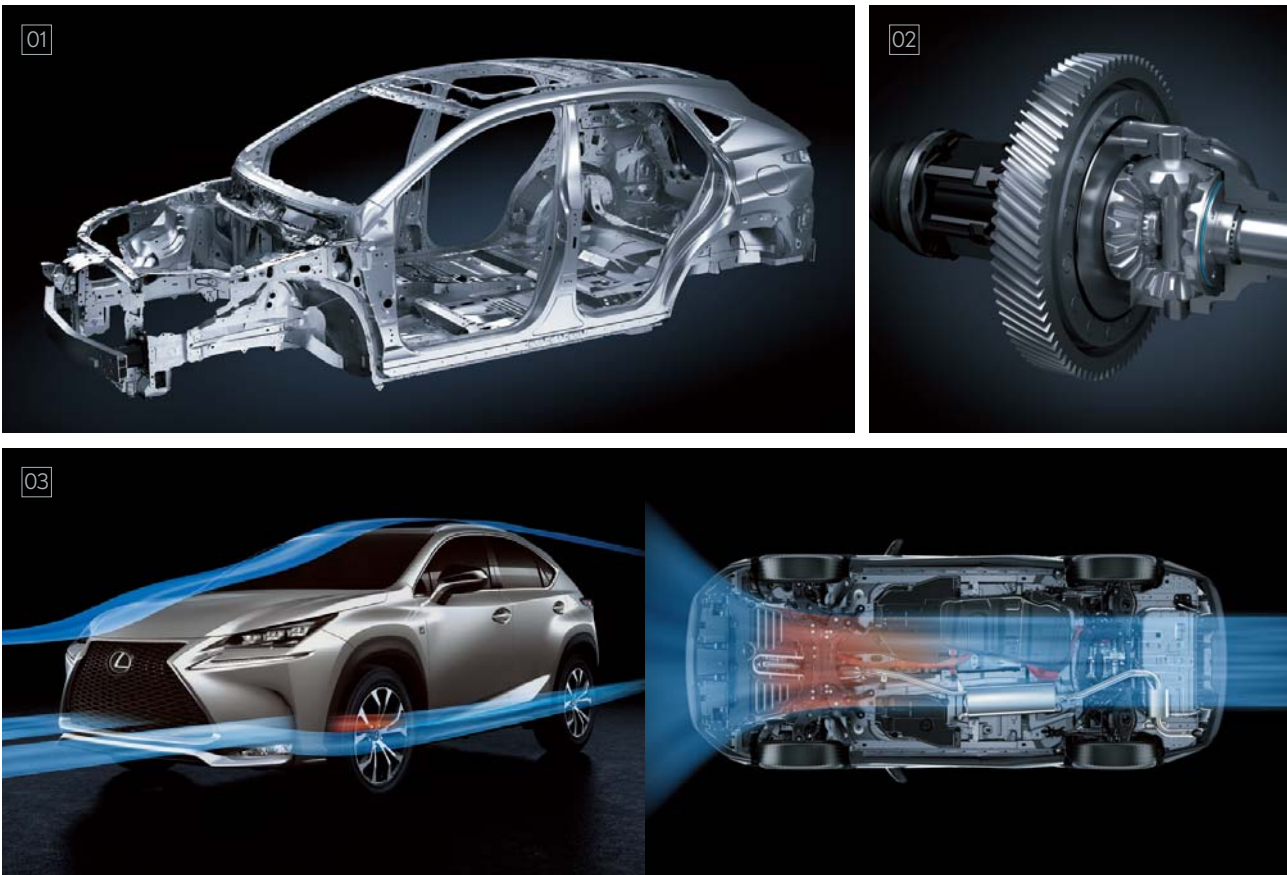
02 / 2.5-litre 4-cylinder Engine

The compact and lightweight Atkinson Cycle engine with VVT-i*¹ delivers high performance together with excellent fuel efficiency, quiet operation and significantly reduced emissions.

04 / Electric Four-wheel Drive (E-Four)

E-Four uses a rear motor that operates independently from the front motor to optimize distribution of front and rear drive force, delivering excellent vehicle stability in a wide range of driving situations.

*¹ VVT-i: Variable Valve Timing-intelligent.



01 / Chassis

The foundation of the NX's responsive sporty handling is a lightweight, high rigidity body structure. The use of innovative production technologies including laser screw welding and body adhesives, together with extensive spot welding, enhances the rigidity of panel joints, and contributes to the excellent handling, refined comfort and quiet ride.

02 / Pre-loaded Differential

This innovative differential pre-loads torque under light loads or low rotational speed, contributing to highly precise steering for excellent straight-line stability and acceleration performance.

03 / Aerodynamics

The NX's superb aerodynamics contributes to fuel-efficient performance and quiet comfort in the cabin, even during high-speed driving. Careful attention was also paid to reduce drag - including introducing an integrated rear spoiler - to contribute to a smoother airflow.

PERFORMANCE



04 / 05 Front and Rear Suspension

Each shock absorber component is refined to help maintain agile handling together with excellent ride comfort.

The compact and highly rigid MacPherson strut front suspension and double wishbone rear suspension were optimised to deliver agile handling and luxurious ride comfort.

06 / Drive Mode Select

Drive mode select lets you tune the car's performance to suit your driving style. You can select and change between four modes: Normal, Eco, Sport and Sport+*¹ modes.

*¹ Sport+ mode is applicable for F SPORT only.



SATISFY YOUR APPETITE FOR THE ROADS

Features

The NX blends luxurious design details with practical functionality of a spacious cabin. The edgy lines of the sculpted body and its poised presence makes the Lexus NX unmistakable on the road. A closer look reveals highly-refined luxury touches seen in the bold LED headlamps, subtle hospitality integrated into the illumination of the door handles, and the practical versatility of ample luggage space, each of which enhances the enjoyment of daily driving.

The same degree of refinement is seen in the driver-focused design of the cabin and the meticulous selection, placement and ease-of-use of each feature. The touch sensitive switches in the overhead console, thoughtful positioning of the handy storage, and convenient tray for smartphones, all come together to create a driving experience that is both intuitive and effortless for you.



01 / Triple-L-Shaped LED Headlamps^{*1}
The eye-catching design of the 3-eye, energy-efficient LED lamps creates an L-shaped illumination that lights up the night. Together with the distinctive L-shape of the LED Daytime Running Lights, the NX sports an iconic Lexus design that dominates the roads.

03 / LED Front Fog Lamps^{*1}
LED lamps integrated into the front bumper reduce power consumption while providing a bright beam, contributing to excellent visibility for safe driving in low light and nighttime conditions.

02 / LED Headlamps^{*2}
They generate a bright light for excellent visibility at night, while reducing power consumption. The L-shaped LED Daytime Running Lights also emits a subtle Lexus signature.

04 / LED Rear Combination Lamps
The distinctive Lexus L-shaped lamps look like a brilliant crystal, even in daytime. The innovative construction ensures consistent and seamless illumination is provided by the energy-efficient LEDs to the side and back.

^{*1} Applicable for Premium, Luxury, F SPORT & Hybrid.
^{*2} Not applicable for Premium, Luxury, F SPORT & Hybrid.

05 / Door Mirrors
Combining form and function, the sculptured door mirrors embody the strength and luxury of the NX's exterior design, reduce wind noise through excellent aerodynamics and provide an excellent field of view.

07 / Moonroof^{*3}
The low profile moonroof expands the feeling of space in the cabin. It opens and closes and tilts up and down at the touch of a button. Fins integrated on the deflector help to reduce wind noise.

06 / Rear Spoiler
The spoiler integrated into the top of the back door enhances aerodynamic performance. Its body color forms a seamless extension of the roofline that accentuates the NX's edgy sporty styling.

08 / Panoramic Roof^{*4}
Allows ample light into the cabin to provide a sense of comfort and openness.

09 / Door Handles
The refined design displays a warm hospitality. The dynamic shape is easy to grip. A brightened silhouette line and integrated foot area illumination on the handles guide you at night, then gently fade.

^{*3} Applicable for Luxury only.
^{*4} Applicable for F SPORT only.



01 / Luggage Space
The ample capacity of the luggage space highlights the practical convenience and smart design of the cabin. The back door opens wide to provide easy access to a flexible space that can accommodate three full-set of golf bags, or different sizes and combinations of suitcases, while providing spacious seating for passengers in the rear seats.



02 / Power Back Door^{*1}
Convenient controls for the power door are set in the instrument panel and Electronic Key, as well as a closing switch in the bottom of the door.

03 / Power Rear Seats^{*2}
Enhancing versatility and convenience, the rear seats can be reclined, folded flat or upright at the touch of a button integrated into each seat, in the luggage space, and the driver's side instrument panel.

^{*1} Applicable for Premium, Luxury, F SPORT & Hybrid.
^{*2} Applicable for Premium, Luxury & Hybrid.



Image shown is for Luxury



Image shown is for Hybrid



04 / Overhead Console Lamp with Touch Switches
Refined hospitality extends to the intuitive operation of the front dome and map lamps in the overhead console, with touch switches that detect finger proximity to turn the appropriate lamp on or off.

06 / Seat Ventilation^{*1}
Ventilated front seats have fans in the seat cushions that help provide comfort regardless of the weather.

08 / Sunglasses Holder
The sunglasses holder is conveniently located under the palm rest. The removable magnetic lid stores away in the center console box. A flocked surface inside the holder also protects your sunglasses against scratching.



05 / Wireless Charger^{*1}
This thoughtful charging tray in the center console box enables wireless charging of batteries in Qi-compatible smartphones and electronic devices simply by placing them on the charger tray.

07 / Smart Card Key^{*1}
Ultra Thin Smart Card Key that functions the same as smart entry system, which offers greater portability as it is small enough to fit in a wallet or pocket.

09 / Cupholders
The cupholders for the front seats can hold two drink bottles or a handled mug. The grip of the cupholder mats also makes it easier for you to open a bottle lid with one hand while you are driving.

^{*1} Applicable for Premium, Luxury, F SPORT & Hybrid.



01 / Multimedia Coordination Function with Navigation*¹
This function coordinates the display of information from the multimedia systems on the 7-inch display in the center of the instrument panel and the 4.2-inch color Thin Film Transistor (TFT) multi-information display in the meter cluster. For convenience, audio system information, incoming mobile calls and some navigation on the 7-inch display can also be displayed on the multi-information display, and controlled using switches on the steering wheel.

02 / Meters
The 4-dial meter combines a three-dimensional analog speedometer and tachometer with a digital multi-information display that changes between blue and red illumination to highlight the drive mode selected.

^{*1} Navigation system is only applicable for Luxury, F SPORT & Hybrid.



03 / Remote Touch Interface (Display Audio Type)*²
Minimizes the effort to select or change audio features via easy turning of the knob or pressing of the button.

04 / Remote Touch Interface (Touch Pad Type)*³
Simple touchpad operation lets users interact intuitively with the navigation and audio systems on the 7-inch display, providing easy control of the systems.

05 / Mark Levinson® Audio System*⁴
The Mark Levinson Premium Surround Sound System features a compact 12-channel amplifier to drive 14 GreenEdge ultra-high efficiency speakers that generate outstanding output while significantly reducing energy consumption. A 5.1/7.1-channel surround system contributes to delivering a high fidelity, concert hall-quality sound. The Auto Volume System also intuitively adjusts the audio system volume to complement the genre of each song that is played.

^{*2} Not applicable for Luxury, F SPORT and Hybrid.
^{*3} Applicable for Luxury, F SPORT and Hybrid.
^{*4} Applicable for F SPORT and Hybrid.



YOUR SAFETY IS OUR PRIORITY

Safety

The NX embraces the use of advanced technologies to help ensure the safety of you and your passengers by adopting leading-edge measures to actively avoid and prevent accidents. Features include a panoramic view monitor and Rear Cross Traffic Alert (RCTA). The Blind Spot Monitor System also uses advanced camera and radar technologies to enhance driver awareness of other vehicles and obstacles in various driving situations, while the Drive-start Control function controls power output while accelerating, helping to avoid a collision.

In the event of an accident, occupant protection is integrated into the design of the NX, with a high rigidity body structure all around the car that is designed to help disperse crash energy and a high-strength body frame to help suppress distortion of the cabin. Inside the cabin, Supplemental Restraint System (SRS) airbags help reduce the impact to occupants in a collision. Whiplash Injury Lessening (WIL) concept front seats also help to reduce injury to the neck in the event of a rear-end collision.

SAFETY



01 / Blind Spot Monitor System^{*1}

When the quasi-millimeter-wave radars in the rear bumper detect vehicles in adjacent lanes that aren't visible in the door mirrors, the system activates a warning indicator in the relevant door mirror the moment a vehicle enters this blind spot.

03 / Panoramic View Monitor^{*2}

To help check the surroundings, the system shows a bird's-eye view of the vehicle on the display, using a composite image taken by cameras mounted on the front, sides and rear of the vehicle.

05 / SRS Airbags^{*3}

The NX features dual-stage SRS airbags (Front seats), SRS knee airbag (Driver's seat), SRS cushion airbag (Front passenger's seat) that supports seatbelt restraint by lifting the front edge of the seat cushion during a frontal collision, SRS side airbags (Front seats) and SRS curtain shield airbags (Front and rear door windows).

02 / Rear Cross Traffic Alert (RCTA)^{*1}

To assist safe reversing, RCTA uses quasi-millimeter-wave radars in the rear bumper to detect approaching vehicles in difficult-to-see areas behind the vehicle. When an approaching vehicle is detected, RCTA alerts the driver using a buzzer and indicator in the relevant door mirror.

04 / Cornering Front Fog Lamps^{*1}

Wide-angle cornering lamps provide additional illumination in the direction of travel, to the side and above, which enhances pedestrian visibility when turning at intersections.

^{*1} Applicable for Premium, Luxury, F SPORT and Hybrid.

^{*2} Applicable for Luxury, F SPORT and Hybrid.
The area the cameras can show is limited.
To help ensure safety, be sure to visually check your surroundings before you proceed.

^{*3} The Supplemental Restraint System (SRS) airbags are supplemental devices to be used with the seatbelts. The driver and all passengers in the vehicle must wear their seatbelts properly at all times. Never install a rear-facing Child Restraint System (CRS) on the front passenger's seat. For a forward-facing CRS, it is recommended you use it in the rear seats. Please do not use accessories for the seats which cover the parts where the SRS side airbags should inflate. Such accessories may prevent the SRS side airbags from activating correctly, causing serious injury (Lexus genuine seat covers are specifically designed for models equipped with the SRS side airbags. To find out about availability in your area, please inquire at your local dealer). The photo shows all the SRS airbags activated for display purposes only (the SRS side and curtain shield airbags only inflate on the side of the collision in an actual accident). For details on these and other important safety features, be sure to read the Owner's Manual carefully.



BORN AN SUV RAISED BY SPORTS CARS

F SPORT

Never before has an SUV had the pedigree to dominate the road. Introducing the exclusive F SPORT package that injects razor-sharp sports performance into the NX driving experience.

Evolved from the first IS F and groundbreaking LFA supercar, Lexus F DNA drives the development of all F SPORT models. You'll recognise it in the distinctive 18-inch aluminum wheels, the signature grille mesh and the metallic-coated lower bumper that visually lowers the car's center of gravity. As you take the wheel, the feeling of sports driving control is compelling and immediate.

The extra support of the seat, dimpled leather steering wheel, custom sports meters that evoke the LFA supercar, G sensor and turbo boost meter displays come together to create an authentic sporty driving experience.

F SPORT exhilaration is also created by fine-tuning the front and rear suspension, fitting of Adaptive Variable Suspension (AVS) system and installing front and rear performance dampers that heighten responsiveness and handling stability.



A/ Front Mesh Grille & Front Bumper
Distinctive honeycomb spindle grille and unique bumper for a bold and assertive design statement.

B/ Aluminum Wheels
Light and strong forged aluminum wheels with an F SPORT embossed centre cap.

C/ Door Mirrors
Exclusive outer mirrors to further enhance the aggressive F SPORT image.

D/ Front Fender Emblems
Distinctively placed at the sides of the Lexus F SPORT, the iconic F SPORT emblem is a mark of sportiness within the car.



E/ Steering Wheel
Perforated leather steering wheel, with an F SPORT logo at its base.

F/ Aluminum Pedals
Drilled aluminum pedals for better grip and responsiveness.

G/ Shift Lever Knob
Exclusive shift knob with leather dimpled wrapping further accentuates the sporty impression.

H/ Trim (Metal Film)
The thinly machined metal film is finished with a fine 3D-patterned surface, creating a sophisticated visual depth that adds a subtle sporting aura to the interior.

I/ Scuff Plates
The black Lexus logo inscribed in the scuff plates project an aggressive image of sports performance.



01 / Performance Dampers

Performance dampers integrated into the front and rear of the NX F SPORT enhance rigidity and vibration damping performance, realizing exceptional handling stability that is at the heart of sports driving enjoyment.

03 / F SPORT Meters

Expressing dynamic sports performance, the exclusive analog meters feature full-length illuminated needles, silver needle rings and distinctive white scales that evolved from the Lexus LFA supercar.

02 / F SPORT Front Seats

The front sports seats blend refined comfort with firm support and excellent holding performance for sports driving. An innovative 'integrated foaming' manufacturing process also eliminates wrinkling the upholstery.

04 / F SPORT Multi-information Display

The multi-information display heightens your driving experience by displaying a G sensor with steering angle, accelerator opening and brake hydraulic pressure bars and a turbo boost meter with oil temperature and pressure gauges.

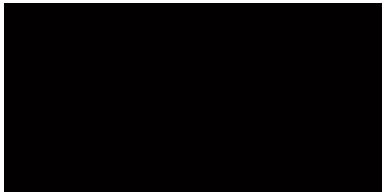


EXTERIOR

Colours



Platinum Silver ME. (1J4)
*Not applicable for F SPORT



Fire Agate MM. (4V3)
*Not applicable for F SPORT



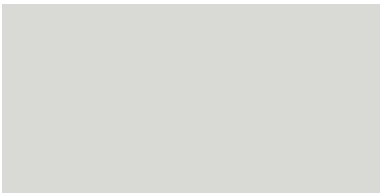
Red MC. CS. (3R1)



Starlight Black GF. (217)



Sonic Titanium (1J7)



Sonic Quartz (085)



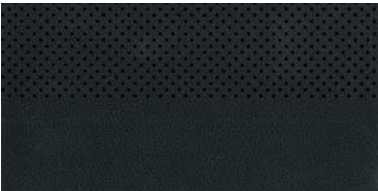
Exceed Blue ME. (8U1)
*Exclusive for F SPORT only

Exterior Color	Code	NX 200t	NX 200t Premium	NX 200t Luxury	NX 200t F SPORT	NX 300h
Sonic Quartz	085	●	●	●	●	●
Sonic Titanium	1J7	●	●	●	●	●
Starlight Black GF.	217	●	●	●	●	●
Red MC. CS.	3R1	●	●	●	●	●
Platinum Silver	1J4	●	●	●	—	●
Fire Agate Mica Metallic	4V3	●	●	●	—	●
Exceed Blue ME.	8U1	—	—	—	●	—

INTERIOR

Colours

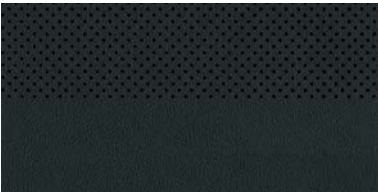
INTERIOR



Black (EA22)



Topaz Brown (EA52)



Black (LA20)



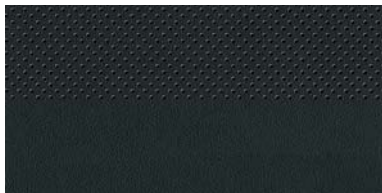
Garnet (LA30)



Saddle Tan (LA40)



Dark Rose (LB95)



Black + Dark Rose (LB94)

TRIM



Silver Film



Dark Film



Wood Film

Interior / Trim Color	Code	NX 200t	NX 200t Premium	NX 200t Luxury	NX 200t F SPORT	NX 300h
Black / Silver Film	EA22	●	—	—	—	—
Topaz Brown / Silver Film	EA52	●	—	—	—	—
Black / Wood	LA20	—	●	●	—	●
Black / Garnet / Wood	LA30	—	●	●	—	●
Black / Saddle Tan / Wood	LA40	—	●	●	—	●
F SPORT Dark Rose / Film	LB95	—	—	—	●	—
F SPORT Black + Dark Rose / Film	LB94	—	—	—	●	—

SPECIFICATIONS

SPECIFICATIONS		NX 200t	NX 200t Premium	NX 200t Luxury	NX 200t F SPORT	NX 300h
Type		In-line 4, 16-valves, Twin-scroll Turbocharger	In-line 4, 16-valves, Twin-scroll Turbocharger	In-line 4, 16-valves, Twin-scroll Turbocharger	In-line 4, 16-valves, Twin-scroll Turbocharger	In-line 4, 16-valves Atkinson Cycle Engine
Displacement	cc	1,998	1,998	1,998	1,998	2,494
Bore & Stroke	mm	86 x 86	86 x 86	86 x 86	86 x 86	90 x 98
Compression Ratio		10.0:1	10.0:1	10.0:1	10.0:1	12.5:1
Max. Power	hp/rpm	235 / 4,800 - 5,600	235 / 4,800 - 5,600	235 / 4,800 - 5,600	235 / 4,800 - 5,600	153 / 5,700
Max. Torque	Nm/rpm	350 / 1,650 - 4,000	350 / 1,650 - 4,000	350 / 1,650 - 4,000	350 / 1,650 - 4,000	210 / 4,200 - 4,400

HYBRID PERFORMANCE						
System Combined Output	kW (hp)	N/A	N/A	N/A	N/A	147 (197)
Front Motor						
• Max Output	kW (hp)	N/A	N/A	N/A	N/A	105 (141)
• Max Torque	Nm	N/A	N/A	N/A	N/A	270
Rear Motor						
• Max Output	kW (hp)	N/A	N/A	N/A	N/A	50 (67)
• Max Torque	Nm	N/A	N/A	N/A	N/A	139

PERFORMANCE						
Acceleration 0-100 km/h	sec	7.1	7.1	7.1	7.1	9.2
Top Speed	km/h	200	200	200	200	180

TRANSMISSION						
Transmission		6-speed A/T, Super ECT with AI Shift	6-speed A/T, Super ECT with AI Shift	6-speed A/T, Super ECT with AI Shift	6-speed A/T, Super ECT with AI Shift	Electronically Controlled Continuously Variable Transmission (E-CVT)
Drive System		AWD	AWD	AWD	AWD	AWD

CHASSIS						
Suspension						
• Front		MacPherson Strut	MacPherson Strut	MacPherson Strut	MacPherson Strut (Sport Suspension)	MacPherson Strut
• Rear		Trailing Arm Type Double Wishbone	Trailing Arm Type Double Wishbone	Trailing Arm Type Double Wishbone	Trailing Arm Type Double Wishbone (Sport Suspension)	Trailing Arm Type Double Wishbone

Brakes						
• Front		Ventilated Disc	Ventilated Disc	Ventilated Disc	Ventilated Disc	Ventilated Disc
• Rear		Solid Disc	Solid Disc	Solid Disc	Solid Disc	Solid Disc
Regenerative Braking		W/O	W/O	W/O	W/O	With
Auto Start / Stop System		W/O	W/O	W/O	W/O	With (Hybrid Eco Start/Stop)

Steering		EPS	EPS	EPS	EPS	EPS
Adaptive Variable Suspension		W/O	W/O	W/O	With	W/O
Performance Rods		W/O	W/O	W/O	With	W/O
Tyres		225/65 R17	225/60 R18	225/60 R18	235/55 R18	225/60 R18
Spare Tyres		Temp (165/80 D17)	Temp (165/80 D17)	Temp (165/80 D17)	Temp (165/80 D17)	Temp (165/80 D17)
Wheels		AS 17" x 7.0J	SM 18" x 7.5J	SM 18" x 7.5J	SM 18" x 7.5J	SM 18" x 7.5J

DIMENSIONS & WEIGHT		NX 200t	NX 200t Premium	NX 200t Luxury	NX 200t F SPORT	NX 300h
Overall						
• Length	mm	4,630	4,630	4,630	4,630	4,630
• Width	mm	1,845	1,845	1,845	1,845	1,845
• Height	mm	1,630	1,630	1,630	1,630	1,630
• Wheelbase	mm	2,660	2,660	2,660	2,660	2,660
Tread						
• Front	mm	1,580	1,570	1,570	1,570	1,570
• Rear	mm	1,580	1,570	1,570	1,570	1,570
Kerb Weight	kg	1,860	1,860	1,860	1,860	1,895
Gross Vehicle Weight	kg	2,350	2,350	2,350	2,350	2,385
Min. Ground Clearance	mm	190	190	190	190	185
Boot Capacity	Litre	500	500	500	500	475
Fuel Tank Capacity	Litre	60	60	60	60	56
Min. Turning Radius	m	5.7	5.7	5.7	5.7	5.7
EXTERIOR						
Headlamps						
• Type		LED	Triple-L-Shaped LED	Triple-L-Shaped LED	Triple-L-Shaped LED	Triple-L-Shaped LED
• Leveling		Auto	Auto	Auto	Auto	Auto
• Washer		With	With	With	With	With
Daytime Running Lights		LED	LED	LED	LED	LED
Front Fog Lamps		W/O	With (Cornering Function)	With (Cornering Function)	With (Cornering Function)	With (Cornering Function)
Rear Fog Lamps		With	With	With	With	With
Rear Combination Lamps		With (LED Stop & Tail Lamps)	With (LED Stop & Tail Lamps)	With (LED Stop & Tail Lamps)	With (LED Stop & Tail Lamps)	With (LED Stop & Tail Lamps)
Wiper						
• Rain Sensor		W/O	With	With	With	With
• Intermittent Wiper		With	With	With	With	With
Side Mirror		Power Retractable with Heater	Auto Fold & Retract, Electro Chromic, Heater with Memory	Auto Fold & Retract, Electro Chromic, Heater with Memory	Auto Fold & Retract, Electro Chromic, Heater with Memory	Auto Fold & Retract, Electro Chromic, Heater with Memory
Panoramic Roof		W/O	W/O	Moonroof	Panoramic Roof	W/O
Rear Spoiler		With	With	With	With	With
Rear Wiper		With	With	With	With	With
Power Back Door		W/O	With	With	With	With
Roof Rails		W/O	W/O	W/O	W/O	With
Smart Entry		With	With additional Smart Card Key	With additional Smart Card Key	With additional Smart Card Key	With additional Smart Card Key

INTERIOR	NX 200t	NX 200t Premium	NX 200t Luxury	NX 200t F SPORT	NX 300h
Finishing	Leather & Film	Leather & Wood	Leather & Wood	F SPORT Leather & Film	Leather & Wood
Steering					
• Type (Column)	Power	Power	Power	Power	Power
• Material	Leather	Leather	Leather	F SPORT Leather	Leather
• Shift Paddles	With	With	With	With	With
• Multi Function Switch	With	With	With	With	With
Smart Start System	With	With	With	With	With
Meter Combination Illumination	With	With	With	With	With
Illumination Entry System	With	With	With	With	With
Multi Information Display (MID)	With (4.2")	With (4.2")	With (4.2")	With (4.2")	With (4.2")
Drive Mode	ECO / NORMAL / SPORT	ECO / NORMAL / SPORT	ECO / NORMAL / SPORT	ECO / NORMAL / SPORT / SPORT+	ECO / NORMAL / SPORT / EV
Cruise Control					
Air-Conditioner	Dual-Zone	Dual-Zone	Dual-Zone	Dual-Zone	Dual-Zone
Aircond Rear Duct	With	With	With	With	With
Inside Rear View Mirror	Manual	Electro Chromic	Electro Chromic	Electro Chromic	Electro Chromic
Lamps					
• Front Personal Lamp	With	With	With	With	With
• Luggage Room Lamp	With	With	With	With	With
• Room Lamp	With	With	With	With	With
• Glove Box Lamp	With	With	With	With	With
Front Sun Visor	With Vanity Mirror, Vanity Lamps & Ticket Holder	With Vanity Mirror, Vanity Lamps & Ticket Holder	With Vanity Mirror, Vanity Lamps & Ticket Holder	With Vanity Mirror, Vanity Lamps & Ticket Holder	With Vanity Mirror, Vanity Lamps & Ticket Holder
Parking Brake	Electric Parking Brake	Electric Parking Brake	Electric Parking Brake	Electric Parking Brake	Electric Parking Brake
Power Window	With (Auto Up & Down)	With (Auto Up & Down)	With (Auto Up & Down)	With (Auto Up & Down)	With (Auto Up & Down)
Clock	Analog	Analog	Analog	Analog	Analog
Audio System	Lexus Premium Audio, 8-speakers, AM/FM, MP3, WMA & JPEG	Lexus Premium Audio, 8-speakers, AM/FM, MP3, WMA & JPEG	Lexus Premium Audio, 10-speakers, MP3, WMA, AM/FM, AAC, MP4, M4V, WMV, AVI & JPEG	Mark Levinson, 14-speakers, MP3, WMA, AM/FM, AAC, MP4, M4V, WMV, AVI & JPEG	Mark Levinson, 14-speakers, MP3, WMA, AM/FM, AAC, MP4, M4V, WMV, AVI & JPEG
Display Screen	With (7-inch)	With (7-inch)	With (7-inch)	With (7-inch)	With (7-inch)
Remote Touch Controller	With (Display Audio Type)	With (Display Audio Type)	With (Touch Pad Type)	With (Touch Pad Type)	With (Touch Pad Type)
Navigation System	W/O	W/O	With	With	With
Wireless Charger	W/O	With	With	With	With
External Audio Terminal	1 USB Port / 1 AUX / Bluetooth	1 USB Port / 1 AUX / Bluetooth	2 USB Ports / 1SD Card Slot / 1AUX / Bluetooth	2 USB Ports / 1SD Card Slot / 1AUX / Bluetooth	2 USB Ports / 1SD Card Slot / 1AUX / Bluetooth

INTERIOR	NX 200t	NX 200t Premium	NX 200t Luxury	NX 200t F SPORT	NX 300h
Seat Materials	Synthetic Leather	Smooth Leather	Smooth Leather	F SPORT Leather	Smooth Leather
Front Seat Type	Sport Seat	Sport Seat	Sport Seat	F SPORT Seat	Sport Seat
• Power Adjustment	D: Power 8-way ; P: Power 8-way	D: Power 10-way ; P: Power 8-way	D: Power 10-way ; P: Power 8-way	D: Power 10-way ; P: Power 8-way	D: Power 10-way ; P: Power 8-way
• Slide Adjuster	2-way	2-way	2-way	2-way	2-way
• Vertical Adjuster	2-way	2-way	2-way	2-way	2-way
• Height Adjuster	4-way	4-way	4-way	4-way	4-way
• Memory Function	W/O	Driver only (3 Memory)	Driver only (3 Memory)	Driver only (3 Memory)	Driver only (3 Memory)
• Lumbar Support	W/O	2-way (Driver only)	2-way (Driver only)	2-way (Driver only)	2-way (Driver only)
• Ventilation	W/O	With (Ventilation + Heater)	With (Ventilation + Heater)	With (Ventilation + Heater)	With (Ventilation + Heater)
Rear Seat Folding	60:40 Split	60 : 40 Split (With Power)	60 : 40 Split (With Power)	60 : 40 Split	60 : 40 Split (With Power)
Shift Level / Knob	Leather	Leather	Leather	F SPORT Leather	Leather
Storage					
• Glove Compartment	With	With	With	With	With
• Sun Glass Case	With	With	With	With	With
• Central Console	With	With	With	With	With
• Cup / Bottle Holders	With	With	With	With	With
• Back Pocket	With (D + P)	With (D + P)	With (D + P)	With (D + P)	With (D + P)
• Rear Seat Armrest	With	With	With	With	With
Pedals	Normal	Normal	Normal	F SPORT Type	Normal
Scuff Plate	With	With	With	F SPORT Type	With
SAFETY					
(Active)					
Anti-lock Braking System (ABS)	With	With	With	With	With
Brake Assist (BA)	With	With	With	With	With
Vehicle Stability Control System (VSC)	With	With	With	With	With
Traction Control (TRC)	With	With	With	With	With
Electronic Brake-force Distribution (EBD)	With	With	With	With	With
Hill-start Assist	With	With	With	With	With
Front & Rear Parking Sensor	With	With	With	With	With
Blind Spot Monitor (BSM)	W/O	With	With	With	With
Rear Cross Traffic Alert (RCTA)	W/O	With	With	With	With
Rear View Camera	With	With	With (Panoramic View Monitor)	With (Panoramic View Monitor)	With (Panoramic View Monitor)
(Passive)					
SRS Airbags	8 (Including Driver Knee Airbag & Front Passenger Cushion Airbag)	8 (Including Driver Knee Airbag & Front Passenger Cushion Airbag)	8 (Including Driver Knee Airbag & Front Passenger Cushion Airbag)	8 (Including Driver Knee Airbag & Front Passenger Cushion Airbag)	8 (Including Driver Knee Airbag & Front Passenger Cushion Airbag)
Whiplash Injury Lessening Seats	With	With	With	With	With
Seatbelts					
• Front	3 point PFT	3 point PFT	3 point PFT	3 point PFT	3 point PFT
• Rear	3 point ELR	3 point ELR	3 point ELR	3 point ELR	3 point ELR
Height Adjustable Seatbelt Anchor	With	With	With	With	With
ISOFIX Child Seat	With (Outer Rear Seat)	With (Outer Rear Seat)	With (Outer Rear Seat)	With (Outer Rear Seat)	With (Outer Rear Seat)
SECURITY					
Alarm System	Immobilizer, Siren with Back-up Battery, Intrusion & Tilt Sensor and Glass Break Sensor	Immobilizer, Siren with Back-up Battery, Intrusion & Tilt Sensor and Glass Break Sensor	Immobilizer, Siren with Back-up Battery, Intrusion & Tilt Sensor and Glass Break Sensor	Immobilizer, Siren with Back-up Battery, Intrusion & Tilt Sensor and Glass Break Sensor	Immobilizer, Siren with Back-up Battery, Intrusion & Tilt Sensor and Glass Break Sensor



OWNING A LEXUS IS A JOURNEY
IN ITSELF, ONE THAT IS JUDGED
NOT BY MILEAGE BUT BY THE
COUNTLESS PRICELESS MOMENTS.

BEGIN YOUR JOURNEY THE RIGHT WAY WITH QUALITY SERVICES DESIGNED TO ENHANCE YOUR LEXUS EXPERIENCE.

LEXUS | CAPITAL SERVICES

LEXUS believes that perfection lies in the details. When you purchase a LEXUS, you will experience service like no other. LEXUS CAPITAL offers you flexible financial services that enable you to be in full control of your finances, as always. Applying for financing can be handled quickly and conveniently at all LEXUS showrooms.

LEXUS | ASSIST

LEXUS ASSIST is a 24-hour roadside assistance service provided by LEXUS. You're assured of reliable assistance via this exclusive programme aimed at creating a hassle-free driving experience.

LEXUS | INSURANCE

LEXUS INSURANCE is a comprehensive motor insurance packaged by LEXUS to provide LEXUS owners with tailored insurance coverage for damages to the owner's vehicle as well as any liabilities incurred by the third party.

LEXUS | ACCESS

LEXUS ACCESS is a comprehensive vehicle leasing programme designed to bring you even closer to driving a LEXUS. Complementing our Flexi Plan and Islamic Financing Plan, LEXUS ACCESS offers you yet another option to experience the perfection embodied by a LEXUS.

- Note:
- LEXUS MALAYSIA, a division of UMW Toyota Motor Sdn. Bhd. reserves the right to alter any details of specifications and equipment without notice. Details of specifications and equipment are also subject to change to suit local condition and requirements.
 - Vehicle, equipment and specifications pictured in this catalogue may vary from models available locally.
 - Vehicle body and accessory colours might differ slightly from the printed photos in the leaflet.
 - 3-year warranty from the date of first registration or 100,000km travelled, whichever occurs first. Terms and conditions apply.

LEXUS MUTIARA DAMANSARA, No. 6, Jalan PJU 7/2, Mutiara Damansara, 47800 Petaling Jaya, Selangor Darul Ehsan. 03 - 7710 5655
LEXUS KUALA LUMPUR, Lot G-02, G-03 & G-03A, Ground Floor, Life Centre, 20 Jalan Sultan Ismail, 50250 Kuala Lumpur. 03 - 2164 5800
LEXUS SUNGAI BESI, No.314, Jalan Sungai Besi, 57100 Kuala Lumpur. 03 - 9222 2268
LEXUS PENANG, No. 26, Jalan Sultan Ahmad Shah, 10500 Pulau Pinang. 04 - 250 3888
LEXUS IPOH, No. 91, Jalan Tunku Abdul Rahman, (Jalan Kuala Kangsar), 30010, Ipoh, Perak. 05 - 506 6688
LEXUS JOHOR, No. 77, Jalan Geroda 1, Off Jalan Cenderawasih, Larkin, 80050 Johor Bahru, Johor Darul Takzim. 07 - 233 7777
LEXUS KUCHING, Lot 12648, Block 16 KCLD, Jalan Datuk Tawi Sli, 93250 Kuching, Sarawak. 082 - 466 199
LEXUS MELAKA, No. 2A, Jalan Autocity 6, Persiaran Autocity, 75450 Ayer Keroh, Melaka. 06 - 233 0088
Toll Free Line: **1-800-88-53987**. (Monday – Friday, 8.00am – 5.30pm) | **lexus.com.my**

